



Two Bedroom Apartment
Pearl Lane, Gillingham, Kent, ME7 1FU

£1,550 pcm
Leasehold



Pearl Lane, Gillingham, Kent, ME7 1FU

£1,550 pcm

Leasehold

Description

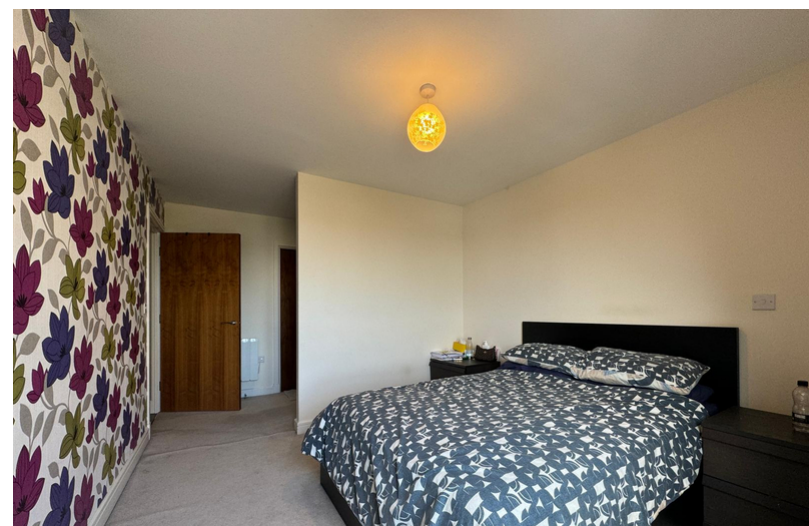
We're delighted to present this spacious and contemporary two-bedroom apartment located in the sought-after Boardwalk development on Pearl Lane, Gillingham. Situated on the second floor and offered furnished, this stylish home is available to move into immediately. The accommodation features a welcoming hallway leading to a bright open-plan lounge and kitchen area, two generous double bedrooms, including a main bedroom with en suite, and a modern family bathroom. The property also benefits from a private balcony off the lounge, offering partial river views. Residents have access to a communal Wi-Fi lounge, and the building is served by both stairs and a lift for convenience. Don't miss out on this fantastic rental opportunity — contact our team today to arrange a viewing!

Key Features

- Two Bedroom luxury apartment
- Furnished
- Available now
- Balcony with river views
- Gym on site
- Parking available
- Council Tax Band D - Medway Council
- EPC rating 85 B

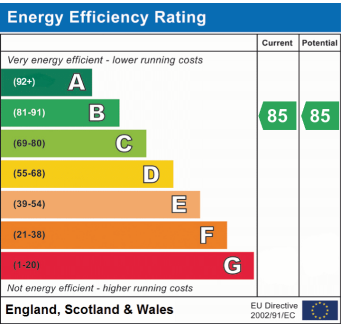
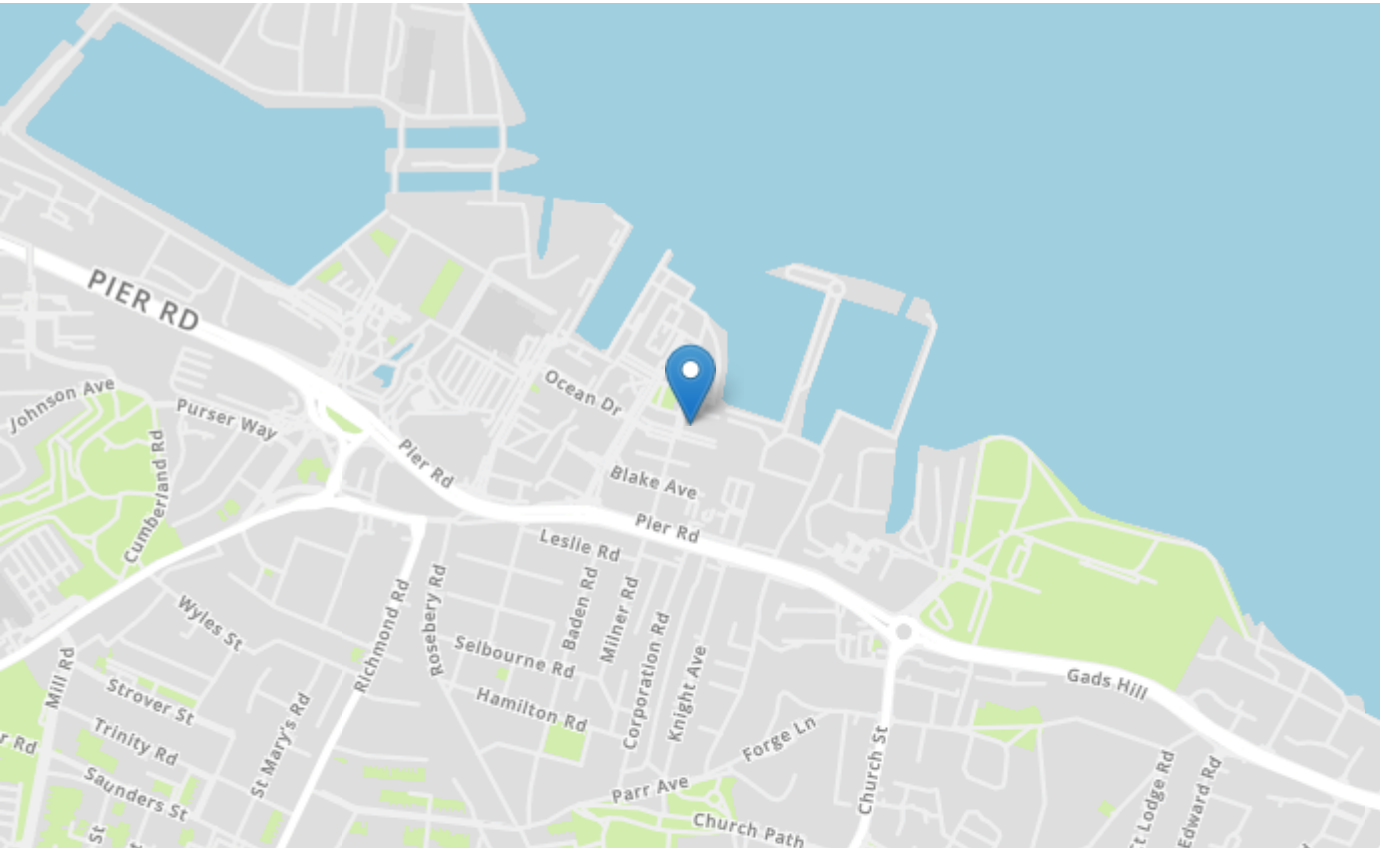
Local Area

Gillingham is a town in the unitary authority area of Medway in the ceremonial county of Kent, England. The town forms a conurbation with neighbouring towns Chatham, Rochester, Strood and Rainham. It is also the largest town in the borough of Medway. The town grew along the road from Brompton on the great lines (military barracks), to the railway station. As such it was a linear development. Close by was the road along the shore line, linking The Strand, and the tiny village of Gillingham Green. Later, communities developed along the top road - Watling Street – turnpike linking Chatham with Dover. All these communities merged into the town that is called today Gillingham.



Property Location

Pearl Lane, Gillingham, Kent, ME7 1FU



Tenure	Leasehold
Lease Term	N/A
Ground Rent	N/A
Service Charge	N/A
Local Authority	Medway Council
Council Tax	Band D

haus Estate Agents

26, London Road
Gillingham
Kent
ME8 6YX
Tel: 01634 848883 Email:
hello@hausestateagents.co.uk

Agent Notes
These particulars do not form part of an offer or contract and must not be relied upon as statements or representation of fact. The seller does not make or give nor do our employees or haus Estate Agents have authority to make or give any representation or warranty to the property. It should not be assumed that the property has all necessary planning, building regulation or other consents and we have not tested any services, equipment, or facilities. All photographs, measurements, floorplans and distances referred to are given as a guide only and should not be relied upon for the purchase of carpets or any other fixtures or fittings. References to tenure, service charges and ground rent (where applicable) as well as council tax are based on information supplied by the seller. The Buyer should verify all information themselves by inspection or otherwise prior to a legal commitment to purchase. The copyright of all details, photographs and floorplans remains exclusive to haus Estate Agents. If you require clarification or further information on any points, please contact us, especially if you are travelling some distance to view.