





Located in the desirable village of Lyminge, this three-bedroom end-of-terrace home offers a fantastic opportunity for families, first-time buyers, or investors. The ground floor features a spacious living room and a generous kitchen/dining area. Upstairs are three bedrooms, a family bathroom, and a separate WC. The property benefits from a front garden, driveway parking space with steps and path to the entrance, and gated side access. Fence enclosed rear garden, offering potential for outdoor enjoyment or future landscaping. Offered with no onward chain, this is a superb chance to secure a well-proportioned home in a desirable and well-connected village setting. Newly decorated and new flooring. EPC RATING = C



Guide Price £295,000

Tenure Freehold

Property Type End of Terrace House

Receptions 1

Bedrooms 3

Bathrooms 1

Parking Driveway

EPC Rating C

Council Tax Band C

Folkestone & Hythe District Council

Situation

This property is located in 'Greenbanks' a cul de sac in the village. Lyminge offers amenities including; Convenience Shop & Post Office, Doctors surgery, Hairdressers & Barbers, Chemist and sought after Primary School. The village offers various clubs and societies and there are good bus links to both Canterbury and Folkestone. Lyminge is a thriving community with lots of activities for all ages. In the nearby town of Folkestone there are mainline railway stations with High Speed service to London Stratford and St Pancras stations with an Approx. journey time of 53 minutes. Close to the M20 and Channel Tunnel.

The accommodation comprises

Ground floor

Entrance hall
16' 4" x 5' 11" (4.98m x 1.80m)

Living room
16' 8" x 10' 9" (5.08m x 3.28m)

Kitchen/Dining room
16' 4" x 10' 4" (4.98m x 3.15m)

First floor

Landing

Bedroom one
13' 5" x 9' 9" (4.09m x 2.97m)

Bedroom two
13' 10" x 7' 9" (4.22m x 2.36m)

Bedroom three
9' 2" x 6' 8" (2.79m x 2.03m)

Bathroom

WC

Outside

Driveway

Frontage and side access

Enclosed rear garden



Approximate Gross Internal Area = 87 sq m / 932 sq ft

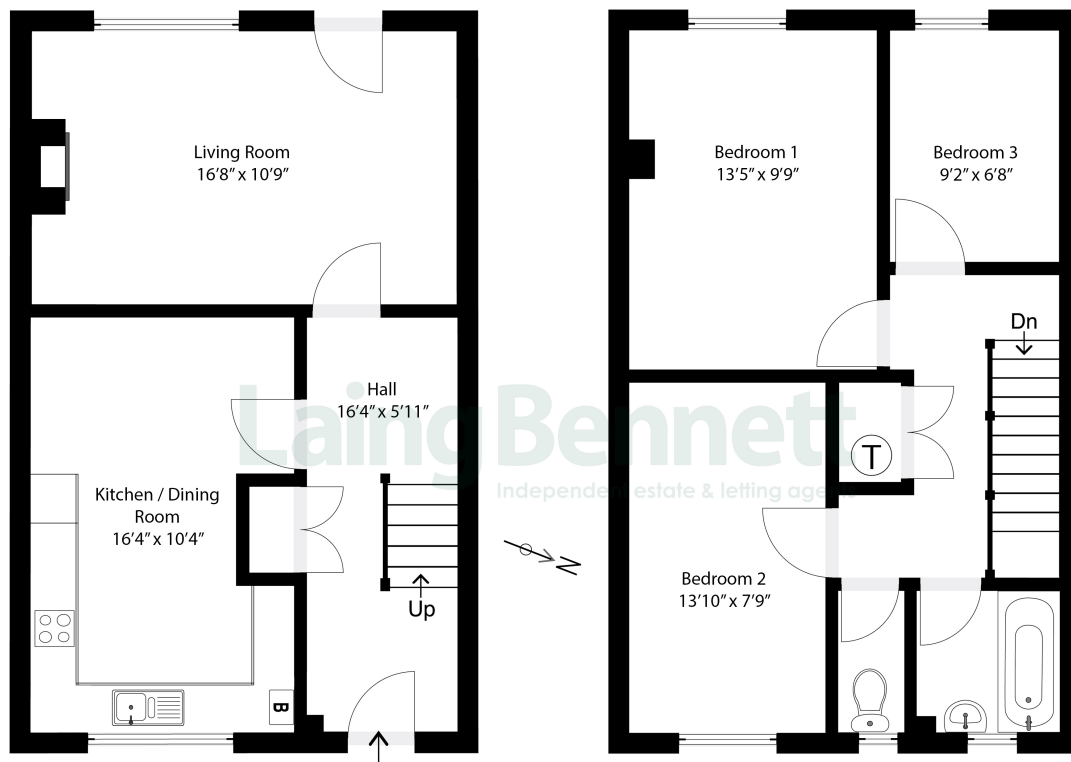


Illustration for Identification purposes only. Measurements are approximate. Dimensions given are between the widest points.
Not to scale. Outbuildings are not shown in actual location.
© Unauthorised reproduction prohibited - chriskemps@hotmail.com



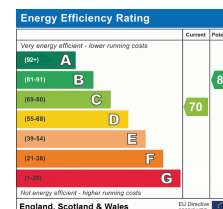
Need to book a viewing?

If you would like to book a viewing please contact our office on 01303 863393 or email sales@laingbennett.co.uk

See all our properties at



www.laingbennett.co.uk



The Estate Office
8 Station Road
Lyminge
Folkestone
Kent
CT18 8HP



These property details are intended to give a fair description and give guidance to prospective Purchaser/Tenant. They do not constitute an offer or contract of Sale/Tenancy and all measurements are approximate. While every care has been taken in the preparation of these details neither Laing Bennett Ltd nor the Vendor/ Landlord accept any liability for any statement contained herein. Laing Bennett Ltd has not tested any services, appliances, equipment or facilities, and nothing in these details should be deemed to be a statement that they are in good working order or that the property is in good structural condition or otherwise. We advise all applicants to commission the appropriate investigations before Exchange of Contracts/entering into a Tenancy Agreement. It should not be assumed that any contents/furnishing, furniture etc. photographed are included in the Sale/Tenancy, nor that the property remains as displayed in the photographs. No person in the employment of Laing Bennett Ltd has authority to make or give any representation or warranty whatever in relation to this property.