

FOR SALE



Marnham Court, Harrow Road, Wembley, Greater London HA0

Well-Located One-Bedroom Ground Floor Flat – Ideal for First-Time Buyers & Investors

A one-bedroom ground floor flat situated in a prime Wembley location, offering easy access to transport links, local amenities, and secured parking.

Positioned close to Sudbury Town Station (Piccadilly Line) and Wembley Central (Bakerloo Line), this property is ideal for commuters, first-time buyers, or buy-to-let investors.

£285,000 Leasehold

4 North Parade, Mollison Way, Edgware, HA8 5QH
E: info@mischaandco.com T: 0208 951 5000

Reception Room:

16'2" x 10'4" – Spacious with a bright front aspect, radiator and laminate flooring

Fitted Kitchen:

9'10" x 4'2" – leading of the reception featuring an electric cooker, extractor, fitted cupboards, sink drainer and plumbing for a washing machine

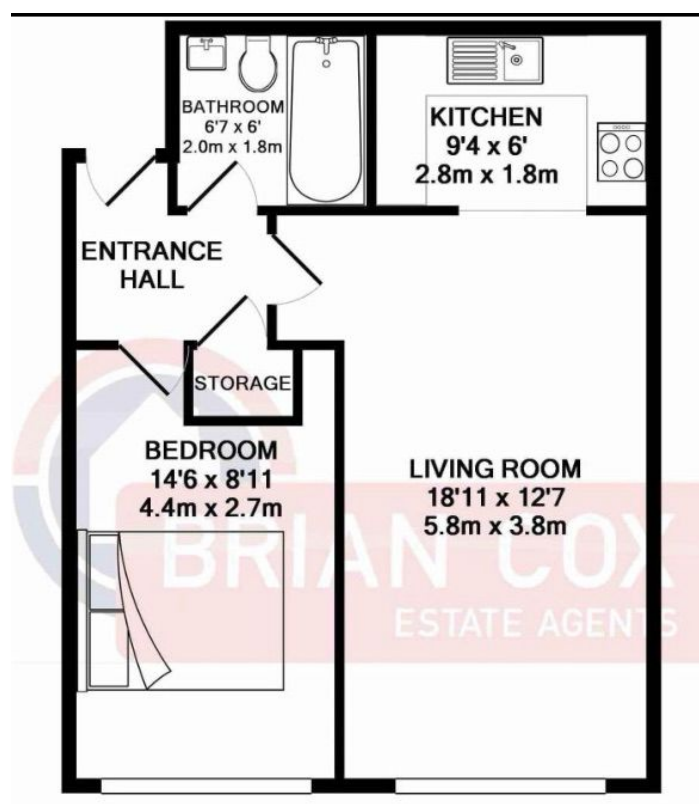
Main Bedroom:

11'11" x 6'0" – Includes built-in cupboards for storage

Bathroom:

6'6" x 5'7" – Three-piece suite, tiled floors, and part-tiled walls

Floorplan



NB: Please note that all fittings, kitchen appliances and heating systems have not been tested by Mishca & Co Sales & Lettings. Whilst we endeavour to make our sales details accurate and reliable. Room sizes should not be relied upon for carpets and furnishings. If there is any point, which is of particular important to you, please contact our office and we will be pleased to verify any information for you. Do so particularly if contemplating travelling some distance to view this property.