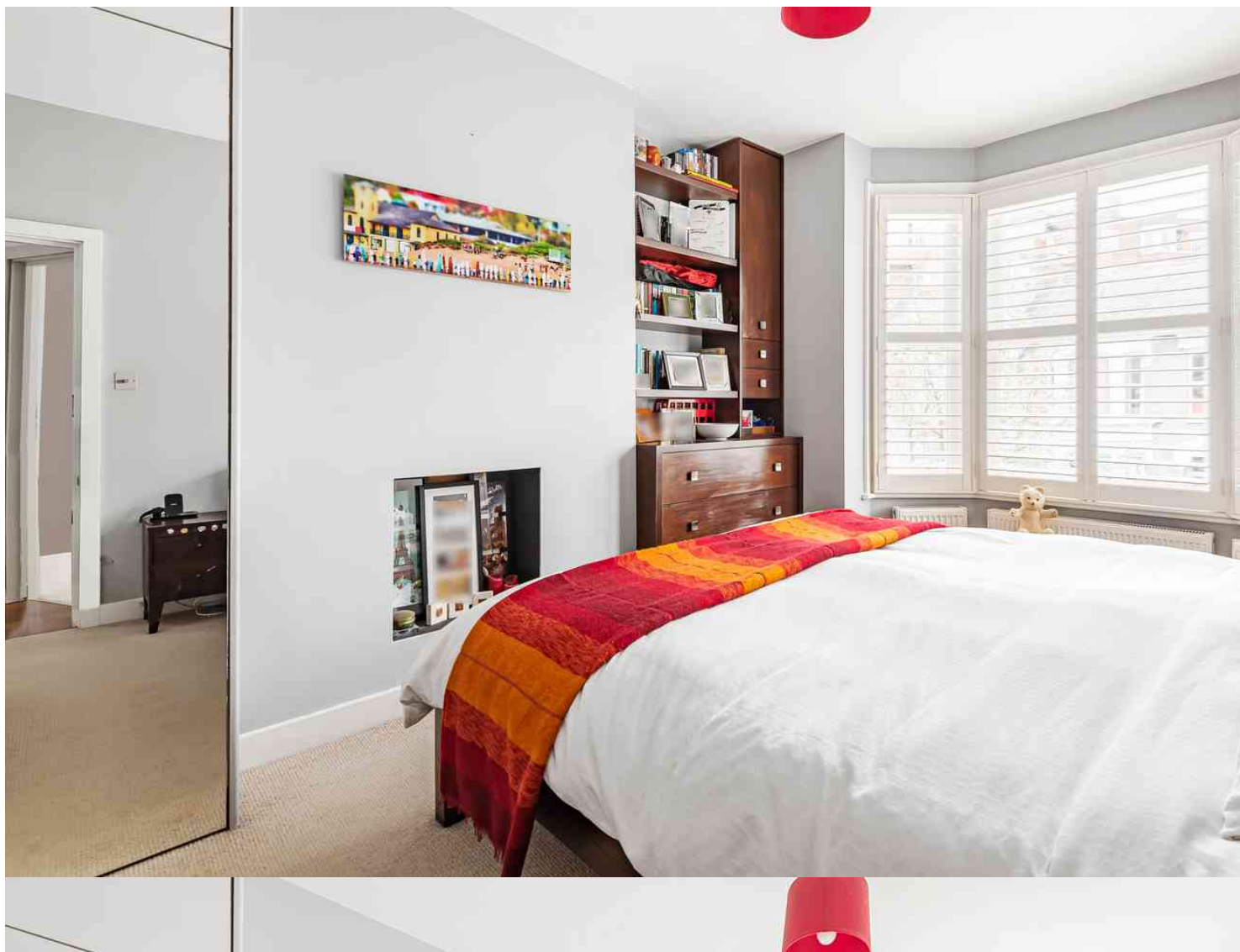




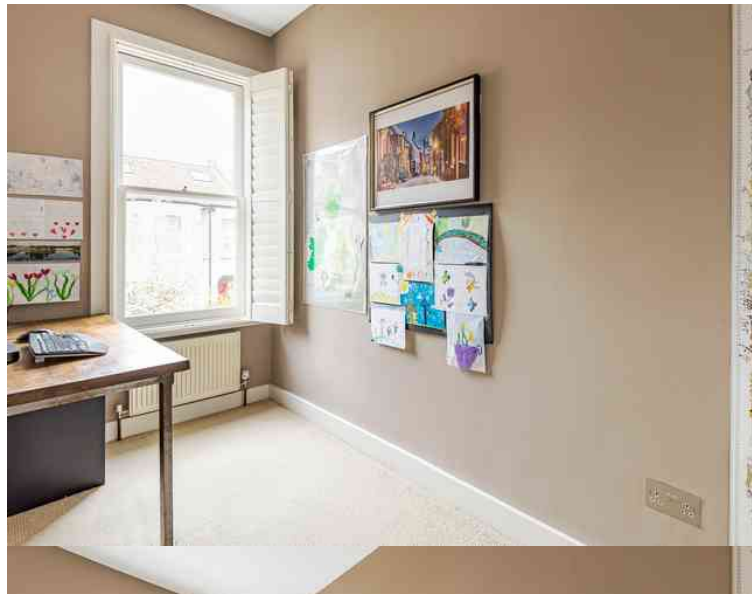
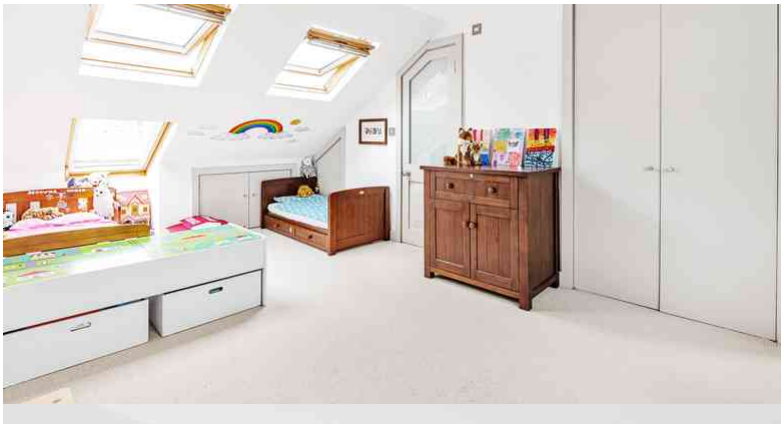
Keith Grove, London, W12 9EY

**Cow & Co**  
LONDON



GUIDE PRICE OF £550,000-700,000. A beautifully presented three bedroom split level period conversion with a lovely sunny roof terrace. The property is bright and spacious throughout, and offers excellent contemporary style fixtures and fittings.

Keith Grove is a quiet cul de sac located within walking distance of the range of cafe's, deli's and gastro pubs on the popular Askew Road as well as the open spaces of Ravenscourt and Cathnor Park. Shepherds Bush Market and Goldhawk Road stations (Circle and Hammersmith & City Lines) are within a ten minute walk of the house providing great transport links into the city.

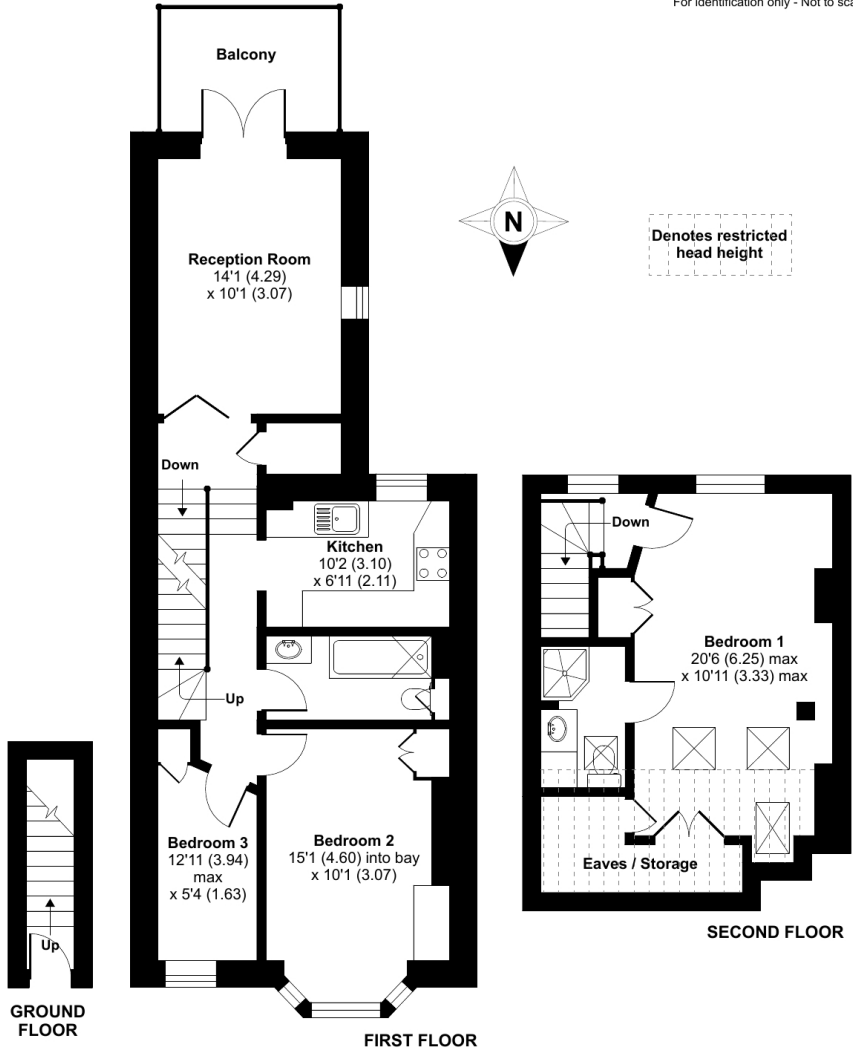


- Beautifully presented three bedroom split level period conversion
- Living area with ample space to dine and entertain leading out to a lovely roof terrace
- Three well proportioned bedrooms
- Well appointed family bathroom
- Top floor master bedroom suit with remodeled en-suite shower room
- Bright and spacious accommodation throughout
- Excellent fixtures and fittings
- Close proximity to local transport links and amenities

# Keith Grove, London, W12

Approximate Area = 898 sq ft / 83.4 sq m  
 Limited Use Area(s) = 95 sq ft / 8.8 sq m  
 Total = 993 sq ft / 92.2 sq m

For identification only - Not to scale



Floor plan produced in accordance with RICS Property Measurement Standards incorporating International Property Measurement Standards (IPMS2 Residential). © nchecon 2022. Produced for Cow & Co Properties Ltd. REF: 830241

Tel: 0208 065 0010  
 Email: thehub@cowandco-london.com  
 Web: cowandco-london.com

Agents note: All measurements are approximate and whilst every attempt has been made to ensure accuracy they are for general guidance only and must not be relied on. The fixture and fittings referred to have not been tested and therefore no guarantee can be given that they are in working order. Internal photographs are reproduced for general information and it must not be inferred that any item shown is included with the property.

# Cow & Co

LONDON