



One Bedroom Flat
Canterbury Street, Gillingham, Kent, ME7 5XN

£995 pcm
Freehold

Canterbury Street, Gillingham, Kent, ME7 5XN

£995 pcm

Freehold

Description

Situated on the popular Canterbury Street in Gillingham, this stylish one-bedroom first-floor apartment is offered fully furnished and ready to move into immediately. Ideal for a single professional or couple, the property has been thoughtfully maintained and includes the added benefit of an air conditioning unit, ensuring all-year-round comfort. The apartment features a bright and spacious living area, a modern fitted kitchen, a comfortable double bedroom, and a contemporary bathroom — all finished to a high standard with neutral décor throughout. Located within walking distance of Medway Hospital, this home is perfectly positioned for healthcare professionals or those needing convenient access to local shops, amenities, and excellent transport links. With vacant possession and no delay in moving in, this property presents a fantastic opportunity for anyone seeking a comfortable, fully equipped home in a desirable location. Don't miss your chance to secure this exceptional apartment. Contact our Lettings Team today to arrange your viewing and avoid disappointment.

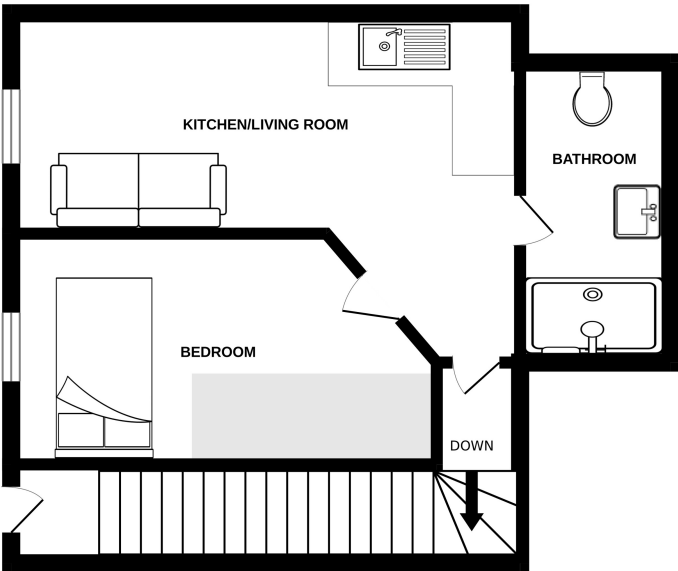
Key Features

- One bedroom first floor apartment
- Fully furnished and ready to move in immediately
- Ideal for a single professional or couple
- Bright and spacious living area with modern furnishings
- Comfortable double bedroom with neutral décor
- Includes air conditioning unit for year-round comfort
- Within walking distance of Medway Hospital
- Close to local shops, amenities, and excellent transport links

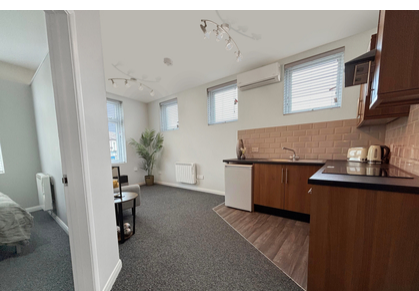
Local Area

Gillingham is a large town in the unitary authority area of Medway in the ceremonial county of Kent, England. The town forms a conurbation with neighbouring towns Chatham, Rochester, Strood and Rainham. It is also the largest town in the borough of Medway. The town grew along the road from Brompton on the great lines (military barracks), to the railway station. As such it was a linear development. Close by was the road along the shore line, linking The Strand, and the tiny village of Gillingham Green. Later, communities developed along the top road - Watling Street – turnpike linking Chatham with Dover. All these communities merged into the town that is called today Gillingham.

FIRST FLOOR

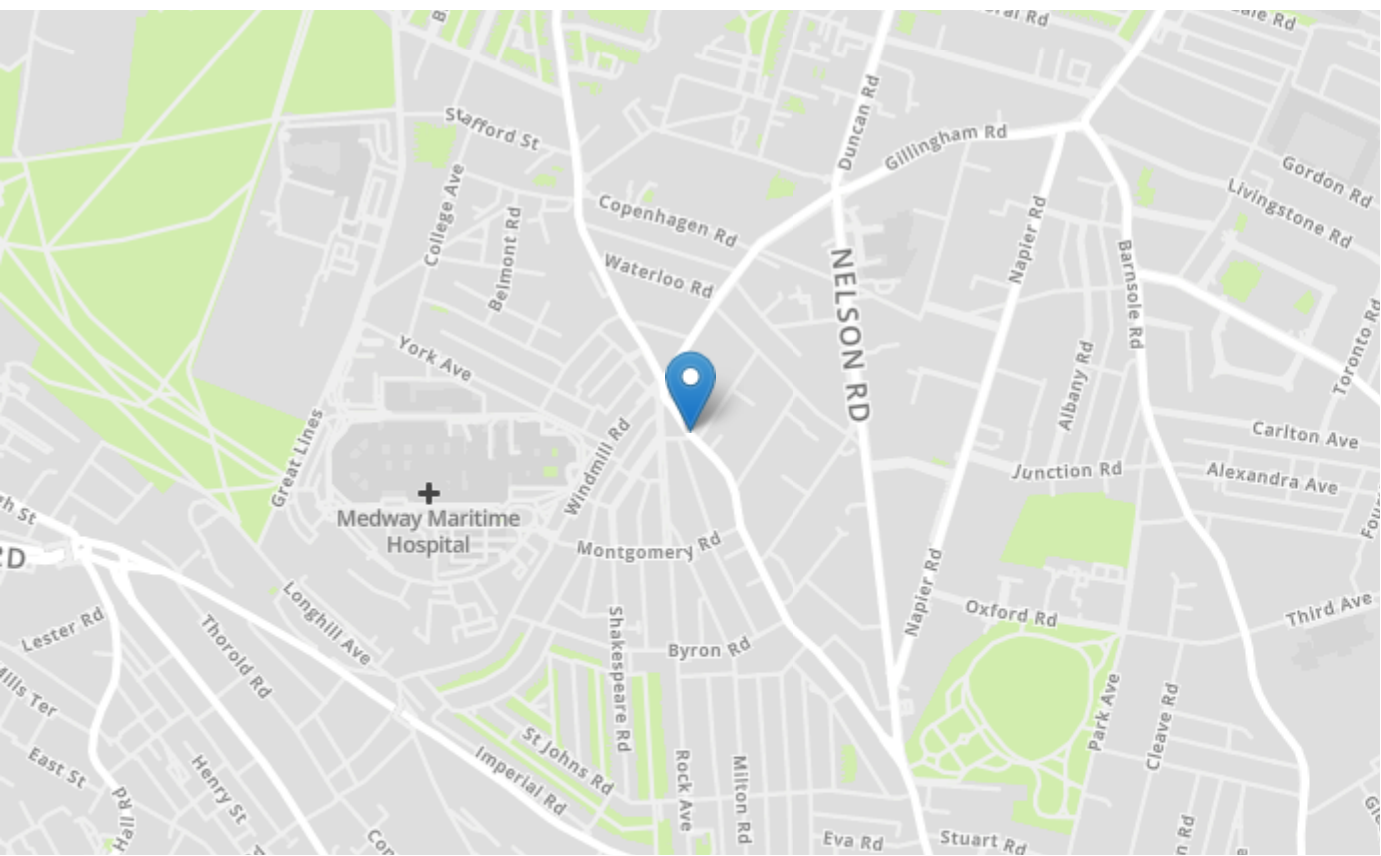


Whilst every attempt has been made to ensure the accuracy of the floorplan contained here, measurements of doors, windows, rooms and any other items are approximate and no responsibility is taken for any error, omission or mis-statement. This plan is for illustrative purposes only and should be used as such by any prospective purchaser. The services, systems and appliances shown have not been tested and no guarantee as to their operability or efficiency can be given.
Made with Metagix ©2025



Property Location

Canterbury Street, Gillingham, Kent, ME7 5XN



Energy Efficiency Rating		
	Current	Potential
Very energy efficient - lower running costs		
(92+) A		
(81-91) B		
(69-80) C		
(55-68) D	66	66
(39-54) E		
(21-38) F		
(1-20) G		
Not energy efficient - higher running costs		
England, Scotland & Wales	EU Directive 2002/91/EC	

Tenure	Freehold
Lease Term	Change this text
Ground Rent	Change this text
Service Charge	Change this text
Local Authority	Medway Council
Council Tax	Band A

haus Estate Agents

26, London Road
Gillingham
Kent
ME8 6YX
Tel: 01634 848883 Email:
hello@haustateagents.co.uk

Agent Notes
These particulars do not form part of an offer or contract and must not be relied upon as statements or representation of fact.
The seller does not make or give nor do our employees or haus Estate Agents have authority to make or give any representation or warranty to the property. It should not be assumed that the property has all necessary planning, building regulation or other consents and we have not tested any services, equipment, or facilities. All photographs, measurements, floorplans and distances referred to are given as a guide only and should not be relied upon for the purchase of carpets or any other fixtures or fittings. References to tenure, service charges and ground rent (where applicable) as well as council tax are based on information supplied by the seller. The Buyer should verify all information themselves by inspection or otherwise prior to a legal commitment to purchase. The copyright of all details, photographs and floorplans remains exclusive to haus Estate Agents. If you require clarification or further information on any points, please contact us, especially if you are travelling some distance to view.