



3 Inzievar Courtyard, Oakley, Dunfermline, Fife, KY12 8HB

Beautifully Presented, Characterful & Spacious, Two Bedroom, Upper Apartment

Up to date price and viewing info at mov8realestate.com/property

espc rightmove[®] find your happy Zoopla

Property Description

Beautifully presented, characterful and spacious, two bedroom upper apartment, of an exclusive development. Forming part of B listed stone built 'stables conversion' with an idyllic rural setting, near Dunfermline. Comprises an entrance hall, upper hall, living room, kitchen, two double bedrooms and a family bathroom.

Set within the grounds of the historic Inzievar House, with seven acres of woodland surrounding the property. Highlights include a quality fitted kitchen and stylish bathroom suite, real wood flooring and tasteful retention of period features.

In addition, there is electric central heating, sash and case windows, and good storage including access to two loft spaces. There is a shared courtyard and patio areas, a storage shed, a residential car park to the front, and extensive picturesque woodlands.

A welcoming entrance provides space for outerwear, a built-in storage cupboard and a charming spiral staircase leading up to the reception hall which offers views to the courtyard and affords access throughout the property.

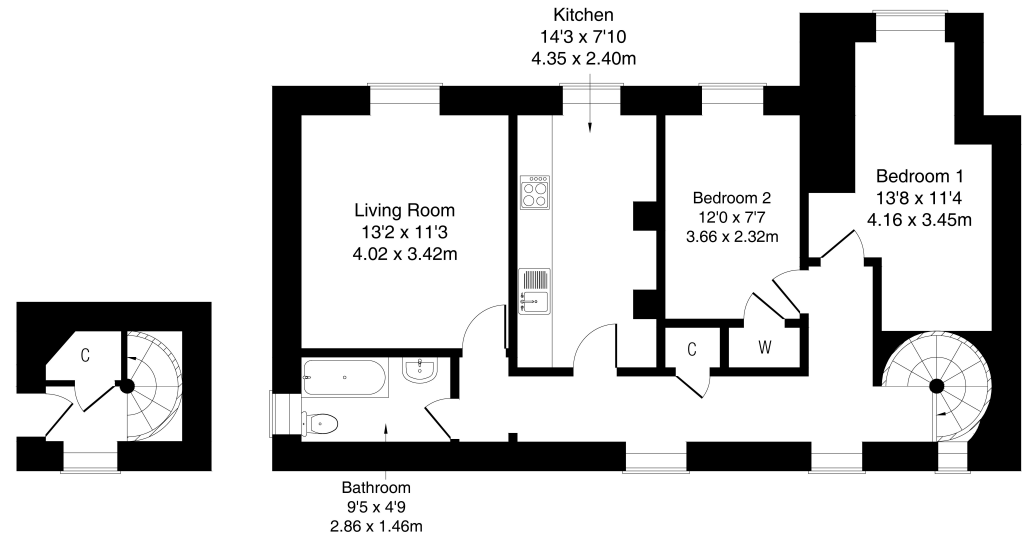
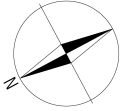
A tastefully-finished living room with real wood flooring, a traditional style fireplace, a central light fitting and a window seat, offers ample space for freestanding furniture. Set next to the living room, the modern kitchen features an exposed stone wall, press shelving and storage, and wood effect flooring. Fitted units include real wood worktops, a tiled surround and a stainless steel sink; whilst integrated appliances include an electric hob, oven, fridge/freezer, washing machine and dishwasher.

The two double bedrooms are similarly well-sized and finished with wood flooring for bedroom one, and carpeted flooring and a built-in wardrobe for bedroom two. Completing the accommodation, the bathroom is fitted with a stylish three-piece suite, a rainfall shower over the bath, tiled splash walls and a ladder-style radiator.



3 Inzievar Courtyard, Fife, KY12 8HB

Approximate Gross Internal Area: (786 sq ft - 73 sq m.)



Ground Floor

First Floor

Legal Disclaimer : Floor-plan and measurements are for illustrative guidance only, and not intended to form part of any contract.





Area Description

Inzievar Courtyard is located within Oakley, a small village community surrounded by open countryside, located five miles to the northwest of the large Fife town of Dunfermline. There is an abundance of amenities within the village including a health centre, chemist, post office, and a variety of shops for everyday necessities including a Co-op. Locally, there are two primary schools and a nursery, whilst further schooling is available in Dunfermline. There is a regular bus service into Dunfermline, where there is a large range of shops including an ASDA superstore, leisure and recreational facilities, Kingsgate Shopping Centre, Halbeath Retail Park, and an Odeon cinema complex. The village lies on the A907 which serves Alloa and Dunfermline, and leads to the M90, affording access to Perth to the north, and Edinburgh to the south. Whilst there are local railway networks close by with stations at Dunfermline, Rosyth and Inverkeithing connecting to all the major cities.







Our Services

-  Free pre-sale property valuations
-  Great value fixed estate agency fees
-  Extensive buyer matching database
-  Purchase and sale conveyancing

Contact Us

0345 646 0208

sales@mov8realestate.com

www.mov8.com

Head Office

6 Redheughs Rigg, Edinburgh, EH12 9DQ

Glasgow Office

77 Renfrew Street, Glasgow, G2 3BZ



Estate Agents and Solicitors



These particulars do not form part of any contract and the statements or plans contained herein are not warranted nor are they to scale. All descriptions, dimensions, areas, reference to condition and necessary permissions for use and occupation and other details are given in good faith, and are believed to be correct, but any prospective purchaser should not rely on them as statements or representations of fact, and any prospective purchaser must satisfy themselves by inspection or otherwise as to the correctness of each of them. The Seller shall not be bound to accept the highest or any offer nor to accept a full offer of the Fixed Price where this is applicable. Approximate measurements have been taken by sonic device and measurements are most often taken to the widest point of any room or space. Services and appliances have not been tested for efficiency or safety and no warranty is given as to their compliance with any Regulations. Offers should be made using the Combined Standard Clauses.