



NEWTON LODGE, GREENWICH, LONDON SE10 0BA

£1,500 PCM

A well presented two bedroom second floor flat, benefiting from naturally bright rooms throughout, further benefiting from superb modern kitchen and a charming location overlooking the lake and ecology park.

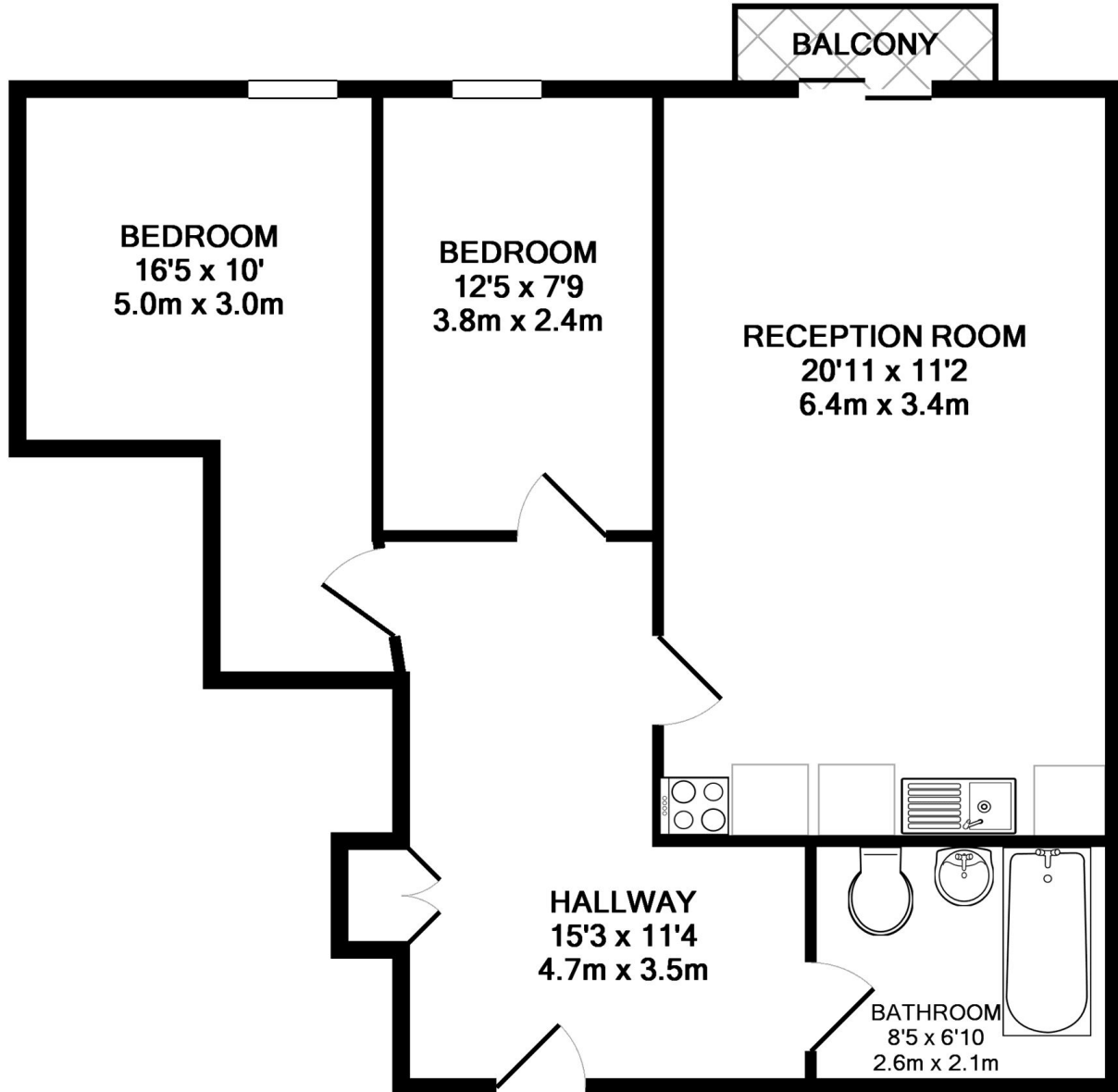
The development is located a short walk from North Greenwich tube station (Jubilee Line), the Emirates Cable Cars and the O2 with the many attractions within, including bars and restaurants. It is also within walking distance to Sainsburys, Aldi, Asda and Ikea. The development is also home to an excellent primary school, nursery and Eco park. Further benefits include secure parking, 24 hour concierge, excellent transport links and located moments from the O2 Arena.

Viewing by appointment with 1st avenue. Call: 020 8293 8600

18 NEWTON LODGE, GREENWICH, LONDON SE10 0BA

£1,500

PCM



TOTAL APPROX. FLOOR AREA 692 SQ.FT. (64.3 SQ.M.)

Whilst every attempt has been made to ensure the accuracy of the floor plan contained here, measurements of doors, windows, rooms and any other items are approximate and no responsibility is taken for any error, omission, or mis-statement. This plan is for illustrative purposes only and should be used as such by any prospective purchaser. The services, systems and appliances shown have not been tested and no guarantee as to their operability or efficiency can be given

Made with Metropix ©2016