



27 Saltwood Avenue, Kingsmead, Milton Keynes, Buckinghamshire, MK4 4AF

£300,000 Freehold

- Three bedroom
- Desirable new development of Kingsmead
- En Suite To Master
- Single Garage
- Off road Parking
- Downstairs Cloakroom
- Ideal investment
- EPC Rating C





GROUND FLOOR

Entrance Hall

Doors leading to:

Downstairs Cloakroom

Fitted to comprise two piece suite

Lounge Diner

4.99m x 5.28m (16' 4" x 17' 4")

Kitchen

2.56m x 2.84m (8' 5" x 9' 4")

FIRST FLOOR

Landing

Doors leading to:

Bedroom One

5.83m x 2.57m (19' 2" x 8' 5")

En Suite

Fitted to comprise three piece suite

Bedroom Two

3.24m x 2.63m (10' 8" x 8' 8")

Bedroom Three

3.29m x 1.79m (10' 10" x 5' 10")

Family Bathroom

Fitted to comprise three piece suite

EXTERIOR

Rear Garden

Single Garage

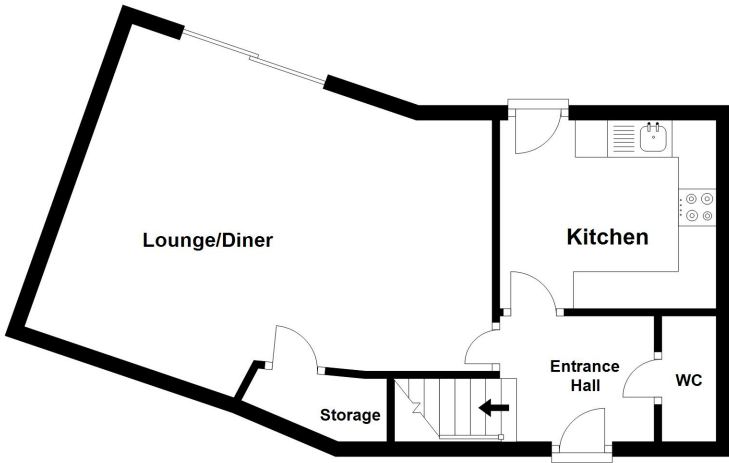
Off Road Parking

Space for one vehicle

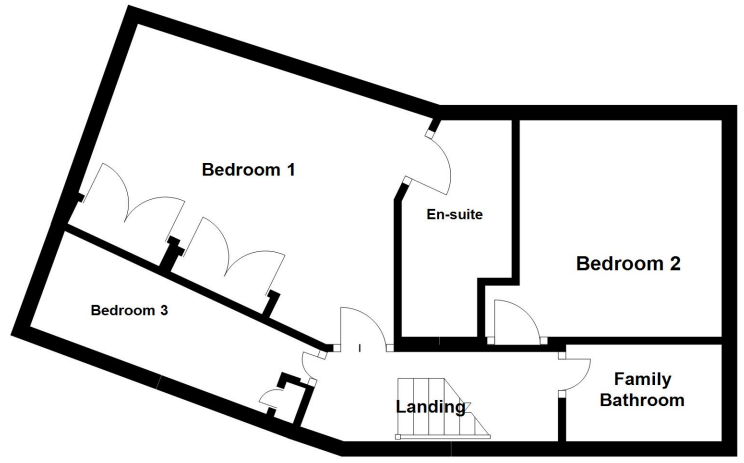
Disclaimer

Whilst we have endeavoured to prepare our sales particulars accurately none of the services, appliances or equipment have been tested. A buyer should satisfy themselves on such matters prior to purchase. Any measurements or distances mentioned in these particulars are for guide reference only. If such particulars are fundamental to a purchase, buyers should rely on their own enquiries. All enquiries should be directed to Elevation Estate Agents in the first instance.

Ground Floor



First Floor



Floor plans are for layout purposes only
Plan produced using PlanUp.

Energy Efficiency Rating		Environmental Impact (CO ₂) Rating	
	Current	Potential	
<i>Very energy efficient - lower running costs</i>			<i>Very environmentally friendly - lower CO₂ emissions</i>
(92 to 100) A			(92 to 100) A
(81 to 91) B		87	(81 to 91) B
(69 to 80) C	76		(69 to 80) C
(55 to 68) D			(55 to 68) D
(39 to 54) E			(39 to 54) E
(21 to 38) F			(21 to 38) F
(1 to 20) G			(1 to 20) G
<i>Not energy efficient - higher running costs</i>			<i>Not environmentally friendly - higher CO₂ emissions</i>
England, Wales & N.Ireland	EU Directive 2002/91/EC		England, Wales & N.Ireland
			EU Directive 2002/91/EC

>