

# FOR SALE

---

Bazalgette Court ,  
Hammersmith, W6

---

Flat  
Riverside

---

£750,000 lh

---

2  2  1 

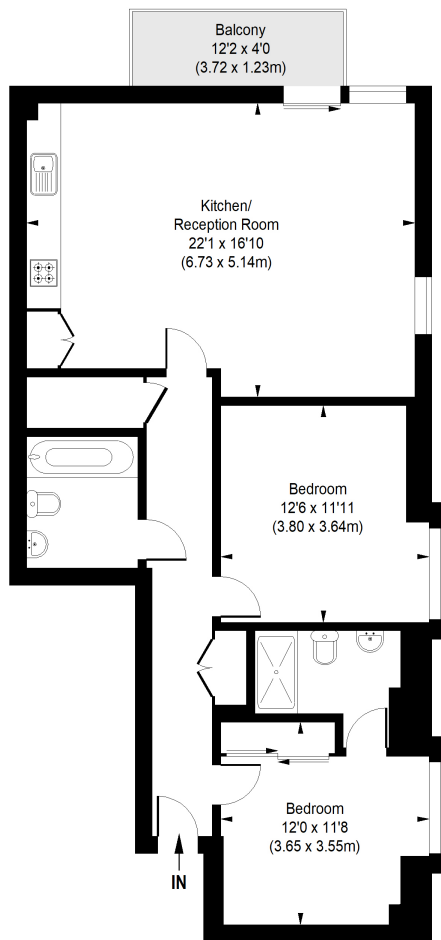


**horton  
andgarton**

SALES / LETTINGS / PROPERTY MANAGEMENT

hortonandgarton.co.uk | Sales 020 8819 0510 | Lettings 020 8819 0511  
172 King Street, Hammersmith, W6 0QU





SECOND FLOOR



**BAZALGETTE COURT,  
GREAT WEST ROAD, W6**  
APPROXIMATE GROSS INTERNAL AREA  
**881 Sq' / 81.84 SqM**



Not to scale, for guidance only and must not be relied upon as a statement of fact.  
All measurements and areas are approximate only



Second floor flat | Allocated off street parking | 881 Sq'  
- 81.84 SqM | EPC rating C | Two bedrooms - Two  
bathrooms | Riverside



hortonandgarton.co.uk  
Sales 020 8819 0510  
Lettings 020 8819 0511

172 King Street, Hammersmith, W6 0QU