



Three Bedroom Terraced House
Skinner Street, Gillingham, Kent, ME7 1JZ

Guide Price £220,000
Freehold

Skinner Street, Gillingham, Kent, ME7 1JZ

Guide Price £220,000

Freehold

Description

**** Guide Price £220,000 - £240,000 **** Fantastic first time buy or potential investment opportunity! Ideally situated in a prime central Gillingham location, just 0.5 miles from the mainline train station, 1 mile to Medway Hospital and with excellent motorway links, perfect for commuters. This charming Victorian mid-terrace home boasts a spacious open-plan lounge/diner, creating a welcoming and airy feel. Need extra storage? A handy dry cellar is accessible via a trap door from the lounge! The well-appointed kitchen comes with a separate utility area, and the stylish downstairs family bathroom features a modern vanity unit. Upstairs, you'll find three generously sized bedrooms, with the third accessed via the second, an ideal space for a nursery, home office, or even a spacious dressing room!

Outside, enjoy a sunny, west-facing paved garden low maintenance and complete with gated rear access.

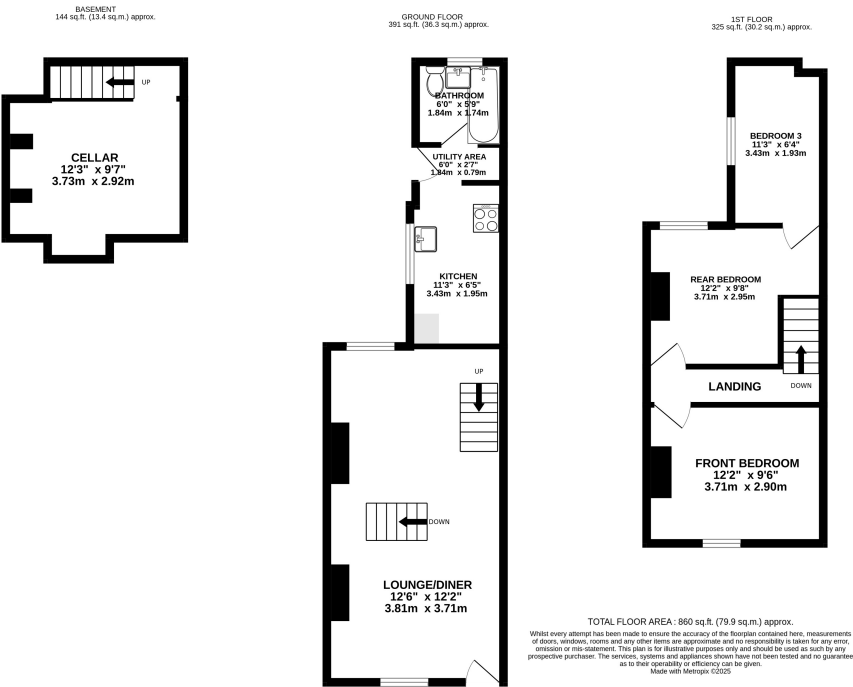
With no onward chain, this property is bound to attract attention. Don’t miss out call the Greyfox Sales Team in Rainham today to book your viewing!

Key Features

- Perfect First Time Purchase or Potential Investment Opportunity
- Three Bedrooms (Third Off The Second)
- Downstairs Family Bathroom
- Spacious Open Plan Lounge/Dining Area
- Popular Gillingham Town Centre Location & 0.5 Miles to The Train Station
- West Facing Low Maintenance Rear Garden Measuring approx 47 x 12ft
- Chain Free & Ready To Move Into
- Cellar / Storage Space
- West Facing Low Maintenance Rear Garden With Gated Access Measuring approx 47 x 12ft

Local Area

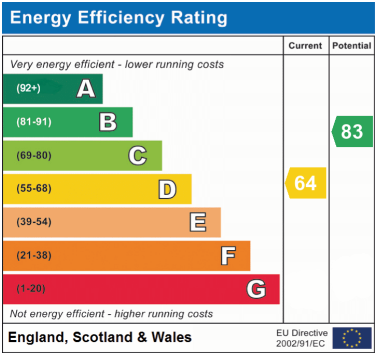
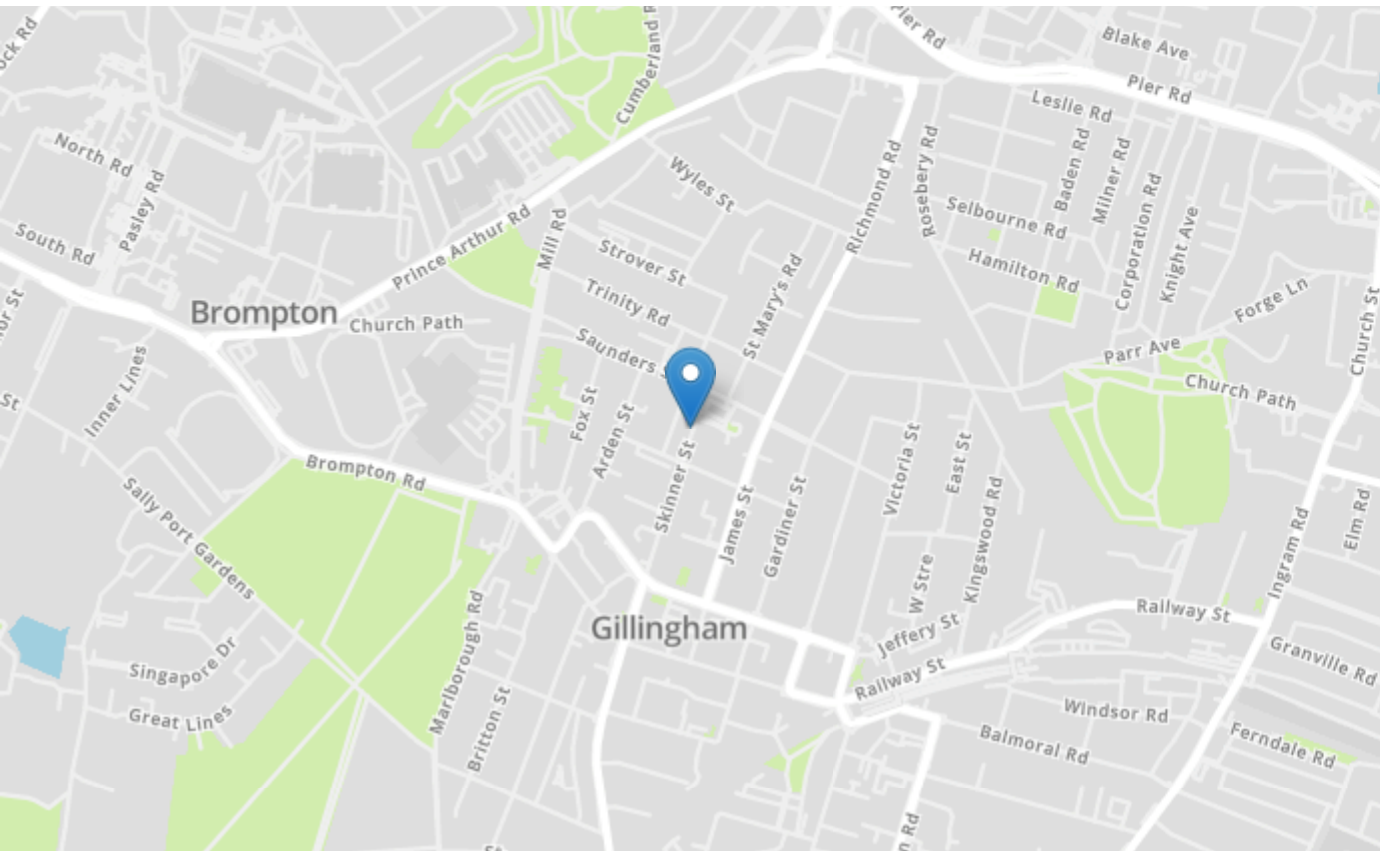
Gillingham is located within the Medway towns and offers railway links to central London and Ebbsfleet International and road connections to the A2/M2, M25 and M20. In addition to its town centre Gillingham offers a host of amenities including ice skating, country parks, an outdoor pool, a golf course, Medway Park Sports Centre and more.





Property Location

Skinner Street, Gillingham, Kent, ME7 1JZ



Tenure	Freehold
Lease Term	N/A
Ground Rent	N/A
Service Charge	N/A
Local Authority	Medway
Council Tax	Band B

Greyfox Walderslade
 Unit 2, Thetford House
 Walderslade Village Centre
 Walderslade Road
 Chatham
 Kent
 ME5 9LR
 Tel: 01634 672227 Email:
 walderslade@greyfox.co.uk

Greyfox Rainham
 67C High Street
 Rainham
 Kent
 ME8 7HS
 Tel: 01634 377737 Email:
 rainham@greyfox.co.uk

Agent Notes
 These particulars are prepared as a general guide to a broad description of the property and should not be relied upon as a statement or representation of fact and do not constitute part of an offer or contract. The seller does not make or give nor do our employees or Greyfox have authority to make or give any representation or warranty to the property. We have not carried out a structural survey and the services, appliances and specific fittings have not been tested. All photographs, measurements, floorplans and distances referred to are given as a guide only and should not be relied upon for the purchase of carpets or any other fixtures or fittings. Lease details, service charges and ground rent (where applicable) and council tax are given as a guide only and should be checked and confirmed by you on inspection and your solicitor prior to exchange of contracts. If there are any points of particular importance to you we will be pleased to check the information for you and to confirm that the property remains available. This is particularly important should you be travelling some distance to view and where statements have been made by us to the effect that the information has not been verified. The copyright of all details, photographs and floorplans remain exclusive to Greyfox. For details of our privacy policy and referral fee arrangements with any of our selected partner companies please visit <https://www.greyfox.co.uk/legal/privacy> and <https://www.greyfox.co.uk/referral-fees>.