

**SOLE
AGENT**

Apartment 8, Ringwood

St John's Road | St Peter Port | GY11WR

This recently re-decorated light and spacious top floor apartment is conveniently located close to Beau Sejour and Admiral Park amenities. Benefiting from allocated parking for one car and good on-street parking in the vicinity the apartment offers an entrance hall, lounge/diner, kitchen, master bedroom with wardrobes and units, single second bedroom and bathroom. Regret no pets, smokers or sharers. One older child considered. Available immediately.

£1,850 pcm

2 BEDROOMS

1 BATHROOM

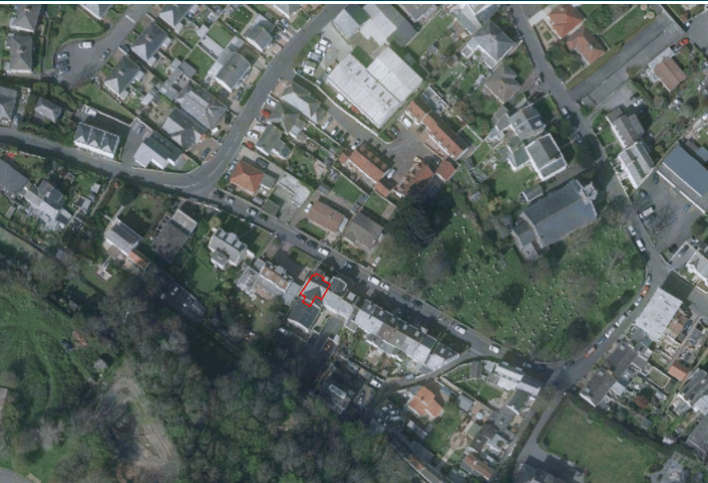
1 RECEPTION

PHOTOS





SPECIFICATIONS



Entrance Hall

4.18m x 1.16m (13' 9" x 3' 10")

Lounge/Diner

5.30m x 4.55m (17' 5" x 14' 11")

Kitchen/Diner

2.73m x 2.46m (8' 11" x 8' 1")

Bedroom

4.58m x 3.69m (15' 0" x 12' 1")

Bedroom 2

3.85m x 2.50m (12' 8" x 8' 2")

Bathroom

2.66m x 1.80m (8' 9" x 5' 11")

Parking

Allocated parking for one car.

PRICE INCLUDES

Curtains, carpets and light fittings

SPECIAL FEATURES

- Double glazed
- Top floor
- Light and spacious
- Good storage

SERVICES

Mains water, electricity and drainage. Gas central heating.

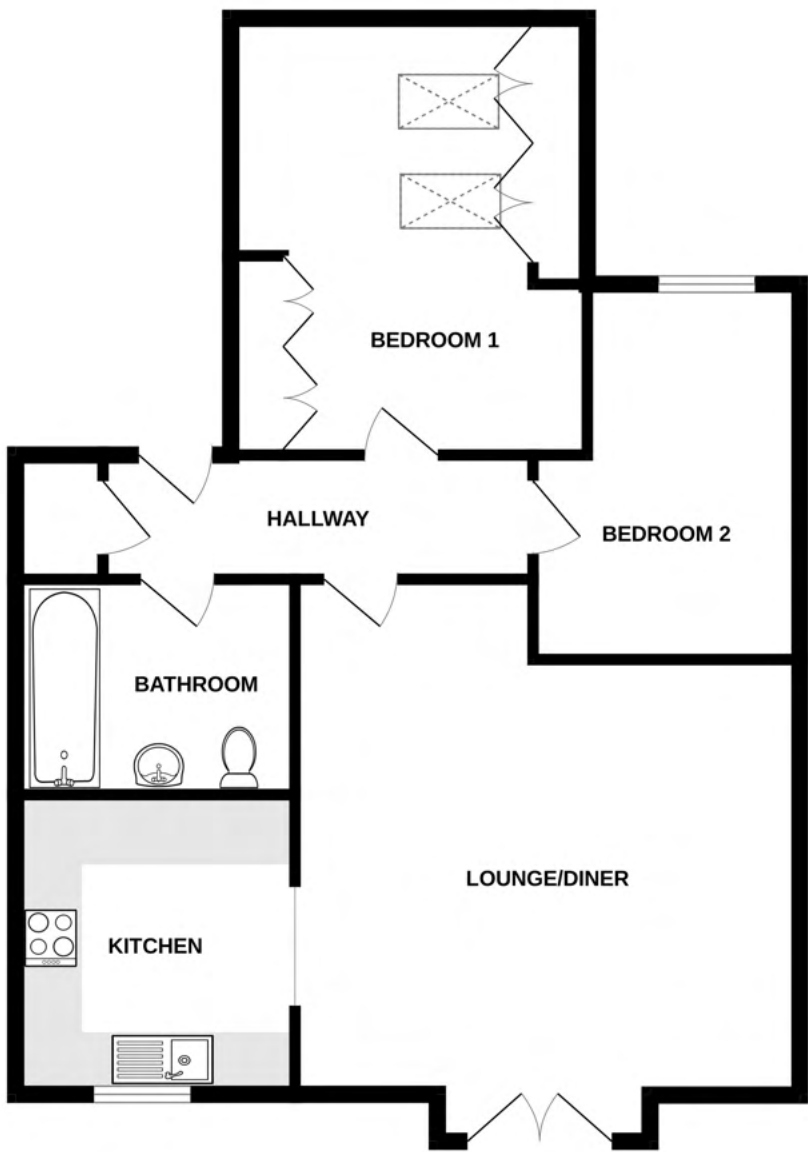
APPLIANCES INCLUDED

- Integrated Hotpoint fridge/freezer
- Indesit washer/dryer
- Electric double oven and ceramic hob

SCHOOL CATCHMENT

Amherst Primary School and Les Varendes High School

TOP FLOOR



8 RINGWOOD

Whilst every attempt has been made to ensure the accuracy of the floorplan contained here, measurements of doors, windows, rooms and any other items are approximate and no responsibility is taken for any error, omission or mis-statement. This plan is for illustrative purposes only and should be used as such by any prospective purchaser. The services, systems and appliances shown have not been tested and no guarantee as to their operability or efficiency can be given.
Made with Metropix ©2025