

Masefield Road

Warminster, BA12 8HN

COOPER
AND
TANNER



£265,000 Freehold

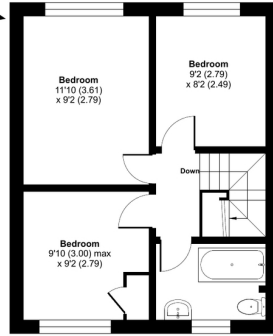
 3  1  1 EPC C

Description

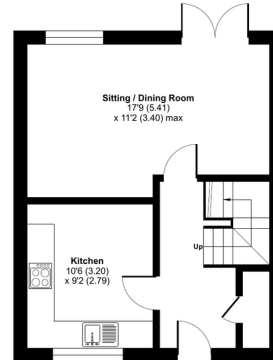
Cooper and Tanner are pleased to present this three bedroom mid terraced house which offers spacious accommodation throughout. The property also offers a large garden to the rear and NO ONWARD CHAIN. The accommodation comprises entrance hall, kitchen/dining room, downstairs cloakroom and separate living room. Upstairs, there is three bedrooms and a bathroom.

Masefield Road, Warminster, BA12

Approximate Area = 784 sq ft / 72.8 sq m
Outbuildings = 35 sq ft / 3.2 sq m
Total = 819 sq ft / 76 sq m
For identification only - Not to scale



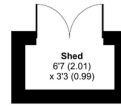
FIRST FLOOR



GROUND FLOOR



OUTBUILDING 2



OUTBUILDING 1

Floor plan produced in accordance with RICS Property Measurement 2nd Edition, incorporating International Property Measurement Standards (IPMS2 Residential). ©richcom 2024. Produced for Cooper and Tanner. REF: 1208186

Features

- Three bedrooms
- Large garden
- Separate lounge
- No onward chain
- Double glazed and gas central heating

Local Information

- Council Tax Band C
- Tenure Freehold
- EPC Rating C

WARMINSTER OFFICE

Telephone 01985 215579

48-50, Market Place, Warminster, Wiltshire BA12 9AN

warminster@cooperandtanner.co.uk

**COOPER
AND
TANNER**

Important Notice: These particulars are set out as a general outline only for the guidance of intended purchasers and do not constitute, nor constitute part of, an offer or contract. All descriptions, dimensions, reference to condition and necessary permissions for use and occupation, warranties and other details are given without responsibility and any intending purchasers should not rely on the m as statements or representations of fact but must satisfy themselves by inspection or otherwise as to the correctness of each of them.

