



Springfield Court, Eton Avenue, Belsize Park, NW3

£2,850
pcm



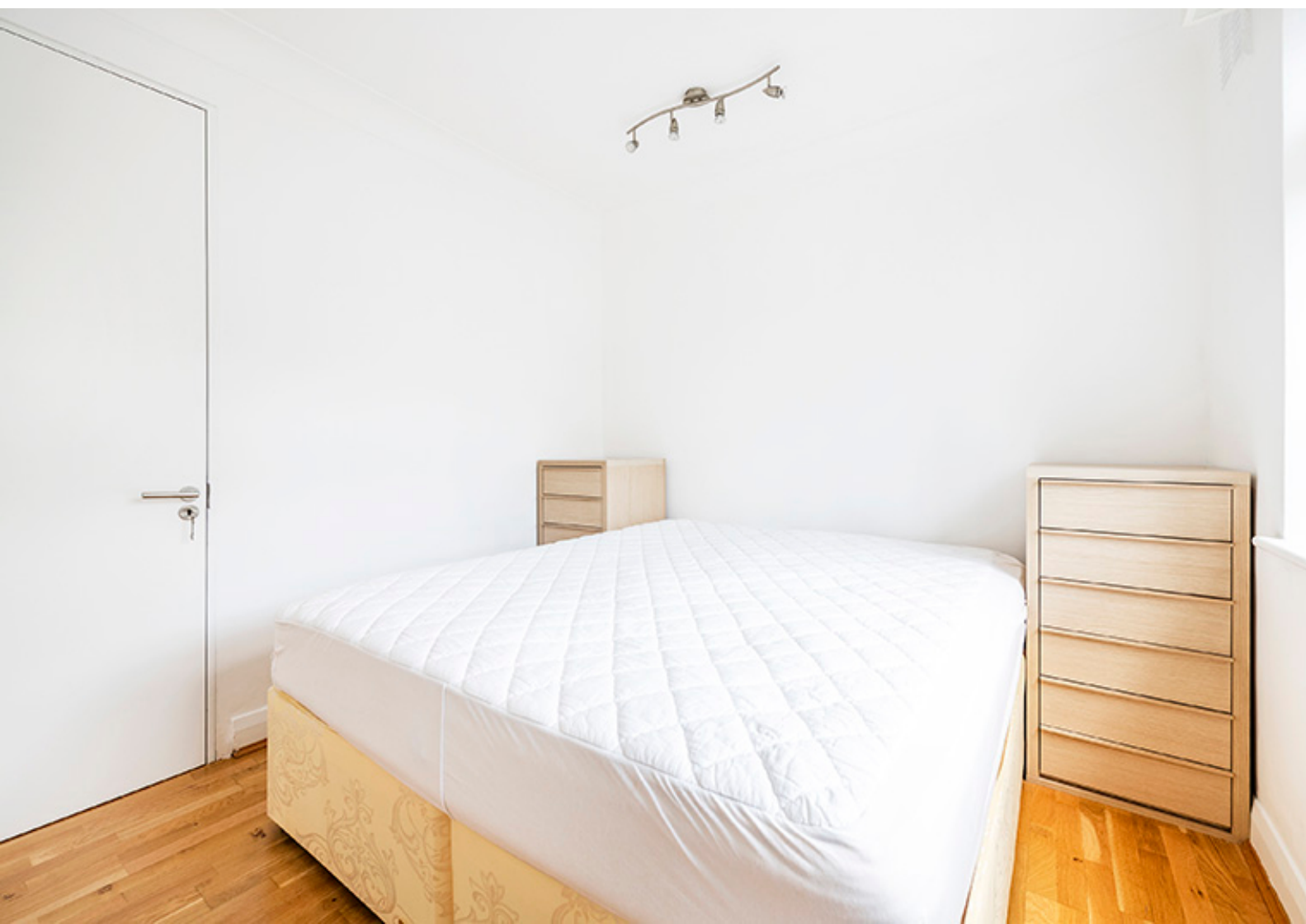
Springfield Court, Eton Avenue, Belsize Park, NW3

A perfectly located and recently refurbished two double bedroom ground floor apartment offering 685 Sq Ft (63 Sq M) of internal space. This generously proportioned flat benefits from a spacious reception room, modern fully fitted kitchen and contemporary bathroom. A garage can also be rented by separate negotiation.

Eton Avenue is located equal distance to both Swiss Cottage Underground station (Jubilee Line) and Belsize Park Underground station (Northern Line). Local amenities, restaurants and coffee shops can be found on both England's Lane and Belsize Village.


Features

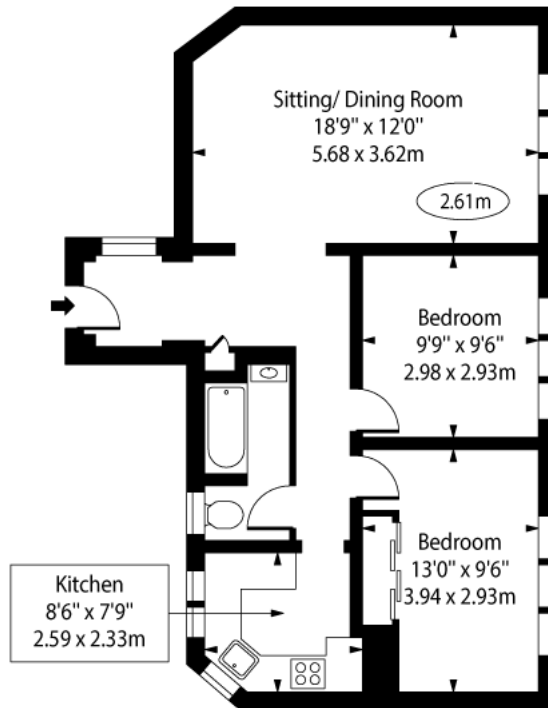
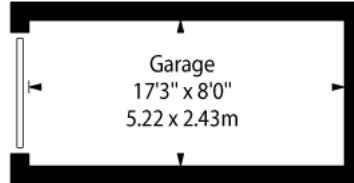
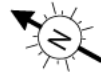
- Two Double Bedrooms
- Ground Floor Apartment
- Offering 685 Sq Ft (63 Sq M) Of Internal Space
- Perfectly Located
- Recently Refurbished
- Modern Kitchen
- Contemporary Bathroom
- Available Now
- Offered Furnished
- Option To Rent Garage



Springfield Court,
Eton Avenue, Belsize
Park, NW3

Springfield Court,
Eton Avenue, NW3

 - Ceiling Height



Ground Floor

Approx Gross Internal Area 685 Sq Ft - 63.63 Sq M

(Excluding Garage)

Approx Floor Area Including Garage 819 Sq Ft - 76.11 Sq M

For Illustration Purposes Only - Not To Scale Floor Plan by www.nogaphotostudio.com Ref: No.50344

This floor plan should be used as a general outline for guidance only. Any intending purchaser or lessee should satisfy themselves by inspection, searches, enquiries and full survey as to the correctness of each statement. Any areas, measurements or distances quoted are approximate and should not be used to value a property or be the basis of any sale or let.