

Chapel Barton

High Littleton, Bristol, BS39 6HS

COOPER
AND
TANNER



£315,000 Freehold

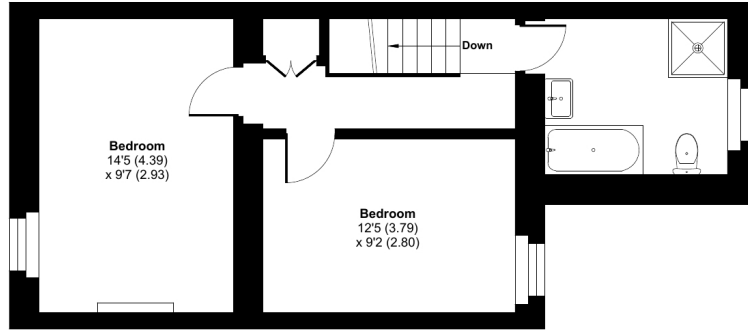
🛏️ 2 🛋️ 2 🚿 1 EPC D

Description

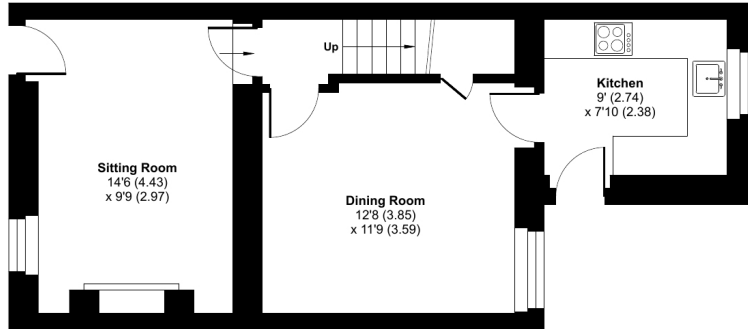
A beautifully presented two bedroom mid terrace stone cottage, located in a quiet backwater with enclosed gardens and an additional piece of land which could be used as parking. In brief the accommodation comprises a sitting room with feature fireplace housing a wood burning stove, a second reception room and a kitchen with a range of fitted units and wooden worktops over. A door from here leads to the garden. To the first floor there are two double bedrooms and a spacious family bathroom with separate shower cubicle.

Chapel Barton, High Littleton, Bristol, BS39

Approximate Area = 868 sq ft / 80.6 sq m
For identification only - Not to scale



FIRST FLOOR



GROUND FLOOR

Floor plan produced in accordance with RICS Property Measurement 2nd Edition, incorporating International Property Measurement Standards (IPMS2 Residential). © nichcom 2025. Produced for Cooper and Tanner. REF: 1257650



Features

- Charming stone cottage
- Quiet tucked away location
- Period and charm throughout
- Pretty enclosed garden to the rear
- Two reception rooms
- Beautifully presented
- Kitchen
- Two double bedrooms
- Family bathroom
- Additional piece of land suitable for parking

Local Information

- Council Tax Band C
- Tenure Freehold
- EPC Rating D

MIDSOMER NORTON OFFICE

Telephone 01761 411010

14, High Street, Somerset BA3 2HP

midsomernorton@cooperandtanner.co.uk

COOPER
AND
TANNER

Important Notice: These particulars are set out as a general outline only for the guidance of intended purchasers and do not constitute, nor constitute part of, an offer or contract. All descriptions, dimensions, reference to condition and necessary permissions for use and occupation, warranties and other details are given without responsibility and any intending purchasers should not rely on the m as statements or representations of fact but must satisfy themselves by inspection or otherwise as to the correctness of each of them.

