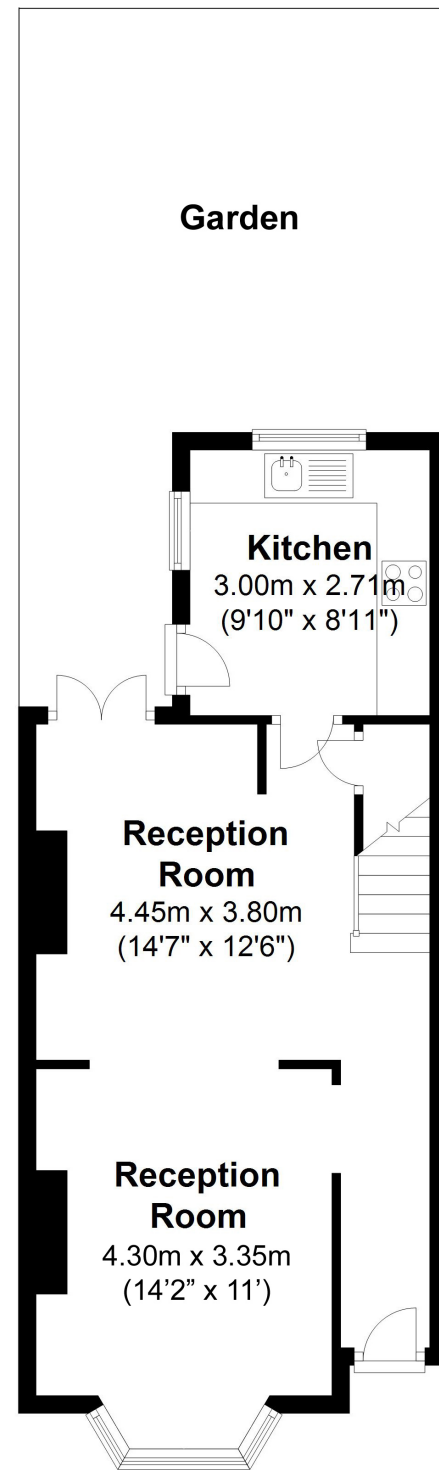


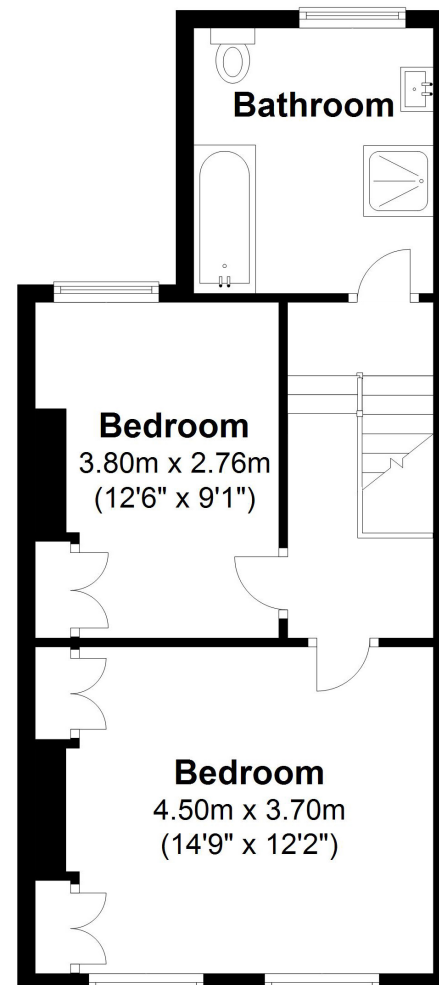
Ground Floor

Approx. 42.6 sq. metres (458.5 sq. feet)



First Floor

Approx. 42.6 sq. metres (458.9 sq. feet)



Total area: approx. 85.2 sq. metres (917.4 sq. feet)
For illustration purposes only - not to scale



2 BEDROOM HOUSE

Northfield Road, W13

£685,000

Tucked away, on a one way street within the heart of Northfields, sits this well presented two bedroom Victorian home with a south facing garden.

With two reception rooms and a modern kitchen it's the perfect family home.

FEATURES

- Period Cottage
- Two Bedrooms
- South Facing Garden
- Fielding Primary School Catchment
- Period Features
- Convenient for Piccadilly and Central Lines

2 BEDROOM HOUSE

Northfield Road, W13

£685,000

This charming Victorian property epitomises homes typical in popular Northfields.

Inside, the living room is to the left. With warm wooden flooring, angled bay and high ceilings the room feels bright and spacious, whilst still retaining a period feel with an original fireplace. The wall separating the dining room has been removed to create a more open feel suitable for entertaining, offering direct access to the garden.

Through the dining room is the kitchen which is arranged in a 'L' shape so each appliance is easily to hand and work space is maximised. The door leads out onto the sunny south facing garden which gets the best of the sun all day.

Inside and upstairs on the first floor, you'll find the master bedroom to the front overlooking the quiet street below. It's gracious in proportion spanning the entire width of the house. Next door is the second double bedroom with a built in wardrobe. The family bathroom is generous in size having a classic white suite including roll top bath and separate walk in shower.

There is further opportunity to extend to create a third bedroom subject to the necessary planning consents being granted.

