

A superior characterful 3-4 bed detached residence with 2 bed annexe. Set in most wonderful landscaped gardens and grounds. Felinfach. Mid Way Aberaeron/Lampeter.



Aeron Villa, Felinfach, Lampeter, Ceredigion. SA48 8AE.

£550,000

Ref R/4099/ID

****Most charming 3-4 bed detached residence with detached 2 bed annex**Set in outstanding landscaped gardens and grounds**Located in the popular village of Felinfach being equi-distance to both Aberaeron and Lampeter**Perfect home with an income/multi generational living**Full of charm and character**Former tennis court**Garage/Workshop and a range of outbuildings**A REAL COUNTRY JEM! ****

The property comprises of Ent Hall, Dining Room, Front Lounge, Rear Lobby, Kitchen/Breakfast Room, Rear Lounge, Sun Room. First Floor - 3 Double Bedrooms, 1 Box Room and main Bathroom. The Annex provides - Ent Hall, Lounge, Kitchen/Dining Room, Utility Room, 2 Double Bedrooms and a bathroom.

Located within the popular and busy Aeron Valley village community of Felinfach which offers a good range of local amenities including shop, supermarket, post office, filling station, (new primary school soon to be opened), public house, places of worship. Also having good public transport connectivity. The Georgian harbour town of Aberaeron is some 7 miles distance from the Georgian harbour town of Aberaeron on the Cardigan bay coast which offers a comprehensive range of shopping and schooling facilities and within some 6 miles of the University town of Lampeter. Within an easy reach of the larger Marketing and



LAMPETER
12, Harford Square, Lampeter,
Ceredigion, SA48 7DT
Tel:01570 423623
lampeter@morgananddavies.co.uk



ABERAERON
4, Market Street, Aberaeron,
Ceredigion, SA46 0AS
Tel:01545 571 600
aberaeron@morgananddavies.co.uk



CARMARTHEN
11, Lammas St, Carmarthen,
Carmarthenshire, SA31 3AD
Tel:01267 493444
carmarthen@morgananddavies.co.uk

GENERAL

The placing of AERON VILLA on the market provides prospective purchasers the opportunity to acquire a well loved family home which offers a 3-4 bed detached residence full of character and charm built of stone construction under a slated roof and also offers a 2 bed detached annex which would be perfect for multi generational living/home with an income.

One of the main features of the property is its mature, landscaped garden and grounds which the vendors have spent considerable resources in creating.

The accommodation provides viz :

GROUND FLOOR

Entrance Hall



7' 3" x 7' 6" (2.21m x 2.29m) via glazed hardwood door with glazed fanlight above, central heating radiator, stairs to first floor.

Dining Room

11' 0" x 15' 0" (3.35m x 4.57m) with large double glazed window to front, central heating radiator, coved ceilings, electric fireplace on a raised hearth.



Front Lounge

14' 10" x 14' 6" (4.52m x 4.42m) with sandstone fireplace with raised marble hearth, double glazed window to front, central heating radiator, alcove cupboards, shelved picture rail, TV point.





Rear Lobby

7' 8" x 8' 0" (2.34m x 2.44m) with understairs storage cupboard. Door into -

Kitchen/Breakfast Room

10' 8" x 8' 0" (3.25m x 2.44m) with range of fitted base and wall cupboard units with Formica working surfaces above, breakfast bar, Indesit eye level electric oven and grill, 4 ring ceramic hob with extractor fan, inset 1½ stainless steel drainer sink, dual aspect window to rear and side, exposed ceiling beams, tiled floor, tiled splash back, central heating radiator. Glazed door into the dining room



Rear Lounge

10' 6" x 17' 2" (3.20m x 5.23m) with brick fireplace with a raised hearth with alcoves, wall lights, dual aspect windows to rear and side with lovely views over the garden, TV point, central heating radiator.



Rear Sun Room/Conservatory

8' 8" x 9' 5" (2.64m x 2.87m) with dwarf walls and double glazed windows to rear making the most of the garden views, central heating radiator, half glazed exterior door.





FIRST FLOOR

Split Landing

18' 4" x 6' 6" (5.59m x 1.98m) via stairs from ground floor, double glazed window to rear, access hatch to Loft.



Main Bathroom

11' 3" x 8' 2" (3.43m x 2.49m) a 4 piece white suite comprising of a panelled bath with mixer tap and shower head above, enclosed shower unit with Triton electric shower, low level flush w.c. vanity unit with inset wash hand basin,

central heating radiator, engineered oak flooring. Door into airing cupboard housing a hot water tank, tiled walls.



Rear Bedroom 1

11' 2" x 8' 3" (3.40m x 2.51m) with dual aspect window to rear and side, central heating radiator.

Front Master Bedroom 2



12' 4" x 14' 6" (3.76m x 4.42m) with double glazed window to front, range of fitted cupboard units, central heating radiator, picture rail.

Front Double Bedroom 3

14' 7" x 12' 0" (4.45m x 3.66m) with window to front, central heating radiator.



Front Box Room/Single Bedroom

8' 2" x 6' 0" (2.49m x 1.83m) with double glazed window to front, central heating radiator. (Would make a perfect office).

Y BWTHYN (The Annex)

To the Front



Entrance Hall

15' 2" x 6' 3" (4.62m x 1.91m) Accessed via glazed exterior door, dog leg open tread staircase to first floor, central

heating radiator.

Lounge



13' 3" x 15' 4" (4.04m x 4.67m) with dual aspect windows to front and side, open fireplace with reconstructed stone surround, 2 central heating radiators, TV point.

Kitchen/Dining Room

15' 8" x 9' 0" (4.78m x 2.74m) with a range of fitted base and wall cupboard units with double stainless steel drainer sink, electric oven and hob, central heating radiator, double glazed window to front.



Utility Room

13' 7" x 4' 5" (4.14m x 1.35m) with stable door to front, Worcester oil fired boiler.

FIRST FLOOR

Landing

8' 7" x 6' 2" (2.62m x 1.88m)

Double Bedroom 1



10' 0" x 13' 3" (3.05m x 4.04m) into dormer window to front with views over the garden, central heating radiator, dual wall lights, storage cupboards.

Bathroom



7' 4" x 5' 9" (2.24m x 1.75m) a white suite comprising of a panelled bath with hot and cold taps, pedestal wash hand basin, low level flush w.c. window to front, tiled walls. Door into airing cupboard.

Double Bedroom 2



13' 0" x 13' 3" (3.96m x 4.04m) with dormer window to front, central heating radiator. Storage cupboard.

EXTERNALLY

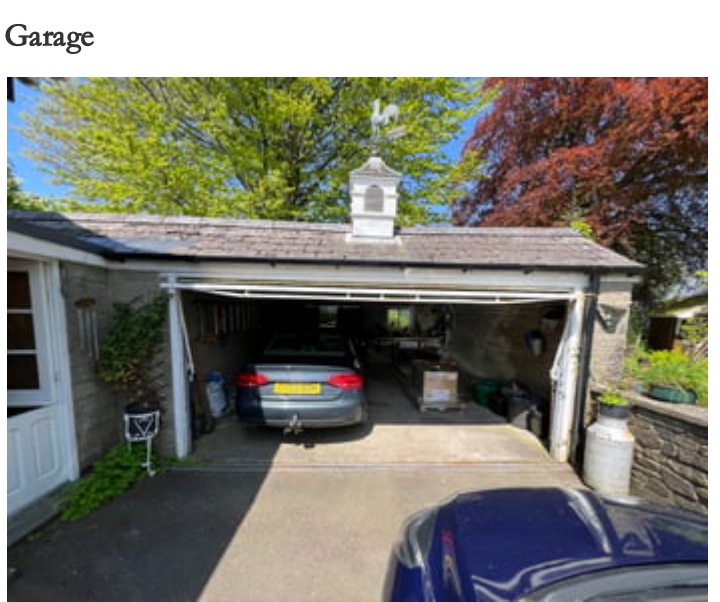
The Grounds

The current vendors has paid careful attention in creating a most amazing landscaped garden which begins from the side driveway with a gated entrance to the road with side tarmac drive leading to rear parking and turning space for several cars being half paved and half tarmac. Beyond this is a spacious lawned area with many mature shrubs, flowers and hedgerows to the boundaries with stone walls.

There is also 3 mature copper beech trees on the grounds which provides lovely shaded areas.

Driveway leading to -





Garage

19' 3" x 17' 1" (5.87m x 5.21m) with up and over door, double doors to rear, work benches, power connected.





Summer House



10' 0" x 9' 4" (3.05m x 2.84m) being of insulated timber construction with double glazed patio doors to front.



Further lawned area again with a range of colourful flower and shrubbery areas.

Former Tennis Court



Which offers a full sized court being tarmaced, this court is in need of re-surfacing.

Log Store

7' 3" x 13' 2" (2.21m x 4.01m) Side covered area. With side



access to front.

Outside w.c.

Workshop



34' 0" x 30' 2" (10.36m x 9.19m) a large block built workshop with power connected, range of work benches, windows to front.

Also other useful outbuildings.

TENURE

The property is of Freehold Tenure.

MONEY LAUNDERING

The successful purchaser will be required to produce adequate identification to prove their identity within the terms of the Money Laundering Regulations. Appropriate examples include: Passport/Photo Driving Licence and a recent Utility Bill. Proof of funds will also be required, or mortgage in principle papers if a mortgage is required.

Services

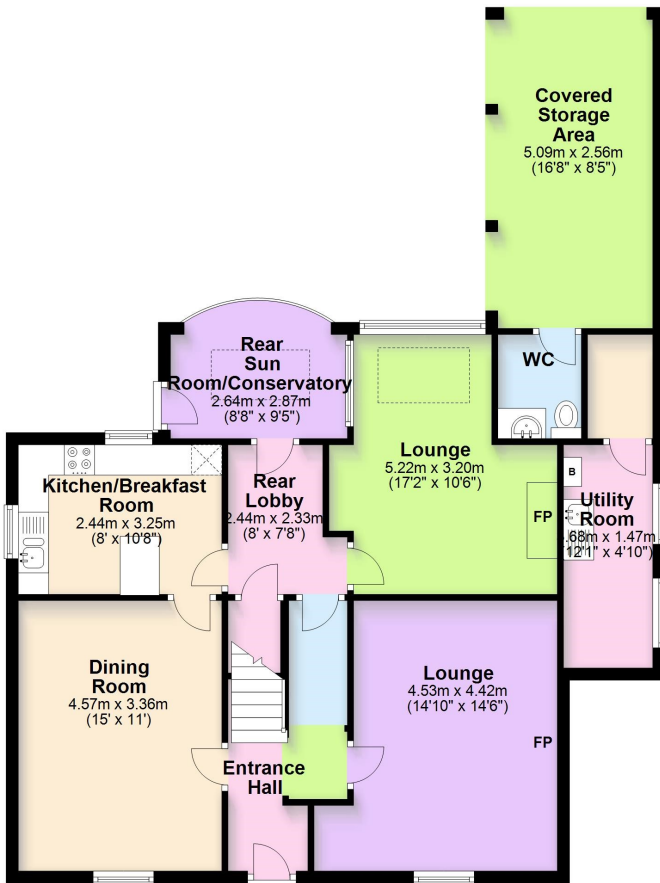
The property benefits from Mains Water, Electricity and Drainage. Gas Fired Central Heating for main residence. Oil Fired Central Heating for annex.

Council Tax Band : F (for Aeron Villa)

Council Tax Band : C (for Annex)

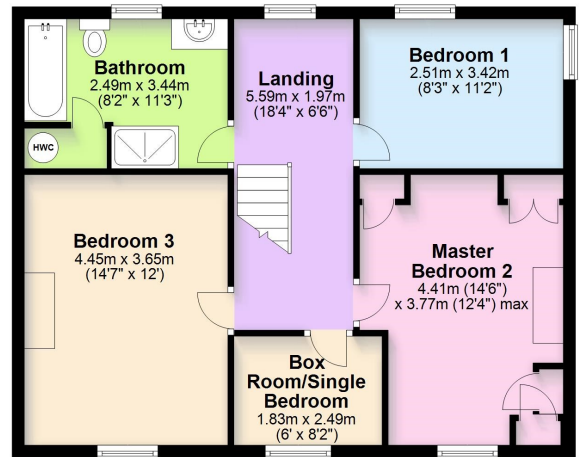
Ground Floor

Approx. 97.6 sq. metres (1050.4 sq. feet)



First Floor

Approx. 62.4 sq. metres (672.1 sq. feet)



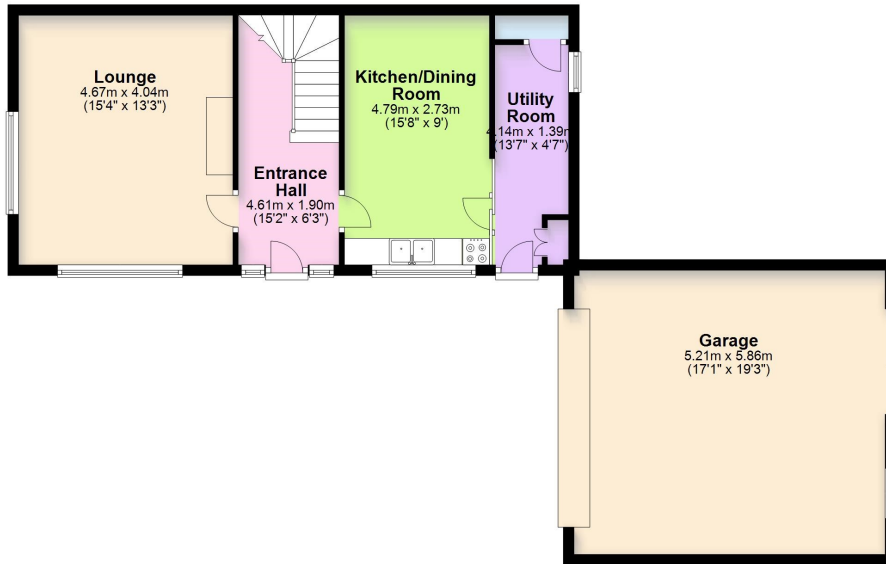
Total area: approx. 160.0 sq. metres (1722.4 sq. feet)

The Floor plans are for guidance only. Whilst every attempt has been made to ensure the accuracy of the floor plan contained here, measurements of doors, windows, rooms and any other item are approximate and no responsibility is taken for any error, omission, or misstatement.
Plan produced using PlanUp.

Aeron Villa, Felinfach, LAMPETER

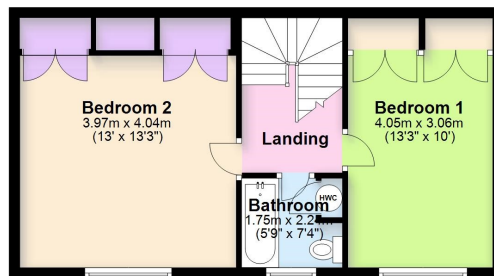
Ground Floor

Approx. 79.1 sq. metres (851.4 sq. feet)



First Floor

Approx. 41.9 sq. metres (450.7 sq. feet)



Total area: approx. 121.0 sq. metres (1302.1 sq. feet)

The Floor plans are for guidance only. Whilst every attempt has been made to ensure the accuracy of the floor plan contained here, measurements of doors, windows, rooms and any other item are approximate and no responsibility is taken for any error, omission, or misstatement.
Plan produced using PlanUp.

Y Bwthyn, Aeron Villa, Felinfach



Directions

Travelling on the main A482 road towards Lampeter from Aberaeron South East. As you reach the village of Felinfach the property will be located between The Vale of Aeron public house and the garage on the left hand side.

Energy Efficiency Rating

	Current	Potential
<i>Very energy efficient - lower running costs</i>		
(92+) A		
(81-91) B		
(69-80) C		
(55-68) D		65
(39-54) E		
(21-38) F	23	
(1-20) G		
<i>Not energy efficient - higher running costs</i>		
England, Scotland & Wales	EU Directive 2002/91/EC	

For further information or to arrange a viewing on this property please contact :

Aberaeron Office
4 Market Street
Aberaeron
Ceredigion
SA46 0AS

T: 01545 571 600

E: aberaeron@morgananddavies.co.uk

<http://www.morgananddavies.co.uk>



Regulated by

RICS[®]

