

**hastings**  
INTERNATIONAL



**Frederick Square**

**£525,000**

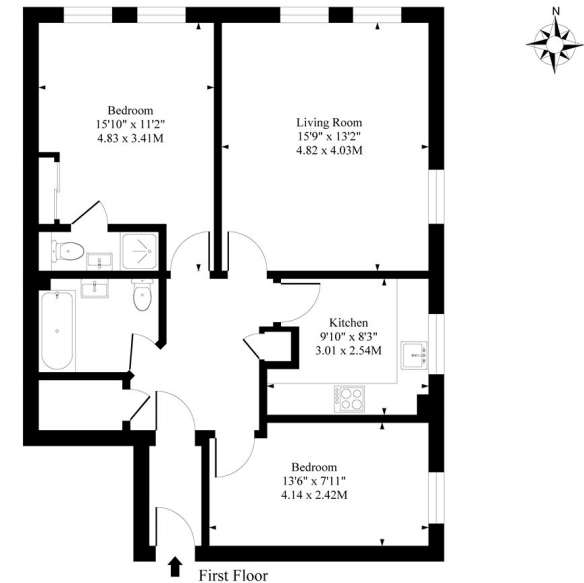
## Frederick Square, London SE16 5XR

A well presented, dual aspect, two bedroom, two bathroom first floor apartment with direct river views. located within Frederick Square, a sought-after riverside development moments from the Thames Path, Stave Hill Ecological Park and Surrey Quays Shopping Centre. The nearest station is Canada Water [Jubilee and Overground] with regular riverboat services to Canary Wharf via nearby Doubletree Docklands Nelson Dock Pier.

Enjoying a corner position within Frederick Square, this well-presented apartment comprises entrance hall with storage cupboards, impressive dual aspect reception room with dining area, separate fitted kitchen with work tops and integrated appliances, master bedroom with en-suite shower room and fitted wardrobes, guest bedroom two and bathroom. The apartment has the benefit of river views, allocated parking and is considered ideal for convenient access to nearby underground stations together with Surry Quays shopping centre and Stave Hill Ecological Park.

- Frederick Square SE16
- Dual Aspect Apartment
- Two Bathrooms
- Gated Development
- Direct River Views
- Two Double Bedrooms
- Allocated Parking
- Excellent Location

Frederick Square, London, SE16



Approximate Gross Internal Area 730 Sq Ft - 67.60 Sq M

Measured in accordance with RICS guidelines. Every attempt is made to ensure accuracy. However all measurements are approximate. The floor plan is illustrative purposes only and is not to scale.







