

**2 Bedroom(s), Apartment, Leasehold**

**Grangefield Court, Cantley.**



- 3D Virtual Tour Available
- Ground Floor Apartment
- Two Bedrooms
- Allocated Car Parking Space and Visitor Parking
- Close to Many Local Amenities
- No Chain
- Open Plan Kitchen Dining and Living Room
- Bathroom
- Popular Location in Cantley

**Offers Over  
£90,000  
Reduced**

*Book your viewing today* Tel: 01302 247754

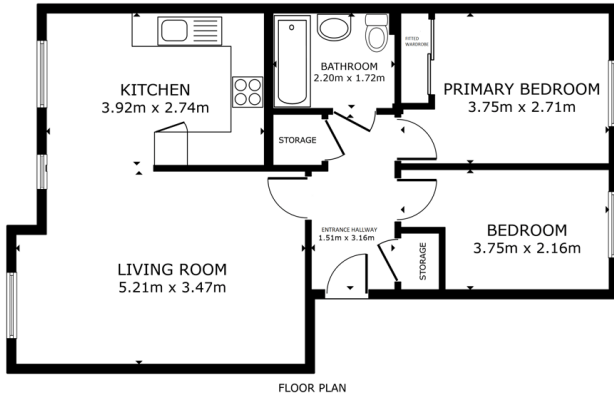
## Owner's View

3D Virtual Tour Available- Take a closer, more detailed look around via our 3D Virtual Tour! Don't forget that you can also check availability for viewings online via a visit to our website...

Grangefield Court is a small block of apartments located in a popular area of Cantley. The apartment is situated just a throw away from the Co-op, together with bus routes into Doncaster city centre, there are many walks on your doorstep too.

## Ground Floor Apartment

### Floor Plan



GROSS INTERNAL AREA  
 FLOOR PLAN 37.3 sqm  
 TOTAL 37.6 sqm  
NOTES AND DIMENSIONS ARE APPROXIMATE, ACTUAL MAY VARY

Matterport



First Bedroom



Second Bedroom

## Open Plan Kitchen Lounge and Dining Room



## Bathroom



Whilst every effort is made to ensure that the information contained in these particulars is reliable, they do not constitute or form part of an offer or any contract. The Property Hive accept no liability for the accuracy of the contents, and therefore they should be independently verified by prospective buyers or tenants before agreeing an offer. All measurements provided are approximate and should be verified before exchange of contracts. No appliances, fixtures or fittings have been tested and should be checked by the buyer before exchange of contracts to ensure they are in good working order.

## External

### Front Aspect



### Rear Aspect

## Property Information

Council Tax Band - B  
 Utilities - Mains Electricity, Mains Water  
 Water Meter - Yes  
 Average Annual Electricity Bills -  
 Average Annual Gas Bills -  
 Average Annual Water Bills -  
 Tenure - Leasehold  
 Solar Panels - No  
 Space Heating System - Electric heating  
 Approximate Heating System Installation Date -  
 Water Heating System - Electric immersion heated tank  
 Approximate Water Heating Installation Date -  
 Boiler Location - In cupboard  
 Approximate Electrical System Installation Date -  
 Approximate Electrical System Test Date -  
 Fires/Heaters - None  
 Permanent Loft Ladder - N/A  
 Loft Insulation - N/A  
 Loft Boarded out - N/A

All measurements provided are approximate and should be verified before exchange of contracts. No appliances have been tested and should be checked to ensure they are in good working order.

## Energy Performance Certificate

