

FOR SALE

Montagu House, Greenside Road,
Shepherd's Bush, W12

Flat
Ravenscourt Park

£690,000 lh

2  2  1 

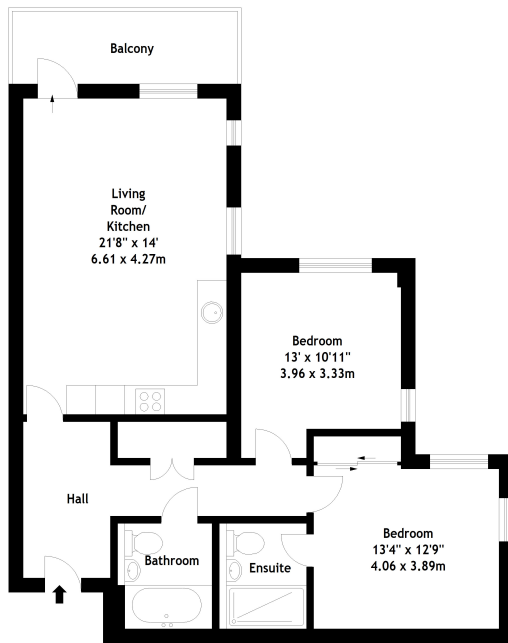


**horton
andgarton**

SALES / LETTINGS / PROPERTY MANAGEMENT

hortonandgarton.co.uk | Sales 020 8819 0510 | Lettings 020 8819 0511
172 King Street, Hammersmith, W6 0QU





Fourth Floor

**horton
and garton**

Flat 31,
Montagu House, Greenside Road, London W12 9DE

Gross Internal Area 856 sq ft - 79.52 sq m

Drawn from supplied plans. All measurements are approximate.
This floor plan is for illustrative purposes only and is not to scale.
© Horton and Garton Estate Agents 2025



Fourth floor purpose built flat | Two bedrooms - Two bathrooms | 856 Sq' - 79.52 SqM | West facing balcony | EPC rating B | Ravenscourt Park



hortonandgarton.co.uk
Sales 020 8819 0510
Lettings 020 8819 0511

172 King Street, Hammersmith, W6 0QU