



St Marys Court 100, Haywood Road, Taunton, Somerset, TA1 2LL

£134,995
Leasehold

- 2 Double Bedroom Maisonette
- Spacious Accommodation
- Double Glazing and Gas Central Heating
- Secure Storage Lock up
- Rental Excluding bills £895pcm
- NEWLY DECORATED
- NEW CARPETS THROUGHOUT
- No Onward Chain



PROPERTY DESCRIPTION

Newton King are delighted to offer to the market this NEWLY DECORATED spacious first floor maisonette located in a quiet cul-de-sac location in Holway within close proximity of local shops and amenities. Accommodation comprises of: entrance hall, kitchen, spacious living room, two double bedrooms to the first floor and family bathroom. Externally the property benefits from communal gardens and a secure storage shed

The property has great rental potential and would make an ideal investment with a monthly rental of £895pcm excluding bills.

The Management charge is £105.95 per month

The lease is 125 years from January 1986

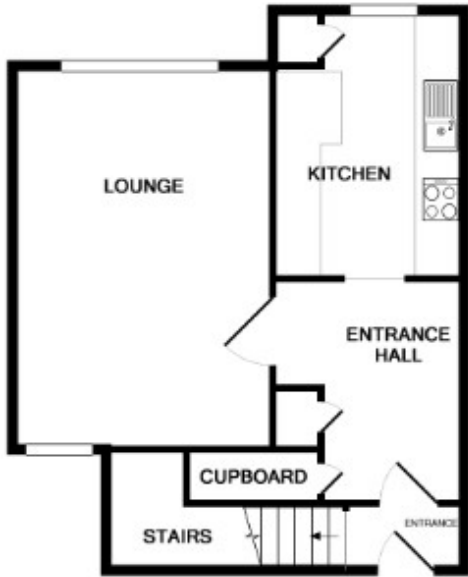
Council Tax Band B, EPC Rating D

The property is offered to the market with no onward chain, please contact Newton King to arrange an accompanied viewing between 9am and 6pm.





FLOORPLAN & EPC



GROUND FLOOR



1ST FLOOR

Energy Efficiency Rating		Current	Potential
Very energy efficient - lower running costs			
(92+)	A		
(81-91)	B		
(69-80)	C		78
(55-68)	D	67	
(39-54)	E		
(21-38)	F		
(1-20)	G		
Not energy efficient - higher running costs			
England, Scotland & Wales		EU Directive 2002/91/EC	