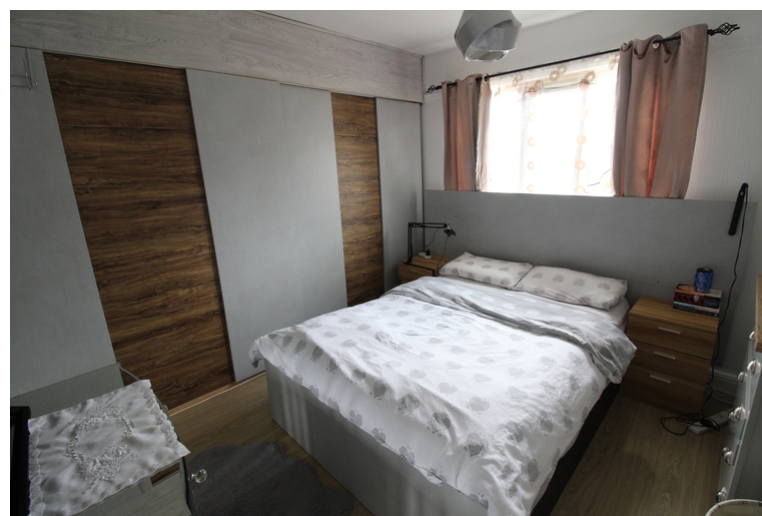




Day & Co
ESTATE AGENTS

28 Cavendish Street
Keighley
BD21 3RG



235 Highfield Road, Keighley,
West Yorkshire, BD21 2RN

£149,995

T: 01535 664609

W: www.dayandcoestateagents.co.uk

E: keighley@dayandcoestateagents.co.uk

- EPC Rating Is D
 - Three Bedrooms
 - Rear Garden
- Extended Mid Town House
 - Two Reception Rooms
 - NO CHAIN

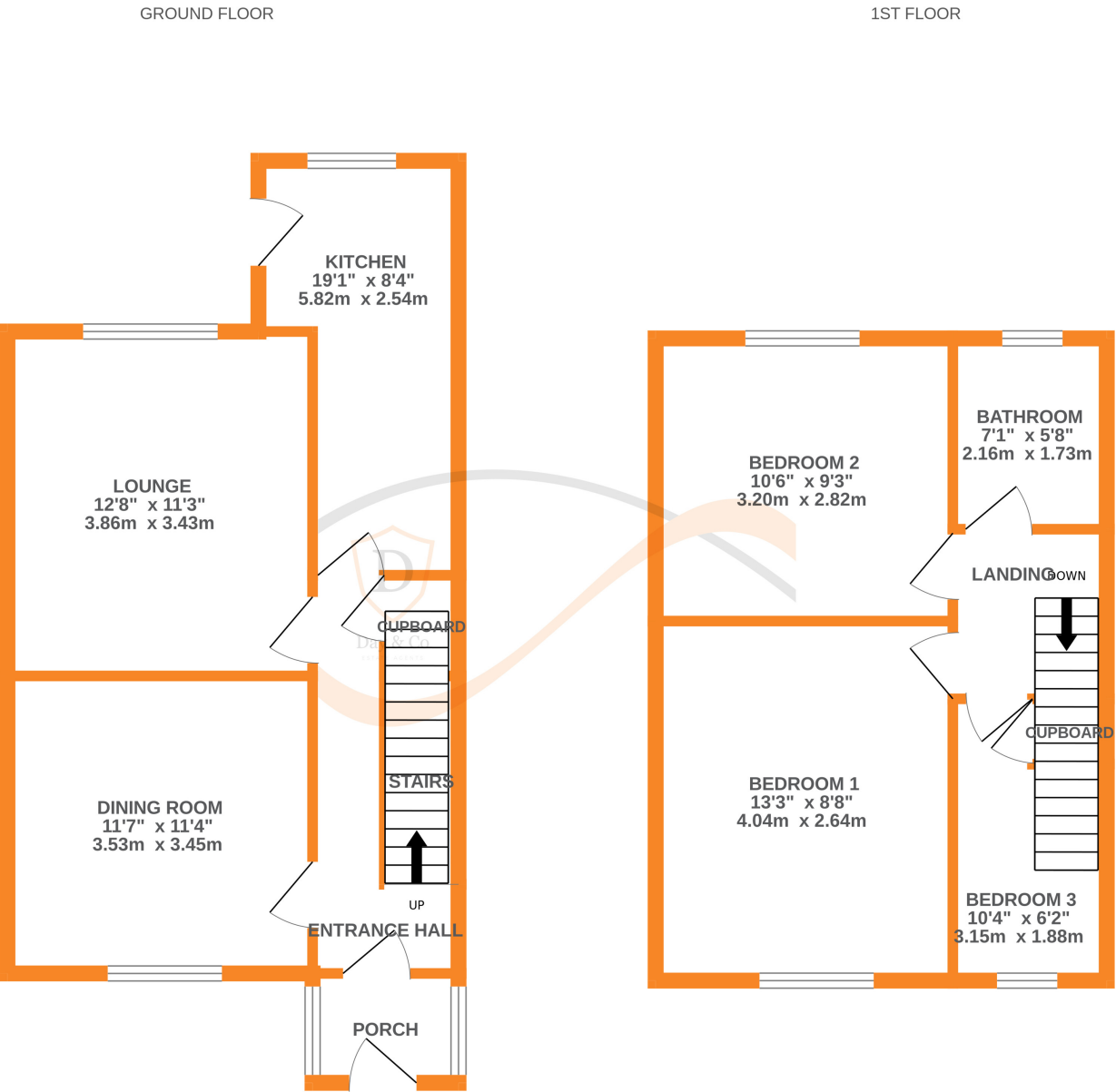
SUMMARY

AN EXTENDED 3 BEDROOM MID TOWN HOUSE, ELEVATED POSITION IN THIS POPULAR & CONVENIENT RESIDENTIAL LOCATION - EXCELLENT ACCESS TO KEIGHLEY TOWN CENTRE!! Having 2 reception rooms, gas central heating, double glazing, rear garden - OFFERED FOR SALE WITH NO ONWARD CHAIN!! EPC rating is D.

FULL DESCRIPTION

Of interest to a variety of buyers is this extended three bedroom mid town house situated in this popular and convenient residential location with excellent access to Keighley town centre. The accommodation comprises of an entrance porch leading to an inner hallway, the dining room has double glazed window to the front and a radiator. There is a spacious lounge and the dining kitchen has a range of modern base and wall mounted units, integrated oven, hob and extractor fan, double glazed window to the rear and a door leading to the rear garden. To the first floor there are three bedrooms, and the bathroom which has a three piece suite comprising of a bath with shower over, WC, wash hand basin. Externally there is a rear garden with outbuilding. Offered for sale with no onward chain, EPC rating is D.

NB: This property can be sold either with tenant in situ or vacant posession



Whilst every attempt has been made to ensure the accuracy of the floorplan contained here, measurements of doors, windows, rooms and any other items are approximate and no responsibility is taken for any error, omission or mis-statement. This plan is for illustrative purposes only and should be used as such by any prospective purchaser. The services, systems and appliances shown have not been tested and no guarantee as to their operability or efficiency can be given.
Made with Metropix ©2024