





Key Features

 2 Bedrooms

 1 Public

 1 Bathroom

- A spacious, well-presented two bedroom terraced home, situated within the popular Fife town of Glenrothes
- The property will make a fantastic first time home or buy to let investment with a variety of amenities close to hand including the Kingdom Shopping Centre, various convenience stores and supermarkets and leisure facilities at the Michael Woods centre and a multiscreen cinema
- Glenrothes boasts its very own 18-hole Golf course as well as Golf course within Balbirnie estate, and both Primary and Secondary schooling are available
- For the commuter the A92 allows swift access to Edinburgh and there are railway stations at both Thornton and Markinch with services to Edinburgh. Park and Ride facilities at Halbeath with a regular bus service to Edinburgh Airport
- Ample off street parking available to the front of the home
- Living room with storage cupboard and a contemporary kitchen offering a wide selection of floor and wall mounted storage, integrated appliances and access onto enclosed gardens
- Two double bedrooms on the first floor with built in wardrobe space available
- Modern shower room with double, walk in double shower, rainfall shower head, WC and wash hand basin
- Enclosed gardens, laid to lawn with small patio
- An excellent first time home within a quiet residential setting and viewing comes highly recommended



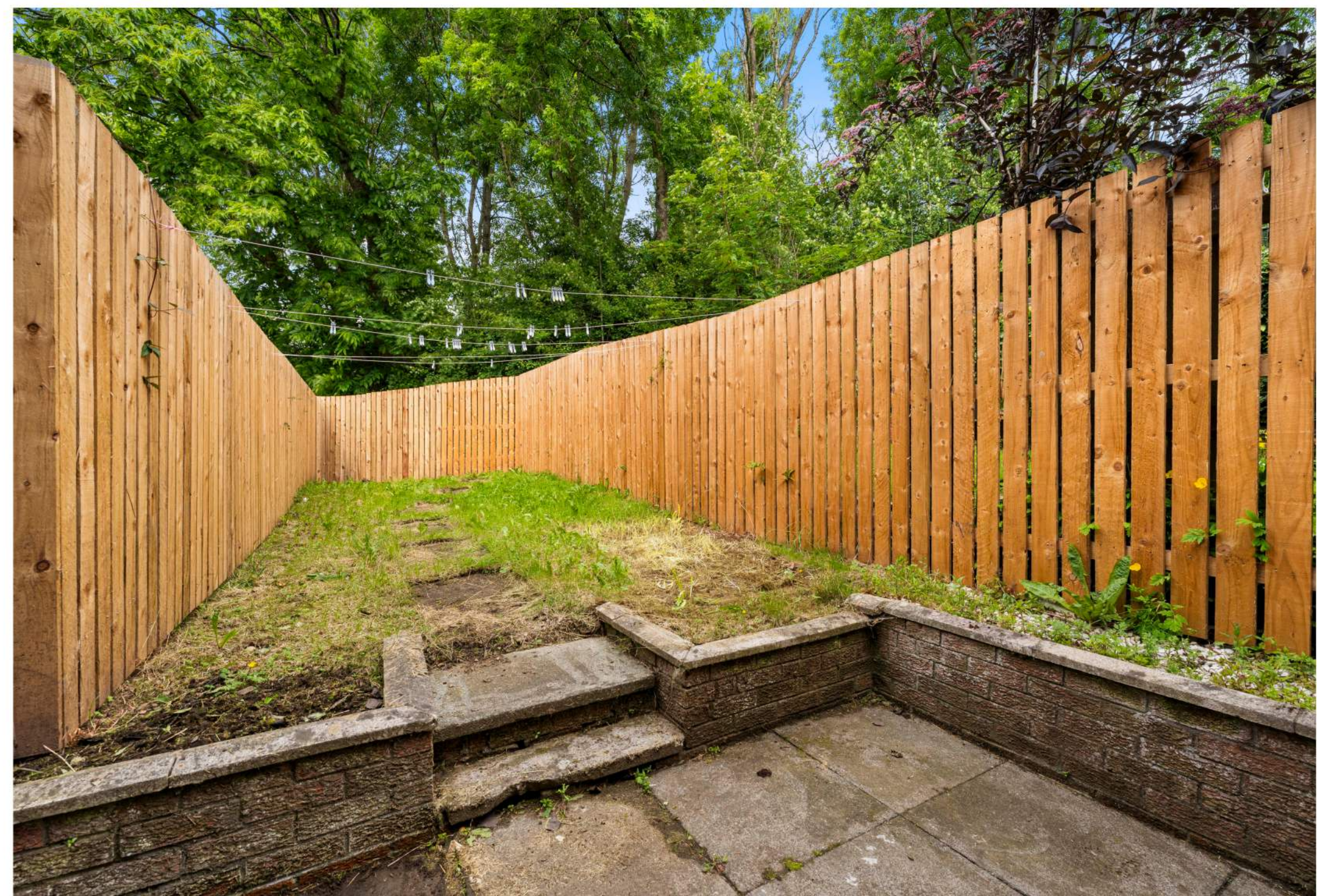


Location

Situated in the heart of Fife, Glenrothes offers an exceptional balance of tranquil living and modern convenience, making it an increasingly sought-after location for families, professionals, and retirees alike. As one of Scotland's post-war new towns, Glenrothes is thoughtfully laid out with ample green spaces, award-winning landscaping, and a strong sense of community throughout its well-established neighbourhoods.

The town benefits from excellent transport links—positioned strategically between Edinburgh and Dundee—with quick access to the A92 and nearby Markinch railway station providing regular services to major cities. For those commuting or travelling further afield, Edinburgh Airport is just under an hour's drive away.

Glenrothes boasts a wide range of local amenities, including the Kingdom Shopping Centre, a modern leisure centre, a golf course, and numerous parks and woodland walks such as Riverside Park and Balbirnie Park. The area is well served by reputable primary and secondary schools, and there's a campus of Fife College offering further education opportunities. With a blend of residential calm and urban accessibility, Glenrothes is an ideal locale for buyers seeking quality of life with the convenience of a central Fife location.



Enquiries

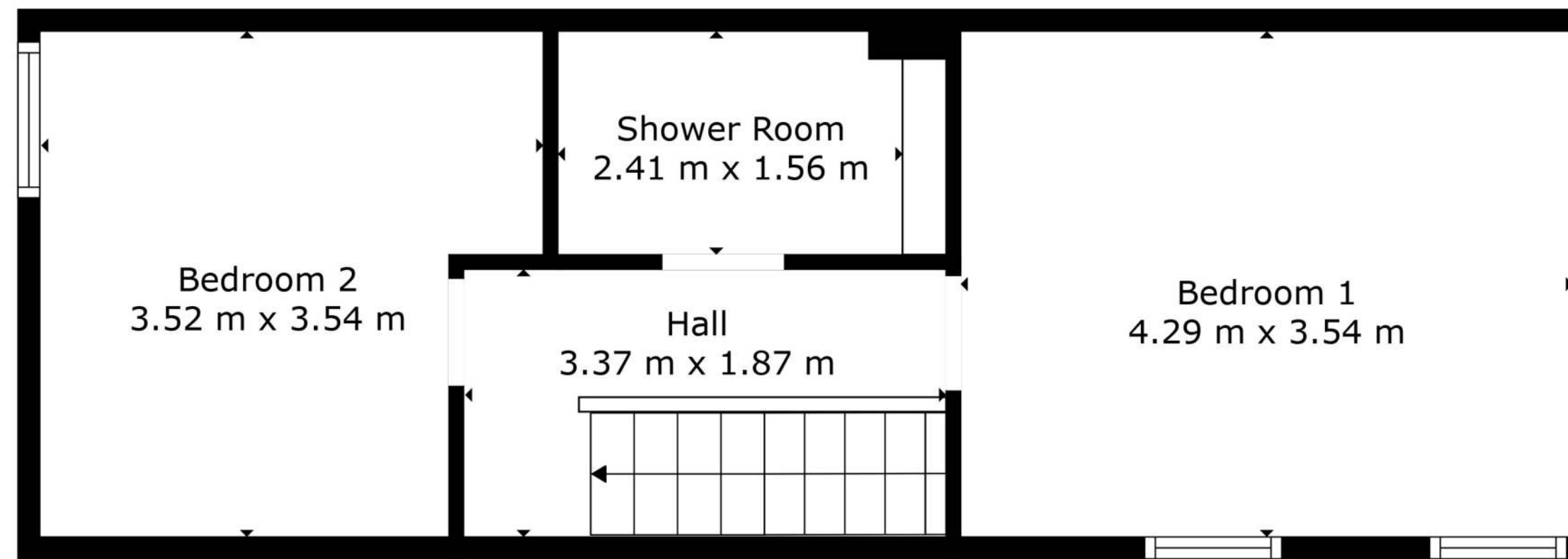
 01383 629720

 info@maloco.co.uk

 maloco.co.uk



Floorplans are for illustrative purposes only. Measurements are deemed highly reliable but not guaranteed.



Floor 2



Floor 1



Floor Plan Created By Cubicasa App. Measurements Deemed Highly Reliable But Not Guaranteed.

