



Krupa Mews , E14 7XY

Cow & Co
LONDON



Guide Price of £850,000 - £900,000

The location here is as convenient as it is peaceful. Situated literally a stones throw away from Limehouse DLR station and Limehouse Marina, as well as numerous amenities immediately available on Commercial Road, offering all the proximity to the very best Limehouse has to offer! This includes a short walk into Narrow Street, home to Gordon Ramsay's famous Bread Street Kitchen, formerly The Narrow. where you enjoy some of London's most amazing gastro, over a cocktail as you enjoy the river views.

With no expensive service charges to worry about, and within a part of London already rated as one of East London's most vibrant and sought after locations to live. Freehold.

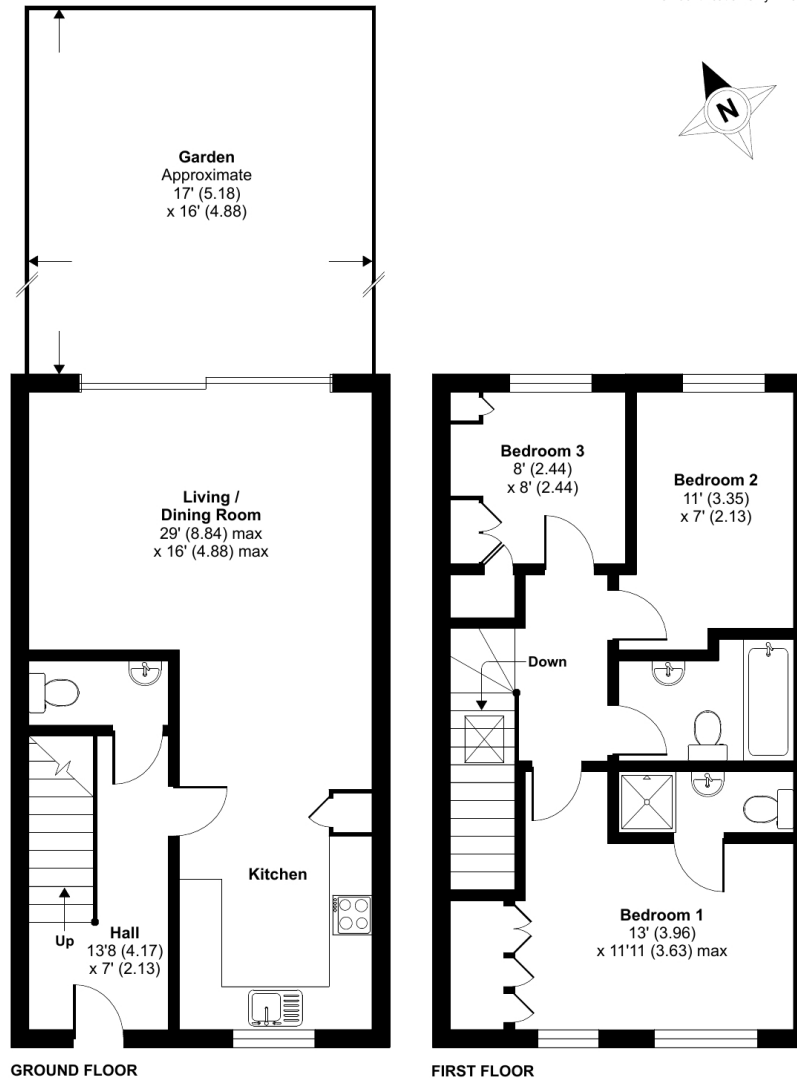


- A beautiful three bedroom modern built home situated in a secure gated development
- Downstairs WC
- Sleek contemporary style kitchen open plan to lovely living area with ample space to dine and entertain
- Lovely bi-folding doors leading onto well kept rear garden
- Well appointed family bathroom with shower
- Master bedroom with ensuite shower-room
- Close proximity to local transport links and amenities
- Premier location

Krupa Mews, E14

Approximate Area = 950 sq ft / 88.3 sq m

For identification only - Not to scale



Floor plan produced in accordance with RICS Property Measurement Standards incorporating International Property Measurement Standards (IPMS2 Residential). © nchecon 2024. Produced for Cow & Co Properties Ltd. REF: 1159105

Tel: 0208 065 0010
Email: thehub@cowandco-london.com
Web: cowandco-london.com

Agents note: All measurements are approximate and whilst every attempt has been made to ensure accuracy they are for general guidance only and must not be relied on. The fixture and fittings referred to have not been tested and therefore no guarantee can be given that they are in working order. Internal photographs are reproduced for general information and it must not be inferred that any item shown is included with the property.

Cow & Co
LONDON