



Three Bedroom Semi-Detached House
Maidstone Road, Wigmore, Gillingham, Kent, ME8 0HU

Guide Price £375,000
Freehold

Maidstone Road, Wigmore, Gillingham, Kent, ME8 0HU

Guide Price £375,000

Freehold

Description

*** Guide Price £375,000-£400,000 *** If you are looking for a spacious family home, situated in popular Wigmore, close to schools, transport links and local amenities, then this extended semi detached property is the one for you! The accommodation is set over three floors and offers ample living space with a spacious lounge through dining room, with French doors to the garden, a well appointed white gloss kitchen and separate utility space, downstairs W/C. The family bathroom and two generous double bedrooms are on the first floor along with a study/office space with stairs leading to the loft conversion where you will find another sizeable double bedroom with side dormer, four Velux windows and bags of storage space. Externally to the front a driveway for multiple vehicles, gated side access, and to the rear an attractive east facing garden with handy storage sheds, plant borders and lawn, which is ideal space for entertaining and a great way to end the day, watching the sun go down. This will be popular so call Greyfox Sales Team in Rainham and book your viewing now!

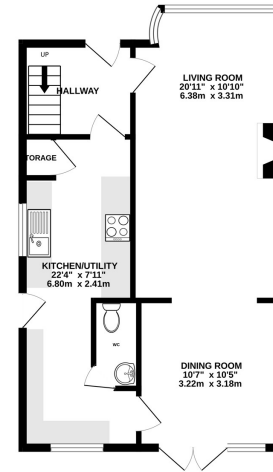
Key Features

- Extended Semi Detached Family Home
- Spacious Through Lounge/Dining Room
- Sought After Wigmore Location
- Three Generous Double Bedrooms
- Well Appointed Kitchen & Separate Utility Space
- Family Bathroom & Downstairs W/C
- Great Access to Transport Links, Schools & Local Amenities
- East Facing Rear Garden Measuring Approx 41x37ft

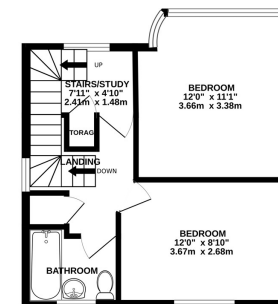
Local Area

Wigmore is a popular residential area to the south of Gillingham and east of Hempstead, initially a small holding area the location has grown and offers a variety of amenities, good connections to the A2/M2, M25 and Bluewater. The local rail station is located at Rainham with good access to London.

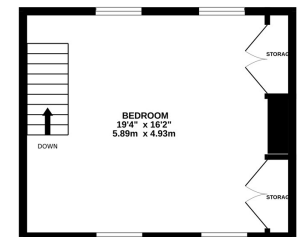
GROUND FLOOR
561 sq.ft. (52.1 sq.m.) approx.



1ST FLOOR
369 sq.ft. (34.3 sq.m.) approx.



2ND FLOOR
306 sq.ft. (28.5 sq.m.) approx.



TOTAL FLOOR AREA : 1237 sq.ft. (114.9 sq.m.) approx.

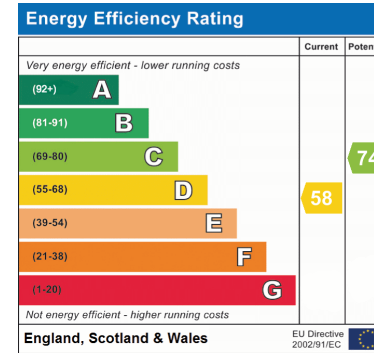
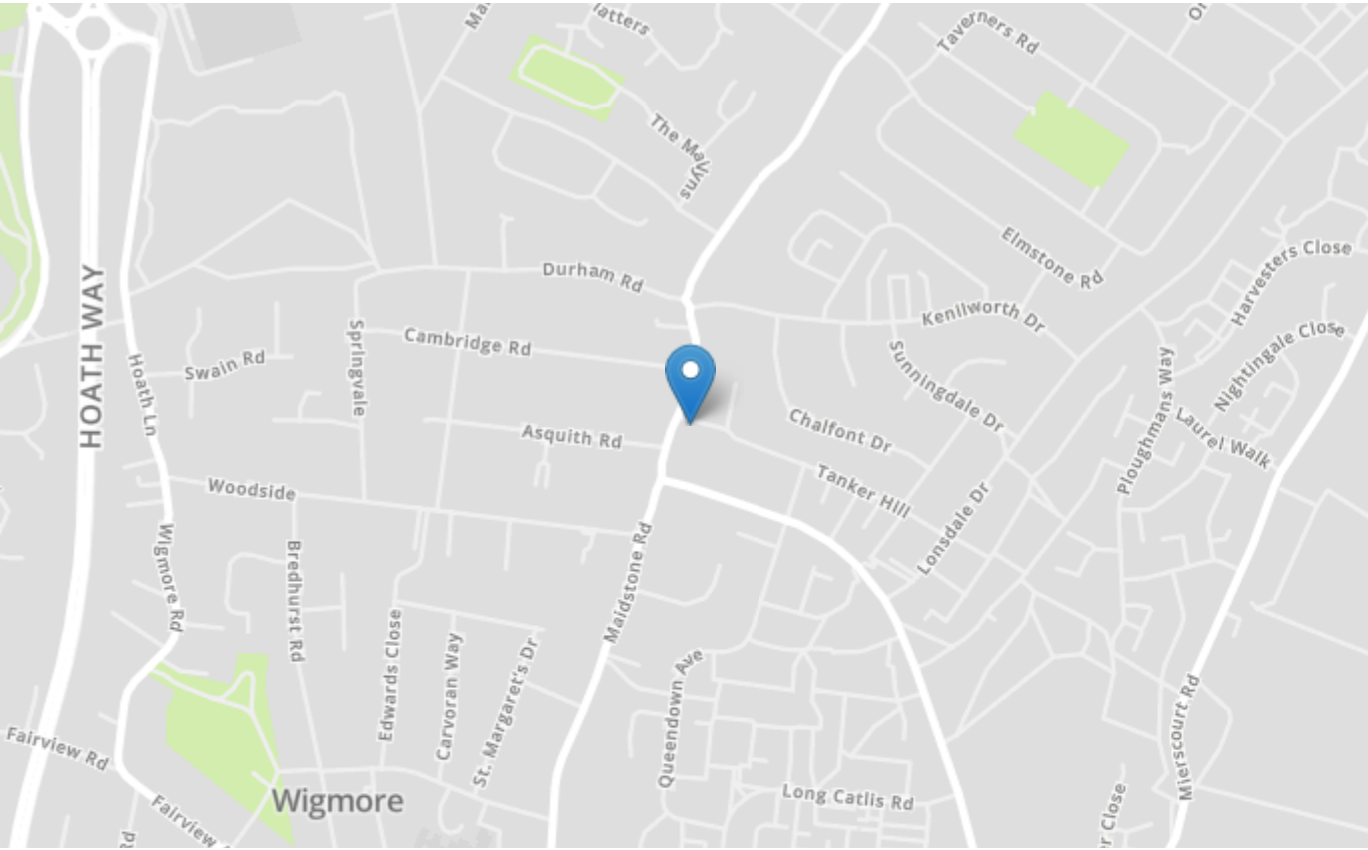
Whilst every attempt has been made to ensure the accuracy of the floorplan contained here, measurements of doors, windows, rooms and any other items are approximate and no responsibility is taken for any error, omission or mis-statement. This plan is for illustrative purposes only and should be used as such by any prospective purchaser. The services, systems and appliances shown have not been tested and no guarantee as to their operability or efficiency can be given.

Made with Metropix ©2024



Property Location

Maidstone Road, Wigmore, Gillingham, Kent, ME8 0HU



Tenure	Freehold
Lease Term	N/A
Ground Rent	N/A
Service Charge	N/A
Local Authority	Medway
Council Tax	Band D

Greyfox Walderslade

Unit 2, Thetford House
Walderslade Village Centre
Walderslade Road
Chatham
Kent

ME5 9LR

Tel: 01634 672227 Email:
walderslade@greyfox.co.uk

Greyfox Rainham

67C High Street
Rainham
Kent
ME8 7HS

Tel: 01634 377737 Email:
rainham@greyfox.co.uk

Agent Notes

These particulars are prepared as a general guide to a broad description of the property and should not be relied upon as a statement or representation of fact and do not constitute part of an offer or contract. The seller does not make or give nor do our employees or Greyfox have authority to make or give any representation or warranty to the property. We have not carried out a structural survey and the services, appliances and specific fittings have not been tested. All photographs, measurements, floorplans and distances referred to are given as a guide only and should not be relied upon for the purchase of carpets or any other fixtures or fittings. Lease details, service charges and ground rent (where applicable) and council tax are given as a guide only and should be checked and confirmed by you on inspection and your solicitor prior to exchange of contracts. If there are any points of particular importance to you we will be pleased to check the information for you and to confirm that the property remains available. This is particularly important should you be travelling some distance to view and where statements have been made by us to the effect that the information has not been verified. The copyright of all details, photographs and floorplans remain exclusive to Greyfox. For details of our privacy policy and referral fee arrangements with any of our selected partner companies please visit <https://www.greyfox.co.uk/legal/privacy> and <https://www.greyfox.co.uk/referral-fees>.