



Heathfield Road, Broomfield, Chelmsford, Essex, CM1 7BZ

Council Tax Band C (Chelmsford City Council)

 1  3  1

£375,000 Freehold

ACCOMMODATION

Bond Residential are delighted to offer for sale this extended terrace house being sold with no onward chain situated in Broomfield.

The property offers an entrance hall, lounge, dining area with sliding patio door which overlooks and leads to the rear garden and fitted kitchen. To the first floor there are three bedrooms and a family bathroom. Outside the property benefits from an established rear garden which is mainly laid to lawn with timber built summerhouse. A pathway leads to the garage which is accessed to the rear of the house.

LOCATION

Set within the popular parish of Broomfield which is situated to the North of Chelmsford, the property is conveniently positioned within walking distance of local amenities and a bus stop with service into the city centre. The parish of Broomfield offers a village like feel with its own Church and church green, two local pubs/restaurant's, library, local news agents/convenience store, a football club and cricket club. Situated to the North of Chelmsford city centre, Broomfield offers a regular bus service to the city centre and mainline station.

Chelmsford city centre offers a thriving nightlife with a selection of bars and a wide selection of places to eat from independent family restaurants to well known chain restaurants serving cuisines from around the world, Chelmsford features a comprehensive range of shopping facilities with its pedestrianised High Street, two shopping precincts and hugely popular Bond Street with John Lewis store.

Chelmsford is extremely popular with leisure enthusiasts with a selection of sports clubs and gyms including the newly refurbished Riverside Ice & Leisure. Chelmsford is renowned for its educational excellence, Broomfield offers a popular primary school as well as Chelmer Valley High Schools. Both of Chelmsford's highly sought after grammar schools, King Edward VI grammar school and The County High School for girls are within a bus ride from the property along Main Road, Broomfield.

- Extended Terrace House
- Gas Central Heating
- Lounge
- Garage To Rear

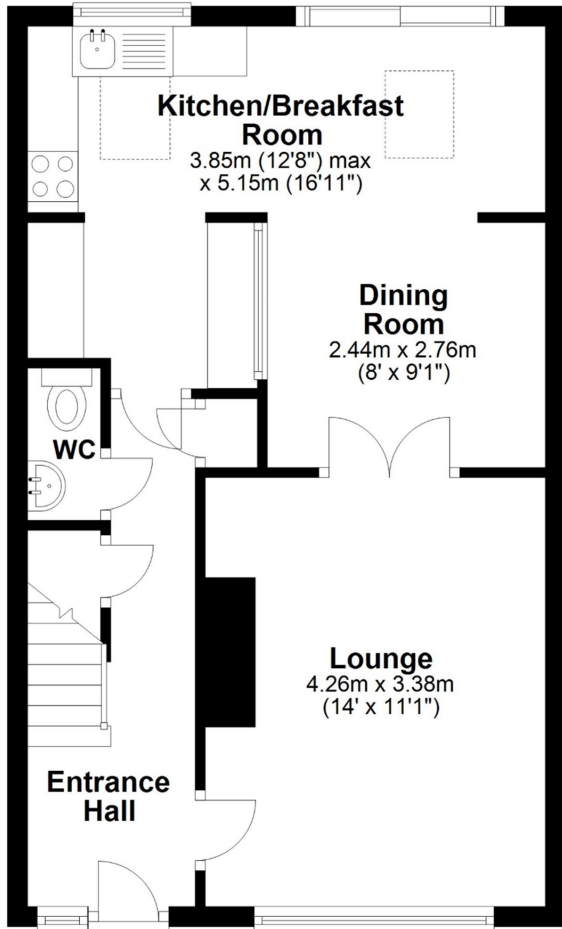
- No Onward Chain
- Open Plan Kitchen/Dining Area
- Three Bedrooms
- Established Rear Garden



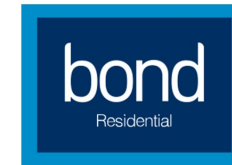
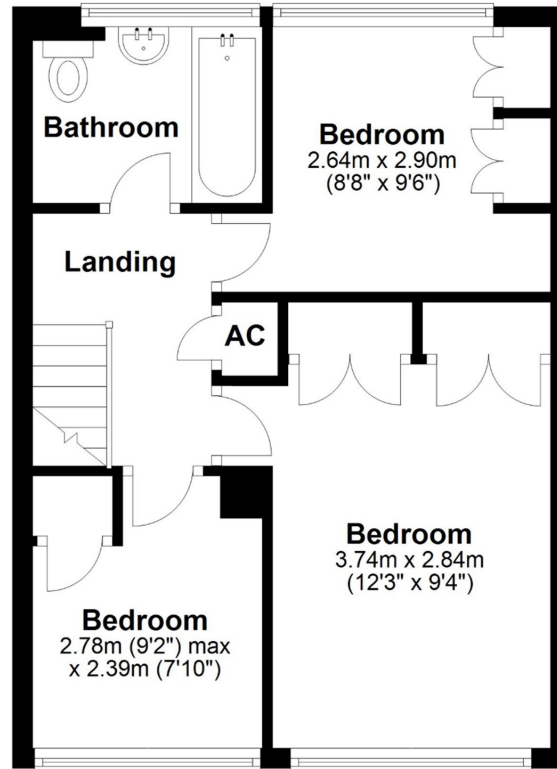




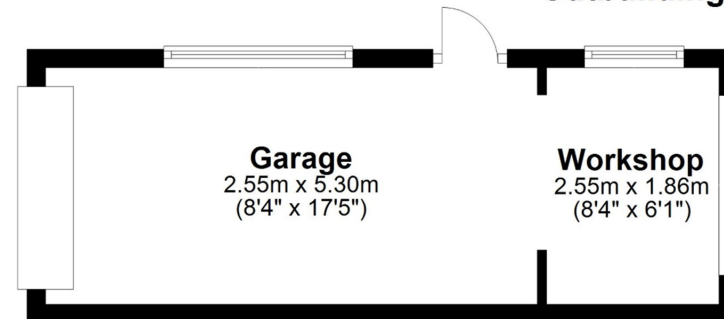
Ground Floor



First Floor



Outbuilding



APPROX INTERNAL FLOOR AREA 84 SQ M (900 SQ FT)

OUTBUILDING 19 SQ M (200 SQ FT)

TOTAL 103 SQ M (1100 SQ FT)

This floorplan is for illustrative purposes only and is **NOT TO SCALE**
All measurements are approximate **NOT** to be used for valuation purposes
Copyright Bond Residential 2023

78, New London Road,
Chelmsford, Essex, CM2 0PD
Telephone: 01245 500599
Website: www.bondresidential.co.uk

Consumer Protection from Unfair Trading Regulations 2008 and the Business Protection from Misleading Marketing Regulations 2008. Bond Residential have made every effort to ensure that consumers and/or businesses are treated fairly and provided with accurate material information as required by law. We have not tested any apparatus, equipment, fixture, fitting or any services and as such are unable to verify they are in working order, fit for their purpose, or within the ownership of the seller or landlord. Neither have we been able to check the legal documentation to verify the legal status of the property. We therefore advise potential buyers or tenants to verify these matters with their own solicitors or other advisers.

