



GB





**2 perrin Court Parkland Grove, Ashford TW15 2GA**  
**£149,950 - Leasehold**





## PROPERTY DESCRIPTION

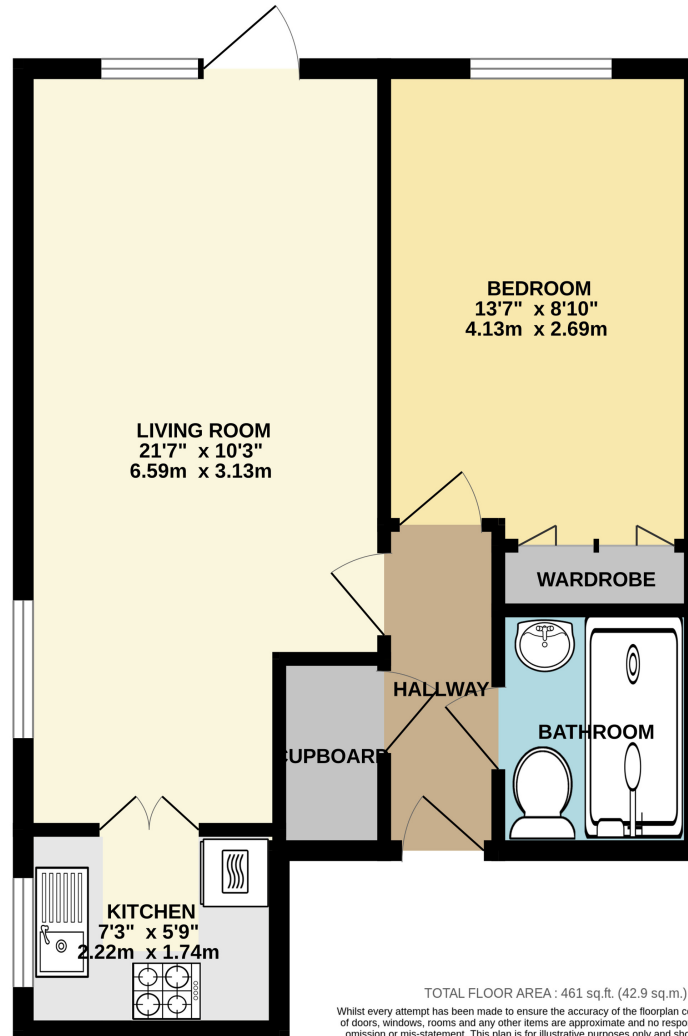
Situated in the heart of Ashford town centre is this ground floor one bedroom warden assisted retirement apartment. The accommodation comprises of a hallway, good size dual aspect 21' living room with door opening out onto the garden, fitted kitchen benefiting from a built in oven and hob, 13' double bedroom with fitted double wardrobes and a shower room. Perrin Court also has the benefit of a good size residents lounge, communal laundry and parking, The property is being sold with no onward chain.

## POINTS OF INTEREST

- Warden assisted retirement flat
- Town centre location
- Ground floor
- Double bedroom with builtin wardrobes
- 21' Dual aspect living room
- Shower room
- Residents lounge



GROUND FLOOR  
461 sq.ft. (42.9 sq.m.) approx.



TOTAL FLOOR AREA : 461 sq.ft. (42.9 sq.m.) approx.

Whilst every attempt has been made to ensure the accuracy of the floorplan contained here, measurements of doors, windows, rooms and any other items are approximate and no responsibility is taken for any error, omission or mis-statement. This plan is for illustrative purposes only and should be used as such by any prospective purchaser. The services, systems and appliances shown have not been tested and no guarantee as to their operability or efficiency can be given.  
Made with Metropix ©2024