



Ickleford Road

Royal Quarter | Ickleford Road | Hitchin | Hertfordshire | SG5 1TF

www.stonegate-estates.co.uk



ICKLEFORD ROAD

Property Description

A superb second floor apartment in a perfect location offering spacious accommodation and enjoying views across to Bancroft Park.

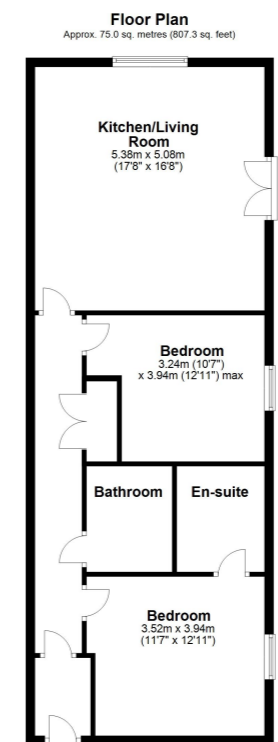
The accommodation comprises a fabulous size dual aspect, open plan living and kitchen room with 'French Doors' and a 'Juliet Balcony' that looks out across the roof tops to Bancroft Park. master bedroom with en-suite shower room, a second double bedroom, bathroom and an inner hall with built in storage cupboards and an additional entrance hall that can be shut off from the inner hall.

The perfect location enables simple access to the town centre as well as the train station with the added advantage of allocated parking.

Hitchin is a charming medieval market town and has many fine Tudor and Georgian buildings, particularly around the market square. Near to the market square stands the large medieval parish church of St Mary. The town provides good shopping as well as a swimming pool, football team, two theatres, a wide variety of restaurants and pubs and highly regarded girls and boys schools. There is also a mainline railway station providing direct access to Kings Cross, St Pancras and Cambridge.

£330,000 Leasehold





Total area: approx. 75.0 sq. metres (807.3 sq. feet)

All measurements shown are approximate and for guidance only. Garages and workshops are not included in any gross floor areas unless integral to the main building where they will be included.
Plan produced using Plan!Up.



- Two Double bedrooms
- Fabulous Location
- En-suite Shower Room
- Spacious Accommodation
- Views Across To Bancroft Park
- Allocated Parking Space
- Chain Free
- Close To Town Centre and Train Station

EPC Rating:

Stonegate Estate Agents

01462 438979

sales@stonegate-estates.co.uk | www.stonegate-estates.co.uk

