



- 3D Virtual Tour Available
- Two Reception Rooms
- Ground Floor W/C
- Shower room
- Driveway Allowing For Off Road Parking

- Semi Detached Family Home
- Kitchen
- Three Bedrooms
- Generous Rear Enclosed Garden With View of the River Don

£185,000
For Sale

Owner's View

3D Virtual Tour Available- Take a closer, more detailed look around via our 3D Virtual Tour! Don't forget that you can also check availability for viewings online via a visit to our website...This was a relatives house who lived there for approximately 50 years . They loved their time there especially the fantastic view and back garden, small cul-de-sac position and good neighbours .

Ground Floor

Floor Plan

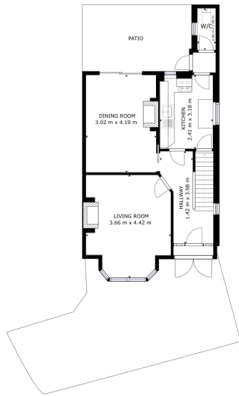


FIGURE 1

UNLESS OTHERWISE STATED, ALL MEASUREMENTS ARE IN METERS AND ARE APPROXIMATE. EXCLUDED AREAS: PORCHWAY, 11.10 m x 1.10 m; PATIO, 13.40 m x 1.10 m; TERRACE, 1.10 m x 1.10 m.

 Matterport

Bedroom



Shower Room



Kitchen



External

Front Aspect



Lounge



Rear Garden

Dining Room



We make it happen.

Tel: 01302 247754 Email: info@thepropertyhive.co.uk Web: www.thepropertyhive.co.uk

Energy Performance Certificate

Energy Efficiency Rating		
	Current	Potential
<i>Very energy efficient - lower running costs</i>		
(92+) A		
(81-91) B		86
(69-80) C		
(55-68) D	65	
(39-54) E		
(21-38) F		
(1-20) G		
<i>Not energy efficient - higher running costs</i>		
England, Scotland & Wales	EU Directive 2002/91/EC	