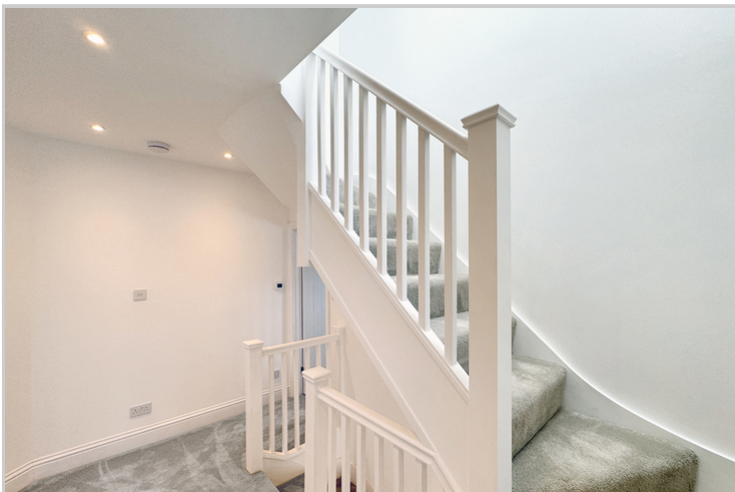


154 Felstead Road, Orpington, Kent, BR6 9AF

Property Images



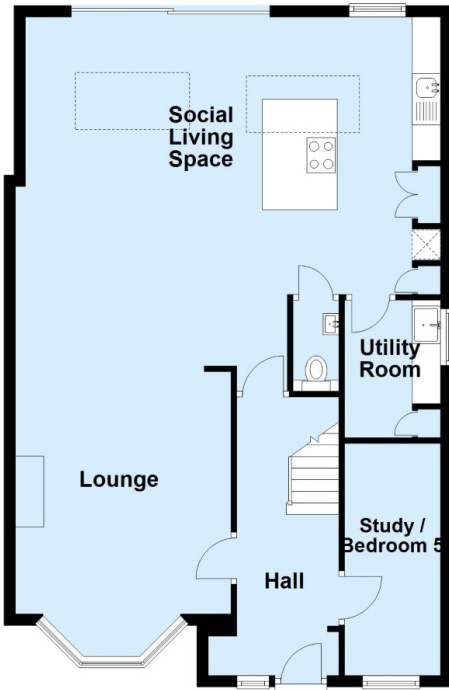






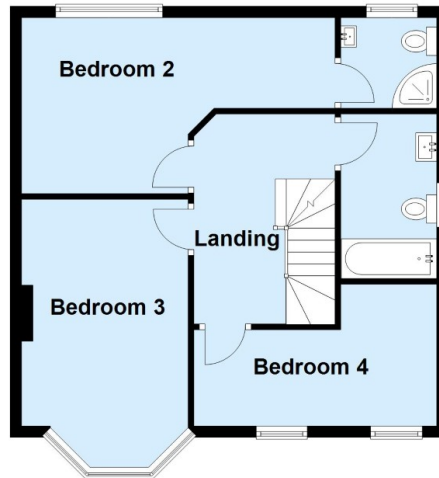
Ground Floor

Approx. 83.1 sq. metres (894.5 sq. feet)



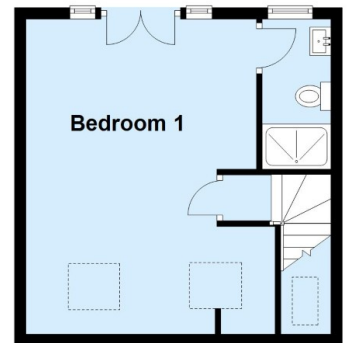
First Floor

Approx. 53.0 sq. metres (570.8 sq. feet)



Second Floor

Approx. 29.9 sq. metres (321.4 sq. feet)



Total area: approx. 166.0 sq. metres (1786.7 sq. feet)

This plan is for general layout guidance and may not be to scale.
Plan produced using PlanUp.