



Geufron, Aberdaron, Pwllheli, Gwynedd. LL53 8BD

- SUCCESSFUL HOLIDAY LET
- STUNNING PANORAMIC SEA VIEWS
- EXCELLENT CONDITION
- RURAL LOCATION
- RECENTLY RENOVATED TO A HIGH STANDARD
- AIR SOURCE HEAT PUMP

PROPERTY DESCRIPTION

Pleasantly located on the outskirts of Aberdaron on the Llyn Peninsula, Geufron offers a unique opportunity to acquire two stunning properties with enviable far reaching, sea and countryside views. Elevated and prominently positioned, these properties have been modernised and renovated to an exceptional standard.

Geufron House and Geufron Barn, currently both operate as successful holiday let businesses. The potential purchaser could take on both properties as a going concern, or could convert the main house into a residential dwelling and benefit from rental income from the barn.

Geufron House is a stunning 4/5 bedroom, 3 bathroom property with a generous open plan layout that maximises on the views. The living and dining area has vaulted ceilings that create a light and airy, yet cosy area with a feature log burner and dramatic hanging light fittings. The living space also features floor to ceiling glass at the gable end, creating a frame for the dramatic views.

Geufron Barn has been sympathetically renovated, maintaining original features and transforming what was once a barn into a desirable living accommodation. Briefly comprising of 4 double bedrooms, 2 bathrooms, open plan living area and a separate lounge. The property offers a generous space for families. Vaulted ceilings increase the feeling of space, and exposed beams add a depth of character.

Externally, both properties benefit from private gardens and designated parking areas. Both properties sit on generous grounds with a private drive. There is also an outbuilding that holds potential for development.

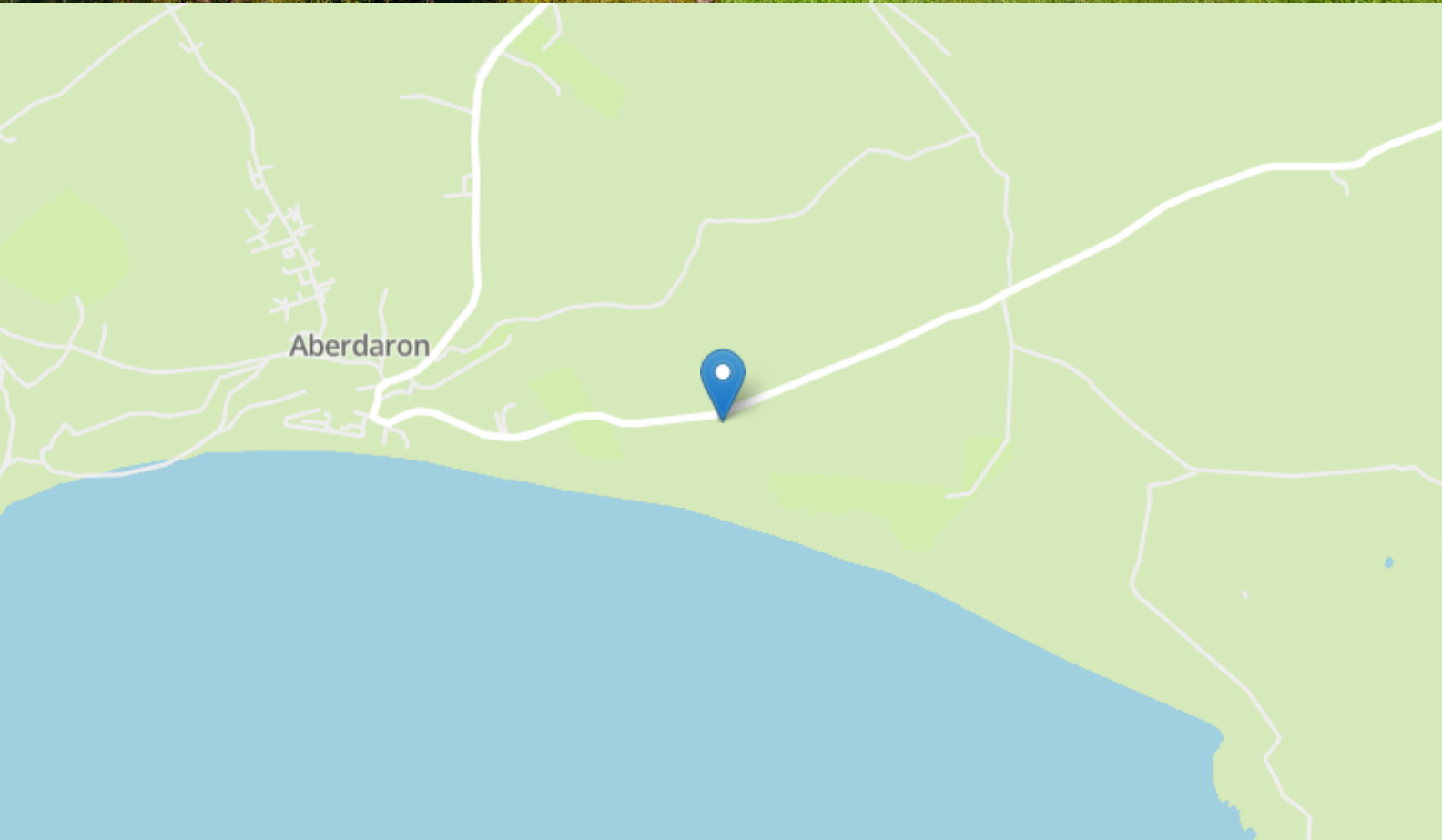
Viewing is strictly by appointment only with Elvins Estate Agents

Marketing Appraisal

Thinking of Selling? We are an independent estate agency and have experienced local property experts who can offer you a free marketing appraisal without obligation. It is worth remembering that we may already have a purchaser waiting to buy your home.

MISREPRESENTATION DISCLAIMER: Although our particulars are thought to be materially correct their accuracy cannot be guaranteed and they do not form part of any contract. They are intended as a guide only and purchasers must satisfy themselves by personal inspection. You may download, store and use the material for your own personal use and research. You may not republish, retransmit, redistribute or otherwise make the material available to any party or make the same available on any website.

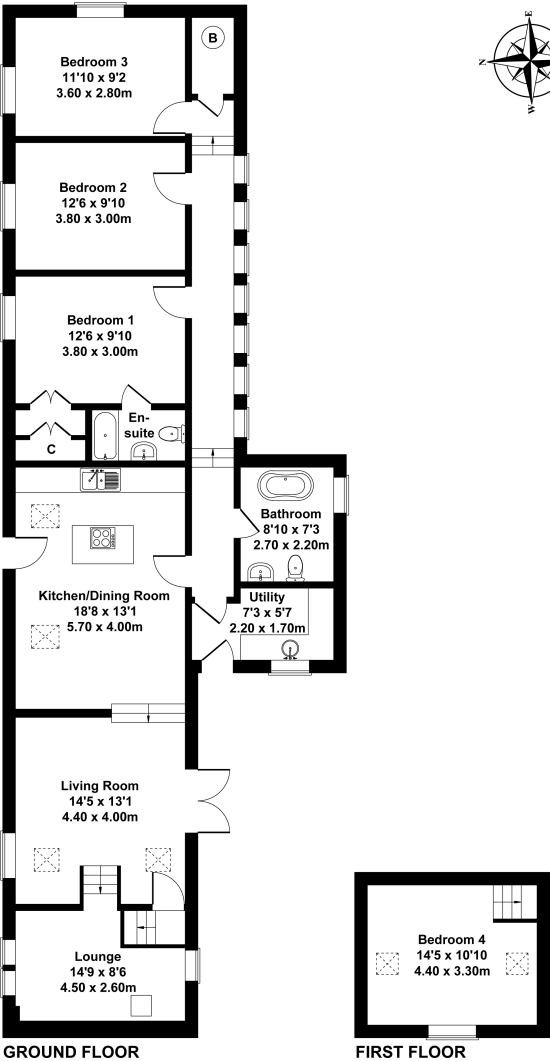
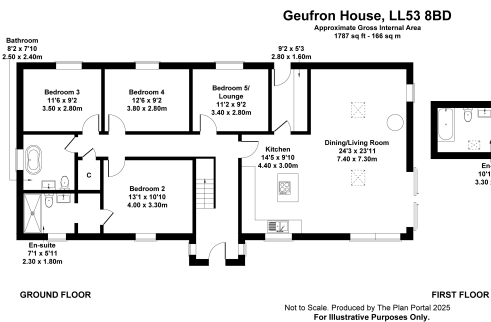




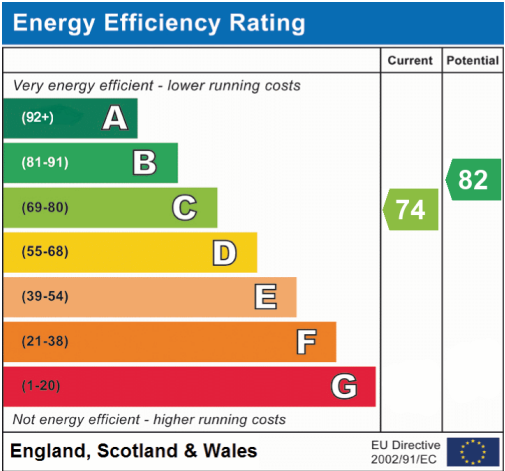
FLOORPLAN & EPC



Geufron Barn, LL53 8BD
Approximate Gross Internal Area
1464 sq ft - 136 sq m



Not to Scale. Produced by The Plan Portal 2025
For Illustrative Purposes Only.



Elvins Estate Agents
6 High Street, Abersoch, LL53 7DY
01758 712003
sales@elvinsestateagents.co.uk