



5 Fyning Place, Bexhill-on-Sea, East Sussex,  
TN39 4NQ

£600,000

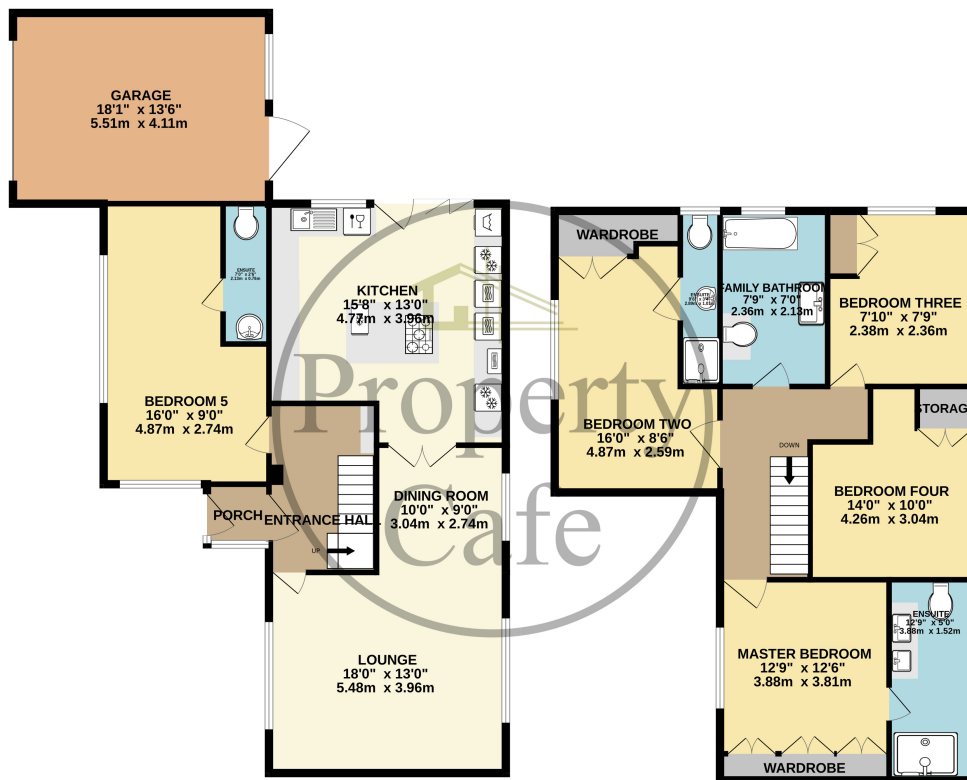


- A Beautifully Presented Family Home
- Enclosed Double Glazed Entrance Porch
- Large Dual Aspect Lounge.
- Separate Family Dining Area
- Fully Equipped Designer Kitchen
- Four Spacious First Floor Bedrooms
- Additional Ground Floor Bedroom & En Suite WC
- Master Bedroom With En-suite
- Large Garage With Remote Door
- Gas Central Heated & Double Glazed
- Block Paved Driveway
- Modern Fitted Family Bathroom
- Highly Sought After & Quiet Location
- Sold With No Onward Chain



**GROUND FLOOR**  
1166 sq.ft. (108.3 sq.m.) approx.

**1ST FLOOR**  
952 sq.ft. (88.4 sq.m.) approx.



Whilst every attempt has been made to ensure the accuracy of the floorplan contained here, measurements of doors, windows, rooms and any other items are approximate and no responsibility is taken for any error, omission or mis-statement. This plan is for illustrative purposes only and should be used as such by any prospective purchaser. The services, systems and appliances shown have not been tested and no guarantee as to their operability or efficiency can be given.  
Made with Metropix ©2023

