

3 Bedroom(s), Terraced House, To be Advised

Hampden Crescent, Lindholme, Doncaster.



- 3D Virtual Tour Available
- Three Bedroom Terraced Family Home
- Lounge
- Family Bathroom with Separate W/C
- Front Garden

- No Chain
- Kitchen
- Utility Space
- Rear Enclosed Garden
- Local Amenities

£139,950
For Sale

Book your viewing today Tel: 01302 247754

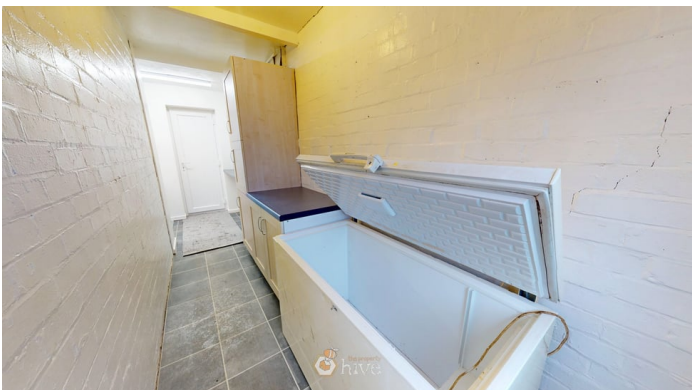
Owner's View

Situated on Hampden Crescent in the popular village of Lindholme, this three-bedroom terraced home is offered for sale with no onward chain, making it an ideal purchase for first-time buyers, families, or investors alike. The accommodation briefly comprises a spacious lounge providing a comfortable living space, along with a kitchen featuring a useful utility area offering additional storage and practicality. To the first floor are three well-proportioned bedrooms, a family bathroom, and the added convenience of a separate toilet. Externally, the property benefits from a front garden and a fully enclosed rear garden, ideal for outdoor seating or family use. Located close to local amenities and transport links, this home offers great potential in a well-connected area of Doncaster.

Ground Floor

Floor Plan

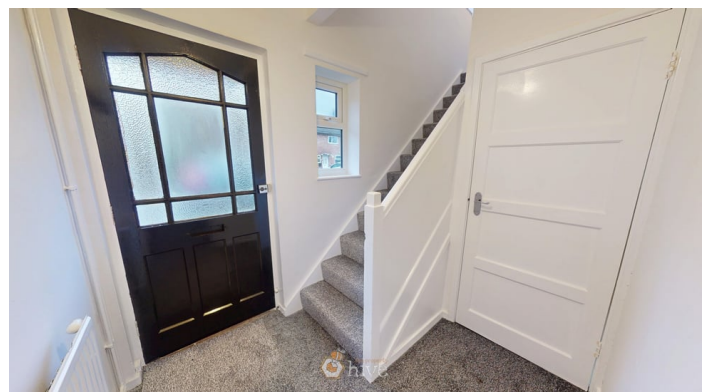
Kitchen & Utility Space



Lounge



Hallway



First Floor

Floor Plan

Master Bedroom



Bathroom & Separate W/C



Bedroom



Externals

Front Aspect



Bedroom



Rear Garden



Property Information

Council Tax Band - A

Utilities - Mains Gas, Mains Electricity, Mains Water

Water Meter -

Tenure -

Solar Panels -

Space Heating System -

Approximate Heating System Installation Date -

Water Heating System -

Approximate Water Heating Installation Date -

Boiler Location -

Approximate Electrical System Installation Date -

Permanent Loft Ladder -

Loft Insulation -

Loft Boarded out -

Whilst every effort is made to ensure that the information contained in these particulars is reliable, they do not constitute or form part of an offer or any contract. The Property Hive accept no liability for the accuracy of the contents, and therefore they should be independently verified by prospective buyers or tenants before agreeing an offer. All measurements provided are approximate and should be verified before exchange of contracts. No appliances, fixtures or fittings have been tested and should be checked by the buyer before exchange of contracts to ensure they are in good working order.

All measurements provided are approximate and should be verified before exchange of contracts. No appliances have been tested and should be checked to ensure they are in good working order.



We make it happen.

Tel: 01302 247754

Email: info@thepropertyhive.co.uk

Web: www.thepropertyhive.co.uk

Energy Performance Certificate