

# Woodcock Park

Warminster, BA12 9JB

COOPER  
AND  
TANNER



£125,000 Leasehold

🛏 2 🛋 2 🚿 1 EPC TBC

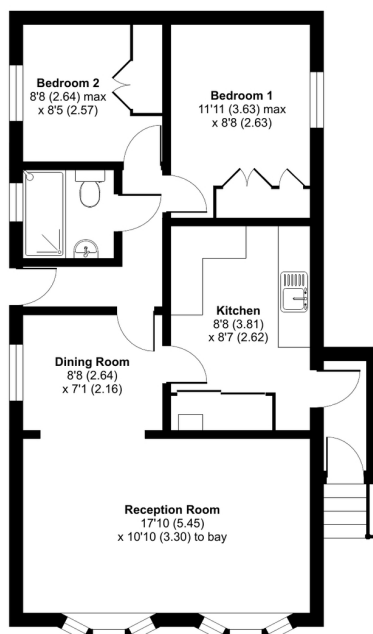
---

## Description

A spacious and well presented two bedroom park home that has been well maintained by the current owner and is situated close to local amenities. Outside a drive provides parking and gives access to the low maintenance gardens and sheds. In brief the accommodation comprises entrance porch leading into a large kitchen with a range of wall and base units, dining room and main reception room. There is an upgraded bathroom and two bedrooms, both with in built storage.

## Woodcock Park, Warminster, BA12

Approximate Area = 683 sq ft / 63.5 sq m  
For identification only - Not to scale



GROUND FLOOR

Floor plan produced in accordance with RICS Property Measurement 2nd Edition, incorporating International Property Measurement Standards (IPMS Residential). ©richrecom 2025. Produced for Cooper and Tanner. REF: 1387929



### Features

- Park Home
- Close to local amenities
- Two bedrooms
- Over 50's
- Retirement living
- Gas central heating
- Double glazed



### Local Information

- Council Tax Band A
- Tenure Leasehold
- EPC Rating TBC

#### WARMINSTER OFFICE

Telephone 01985 215579

48-50, Market Place, Warminster, Wiltshire BA12 9AN

[warminster@cooperandtanner.co.uk](mailto:warminster@cooperandtanner.co.uk)

**COOPER  
AND  
TANNER**

Important Notice: These particulars are set out as a general outline only for the guidance of intended purchasers and do not constitute, nor constitute part of, an offer or contract. All descriptions, dimensions, reference to condition and necessary permissions for use and occupation, warranties and other details are given without responsibility and any intending purchasers should not rely on the same as statements or representations of fact but must satisfy themselves by inspection or otherwise as to the correctness of each of them.

