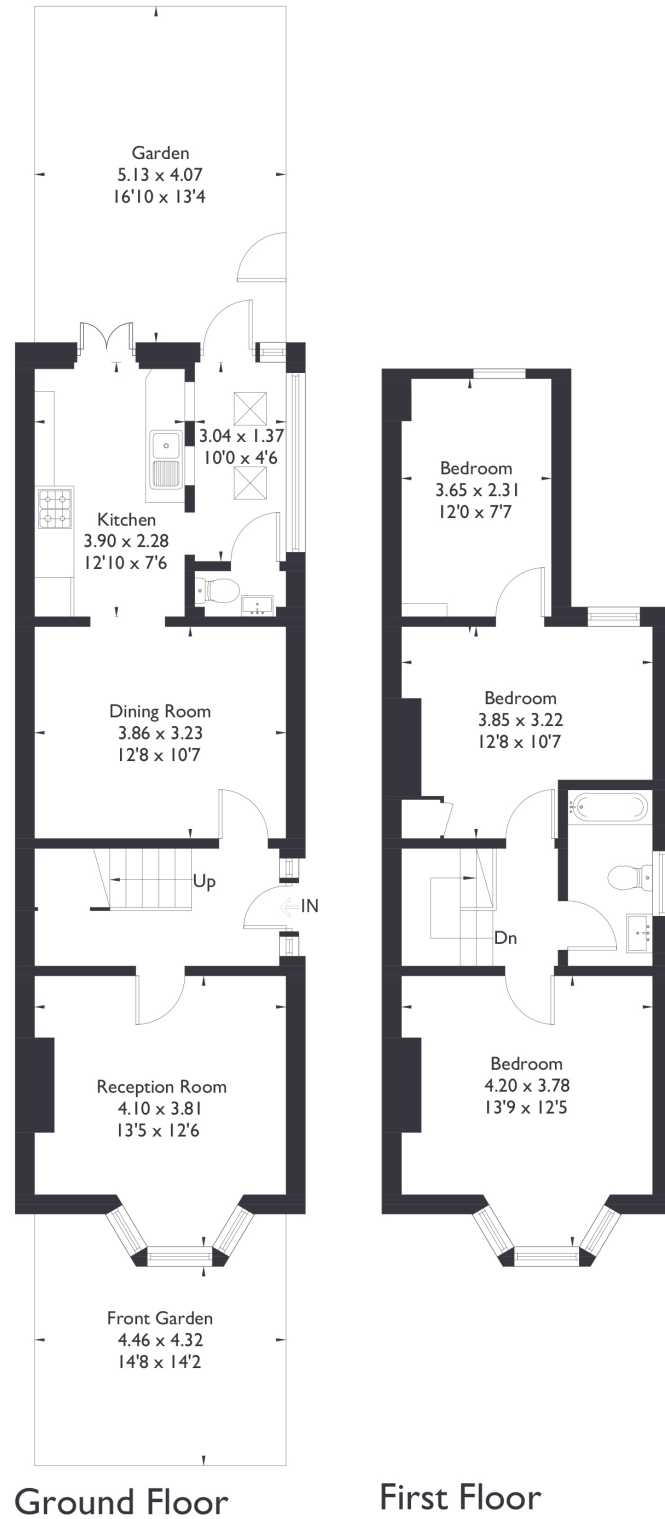


Northcroft Road , W13

Approximate Floor Area = 93.7 sq m / 1008 sq ft



2/3 BEDROOM HOUSE

Northcroft Road, W13

£775,000

Welcome to this unique and spacious two/three bedroom, one bathroom house with the added convenience of a downstairs WC. Upon entry you'll find a central staircase leading to the upper floor. Downstairs you are greeted by two generously sized rooms on either side. To the right, a cosy living area seamlessly connects to a well appointed kitchen/utility room, with two doors providing access to the sizable garden, complete with a convenient side entrance.

FEATURES

- Three Bedrooms
- One Bathroom/ Downstairs W/C
- Kitchen/Living Space
- Separate Reception Room
- On-Street Parking
- Fielding Primary School
- EPC Rating D.





2/3 BEDROOM HOUSE

## Northcroft Road, W13

Upstairs, you'll discover large rooms, including one with a through room. Whether you envision it as a nursery, a walk in wardrobe, or an additional bedroom, the flexibility is yours to explore. Completing this floor is a family bathroom. This property presents exciting potential, with the opportunity to extend into the loft STPP. The property's location is situated in close proximity to the highly rated Fielding Primary School. Additionally, it's just a short 10 min walk to Northfields amenities and Northfields station. EPC Rating D.

