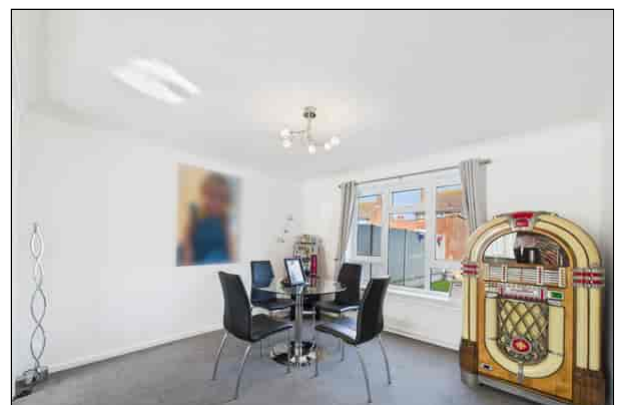
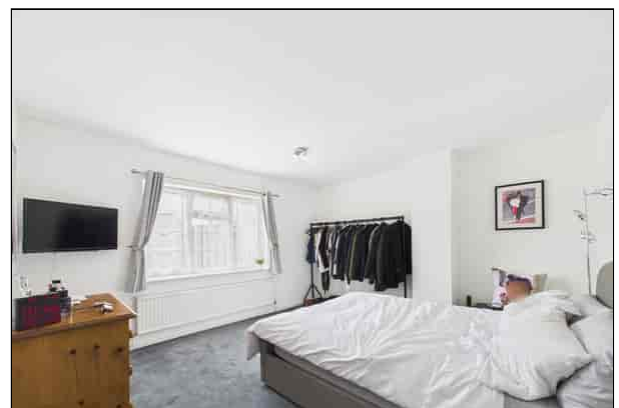




Canterbury Road, Margate

£360,000

- Three Bedrooms
- Semi-Detached House
- Well Appointed & Spacious Living Accommodation
- 25'7" Double Aspect Lounge/Diner
- Driveway for Multiple vehicles & Garage
- Welcoming Entrance Hall
- Close to all Local Amenities & Train Station
- 41'4" Rear Garden



Terence Painter

ESTATE AGENTS