

Stag Way

Glastonbury, BA6 9PR

COOPER
AND
TANNER



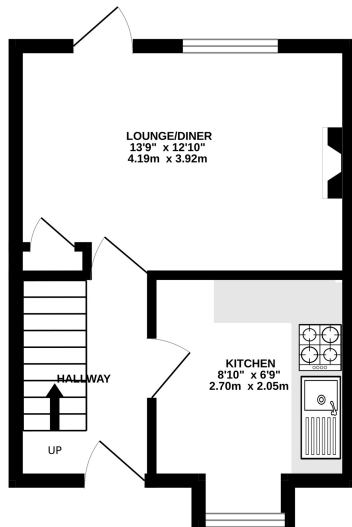
£239,950 Freehold

2 1 1 EPC D

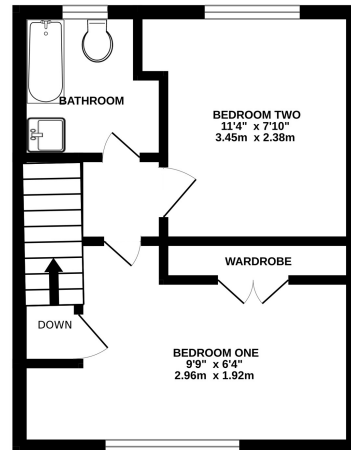
Description

This two bedroom terraced home features a south westerly facing garden and enjoys views of Wearyall Hill, in addition to two off road parking spaces. It is an ideal choice for first-time buyers or those looking for a move-in ready home. The property is in good decorative condition and includes an entrance hall, a spacious lounge/diner with a southerly aspect and garden access, a kitchen with space and plumbing for white goods, two bedrooms (one with built-in storage) and a family bathroom. The low-maintenance rear garden enjoys sun throughout the day and benefits from gated pedestrian access.

GROUND FLOOR



FIRST FLOOR



Whilst every attempt has been made to ensure the accuracy of the floorplan contained here, measurements of doors, windows, rooms and any other items are approximate and no responsibility is taken for any error, omission or mis-statement. This plan is for illustrative purposes only and should be used as such by any prospective purchaser. The services, systems and appliances shown have not been tested and no guarantee as to their operability or efficiency can be given.
Made with Metropix ©2025



Features

- South westerly facing garden
- Two allocated parking spaces
- Well proportioned lounge with good amount of light
- Popular edge of Town, Millstream development with various walking routes into Town
- Views towards Wearyall Hill
- Main bedroom includes a fitted storage cupboard
- Freehold - Council Tax Band B

Local Information

- Council Tax Band B
- Tenure Freehold
- EPC Rating D

GLASTONBURY OFFICE

Telephone 01458 831077

41, High Street, Glastonbury, Somerset BA6 9DS

glastonbury@cooperandtanner.co.uk

**COOPER
AND
TANNER**

Important Notice: These particulars are set out as a general outline only for the guidance of intended purchasers and do not constitute, nor constitute part of, an offer or contract. All descriptions, dimensions, reference to condition and necessary permissions for use and occupation, warranties and other details are given without responsibility and any intending purchasers should not rely on the same as statements or representations of fact but must satisfy themselves by inspection or otherwise as to the correctness of each of them.

