

2 Bedroom(s), Semi-Detached House, Freehold

Aintree Avenue, Cantley, Doncaster.



- 3D Virtual Tour Available
- Semi Detached Family Home
- Spacious Lounge
- Two Double Bedrooms
- Driveway Allowing for Off Road Parking

- No Chain
- Kitchen
- Family Bathroom
- Rear Enclosed Garden
- Popular Location in Cantley

£140,000
For Sale

Book your viewing today Tel: 01302 247754

Owner's View

A lovely first home, in a very quiet location. Not over looked and very close to green spaces. Such as Cantley Park and Sandal beat woods. A brand new boiler and 4 new radiators installed and also a new bathroom fitted. Both less than 2 years old.

Ground Floor

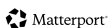
Floor Plan



FLOOR 1

GROSS INTERNAL AREA
FLOOR 1: 35.7 m² FLOOR 2: 35.4 m²
EXCLUDED AREAS: TERRACE 12.2 m² PATIO 4.5 m²
TOTAL: 71.1 m²

SIZES AND DIMENSIONS ARE APPROXIMATE, ACTUAL MAY VARY



Lounge

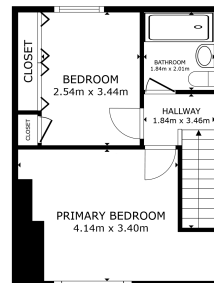


Kitchen



First Floor

Floor Plan



FLOOR 2

GROSS INTERNAL AREA
FLOOR 1: 35.7 m² FLOOR 2: 35.4 m²
EXCLUDED AREAS: TERRACE 12.2 m² PATIO 4.5 m²
TOTAL: 71.1 m²

SIZES AND DIMENSIONS ARE APPROXIMATE, ACTUAL MAY VARY



First Bedroom



Second Bedroom



Bathroom



External

Front Aspect



Rear Garden



Property Information

Council Tax Band - A

Utilities - Mains Gas, Mains Electricity, Mains Water

Water Meter - No

Tenure - Freehold

Solar Panels - No

Space Heating System - Gas Boiler with radiators

Approximate Heating System Installation Date -

Water Heating System - Gas boiler (Combi)

Approximate Water Heating Installation Date -

Boiler Location -

Approximate Electrical System Installation Date -

Permanent Loft Ladder - Yes

Loft Insulation - Yes

Loft Boarded out – No

Whilst every effort is made to ensure that the information contained in these particulars is reliable, they do not constitute or form part of an offer or any contract. The Property Hive accept no liability for the accuracy of the contents, and therefore they should be independently verified by prospective buyers or tenants before agreeing an offer. All measurements provided are approximate and should be verified before exchange of contracts. No appliances, fixtures or fittings have been tested and should be checked by the buyer before exchange of contracts to ensure they are in good working order.

Energy Performance Certificate

