

Woodcock Street

Castle Cary, BA7 7BJ

COOPER
AND
TANNER



£150,000 Leasehold

A one-bedroom first floor flat, conveniently located for Castle Cary Town Centre. Perfect for a first time buyer or investors looking to increase their portfolio.

Woodcock Street
Castle Cary
BA7 7BJ

 1  1  1 EPC D

£150,000 Leasehold

DESCRIPTION

This attractive one-bedroom first floor apartment offers a superb opportunity for buyers seeking a home in excellent condition, just a short walk from Castle Cary town centre. Recently redecorated throughout, the apartment presents a fresh and modern interior with neutral tones, ready for immediate occupation. The accommodation comprises a bright and welcoming living room with front and rear aspect windows and a beautiful feature fireplace (non functioning), a well-proportioned double bedroom, a fitted kitchen with ample storage, and a well appointed bathroom. Positioned on the first floor, the property benefits from good natural light and a pleasant outlook. Its location provides easy access to local shops, cafés, and transport links, making it ideal for first-time buyers, downsizers, or investors alike. With no onward chain, this apartment is available for a swift and straightforward purchase.

SERVICES

The property benefits from gas fired central heating. The property is connected to mains gas, electric, water and drainage. There is one allocated parking space as well as visitor parking and the property has 968 years remaining on the lease with a share of the freehold.

VIEWING ARRANGMENTS

Viewing to be arranged through Cooper and Tanner Castle Cary, 01963350327

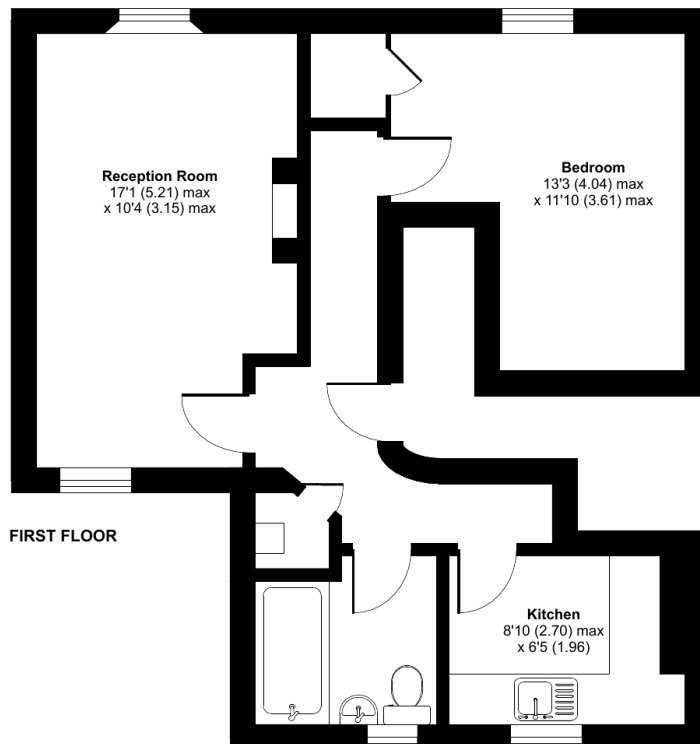




Woodcock Street, Castle Cary, BA7

Approximate Area = 517 sq ft / 48 sq m

For identification only - Not to scale



 Floor plan produced in accordance with RICS Property Measurement 2nd Edition, Incorporating International Property Measurement Standards (IPMS2 Residential). © nitchcom 2025. Produced for Cooper and Tanner. REF: 1388668

CASTLE CARY OFFICE

Telephone 01963 350327

Fore Street, Castle Cary, Somerset BA7 7BG

castlecary@cooperandtanner.co.uk

**COOPER
AND
TANNER**

Important Notice: These particulars are set out as a general outline only for the guidance of intended purchasers and do not constitute, nor constitute part of, an offer or contract. All descriptions, dimensions, reference to condition and necessary permissions for use and occupation, warranties and other details are given without responsibility and any intending purchasers should not rely on the measurements or representations of fact but must satisfy themselves by inspection or otherwise as to the correctness of each of them.

