



13 Spring Road, Clifton, Shefford, Bedfordshire, SG17 5RE

£475,000 Freehold













# Step Inside

Spring Road

---



# About Shefford

Spring Road

---

Abt. 21' 9" x 11' 5" (6.63m x 3.48m) Double doors leading to garden. Dual aspect. Fireplace. Fitted curtains.











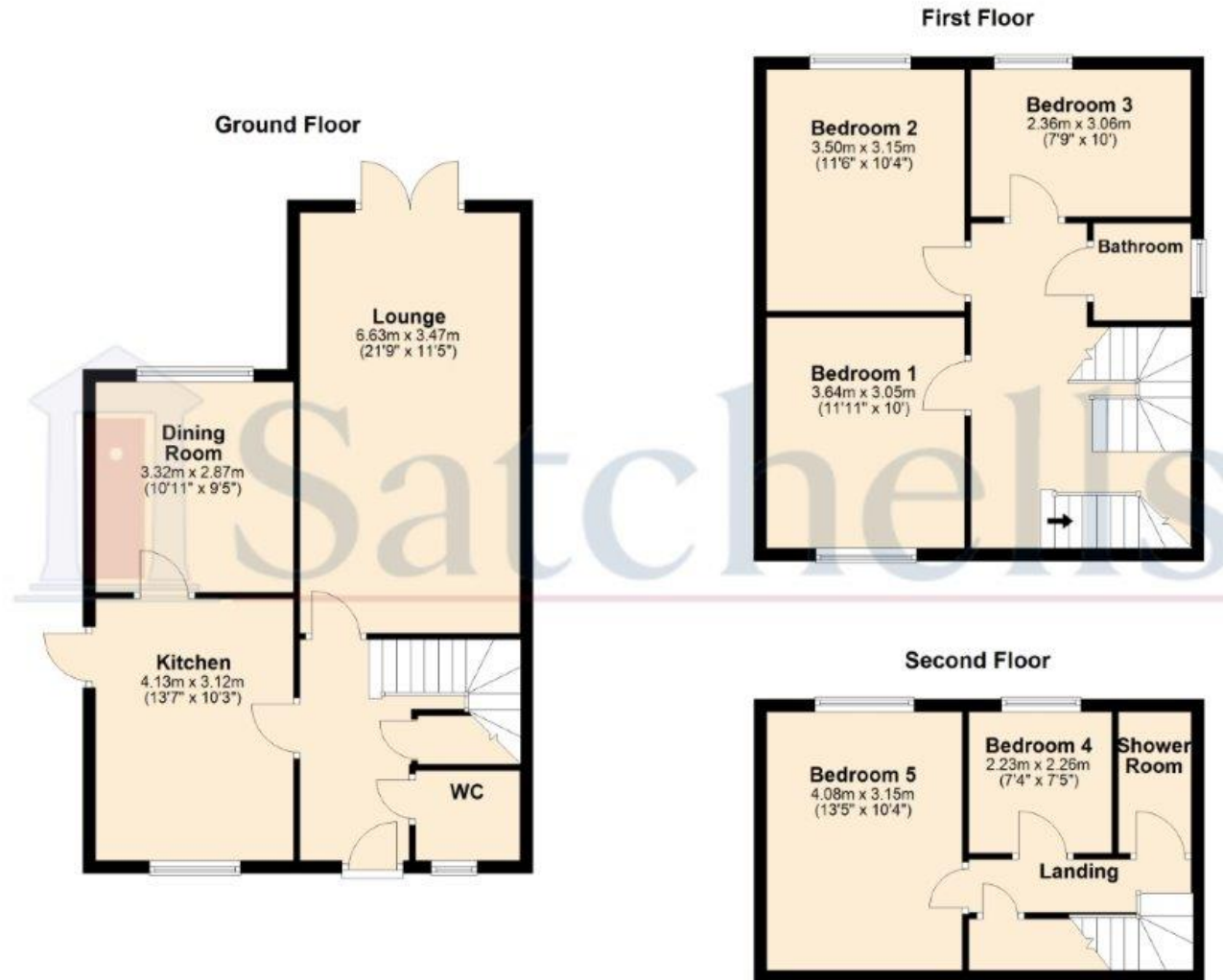
# Step Outside

## Spring Road

Abt. 13' 7" x 10' 3" (4.14m x 3.12m) Fitted worktops with a range of integrated goods. Side access to garden and entrance to dining room.







For illustrative purposes only - NOT TO SCALE - Measurements shown are approximate. The size and position of doors, windows, appliances and other features are approximate.  
Plan produced using PlanUp.



Satchells  
18-20, High Street, Shefford, Bedfordshire, SG17 5DG  
Tel: 01462 813235  
E: [shefford@satchells.co.uk](mailto:shefford@satchells.co.uk) [www.satchells.com](http://www.satchells.com)

