



GB



28 Brookside Avenue, Ashford, Surrey TW15 3LX
Offers in excess of £450,000 - Freehold



PROPERTY DESCRIPTION

OPEN DAY – 24th January | 12:00–2:00 PM – By Appointment Only.

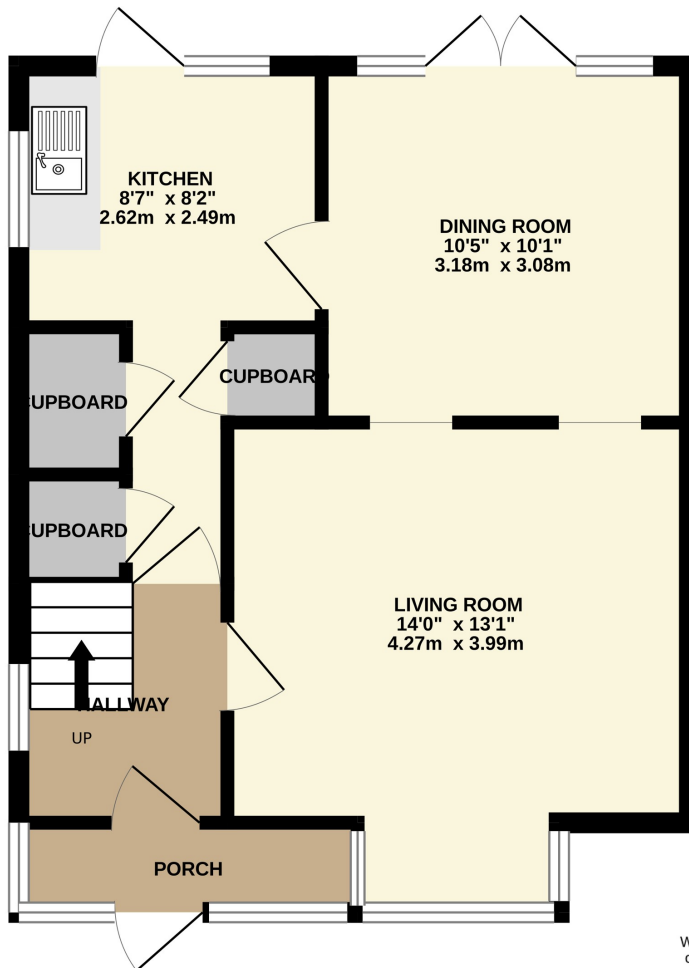
Book your appointment to view this three-bedroom semi-detached house, offered to the market with no onward chain. While the property is in need of refurbishment, it benefits from a boiler installed approximately 24 months ago and replacement double-glazed windows, providing a solid starting point for improvement. The accommodation comprises two good-sized reception rooms with doors opening onto the rear garden, a kitchen, three bedrooms, and a family bathroom. Located in a quiet cul-de-sac, the property is within a short walk of local bus routes and Ashford train station, offering excellent commuter links to London Waterloo (approximately 35 minutes). An excellent opportunity for buyers looking to modernise and add value. Early viewing is strongly recommended.

POINTS OF INTEREST

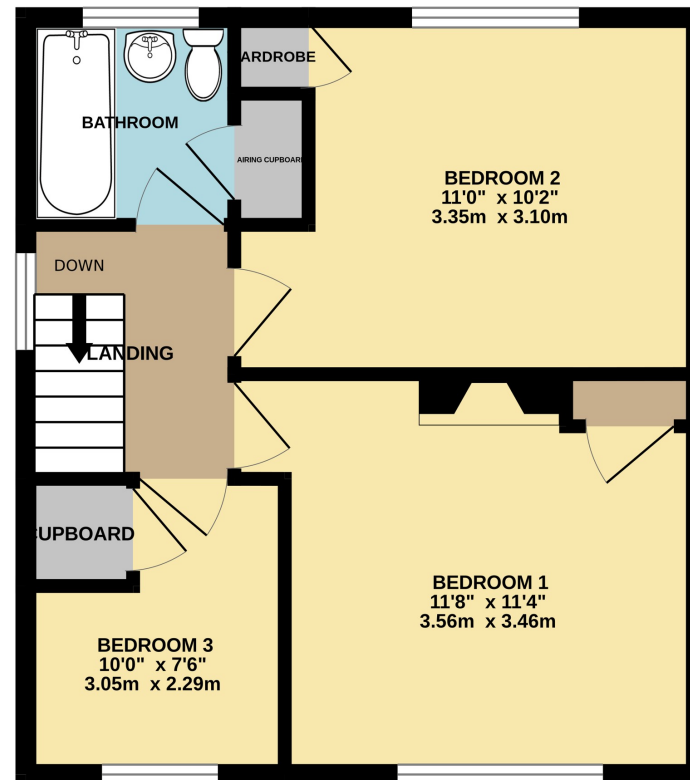
- Open day 24th Jan 12-2pm
- No onward chain
- Two reception rooms
- Replacement double glazed windows
- Refurbishment required
- Semi detached house
- Boiler 24 months old



GROUND FLOOR
446 sq.ft. (41.5 sq.m.) approx.



1ST FLOOR
403 sq.ft. (37.4 sq.m.) approx.



TOTAL FLOOR AREA : 849 sq.ft. (78.9 sq.m.) approx.

Whilst every attempt has been made to ensure the accuracy of the floorplan contained here, measurements of doors, windows, rooms and any other items are approximate and no responsibility is taken for any error, omission or mis-statement. This plan is for illustrative purposes only and should be used as such by any prospective purchaser. The services, systems and appliances shown have not been tested and no guarantee as to their operability or efficiency can be given.

Made with Metropix ©2026