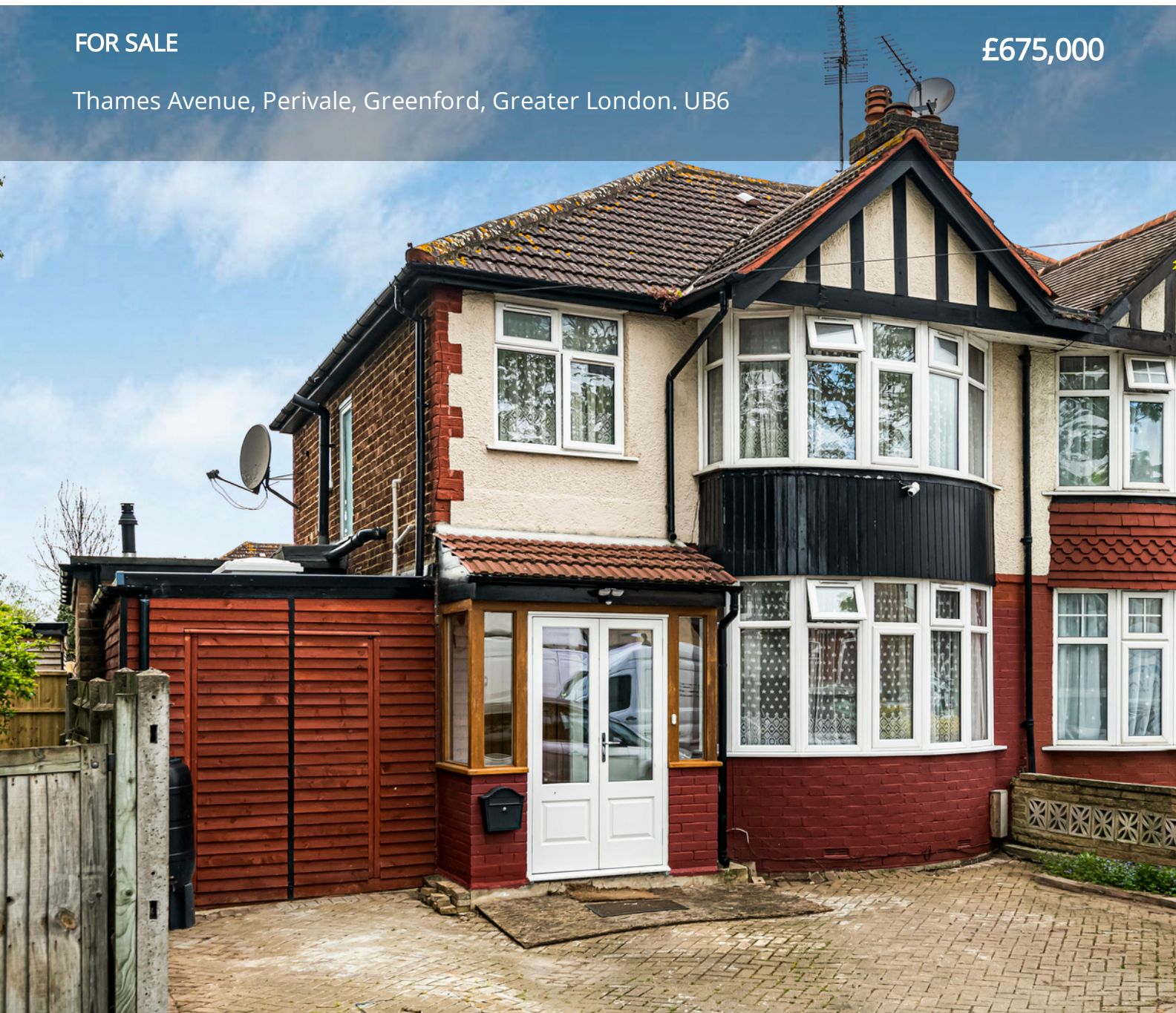


FOR SALE

£675,000

Thames Avenue, Perivale, Greenford, Greater London. UB6



Peter Gamble & Co. offer to the market this well extended 4 bedroom, 2 bathroom semi-detached home.

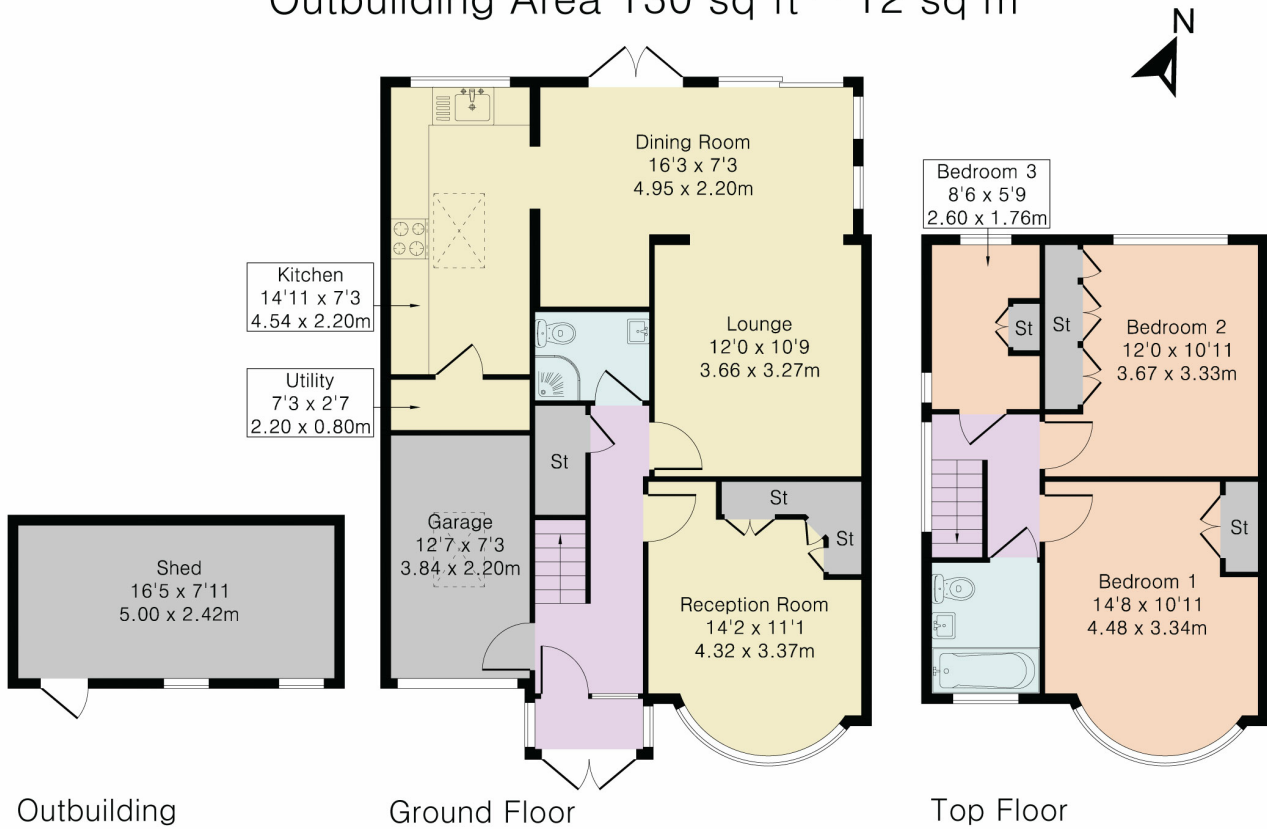
Offered to the market for chain free sale, the property features a large wraparound side and rear extension incorporating large kitchen diner, two separate ground floor reception rooms and integral garage along with the downstairs toilet and shower and to the first floor are the three bedrooms and family bathroom.

To the front the property has parking for up to 3 vehicles and also features a large storage shed to the rear of the garden and garage to the side..





Approximate Gross Internal Area 1342 sq ft – 125 sq m
 Ground Floor Area 796 sq ft – 74 sq m
 Top Floor Area 416 sq ft – 39 sq m
 Outbuilding Area 130 sq ft – 12 sq m



Although Pink Plan Ltd ensures the highest level of accuracy, measurements of doors, windows and rooms are approximate and no responsibility is taken for error, omission or misstatement. These plans are for representation purposes only as defined by RICS code of measuring practise. No guarantee is given on total square footage of the property within this plan. The figure icon is for initial guidance only and should not be relied on as a basis of valuation.

