



Hurdlesgrove House
Whitchurch
Buckinghamshire
HP22 4EJ

£2,345,000

bettermove

Bettermove are proud to introduce Hurdlesgrove House, an exquisite 18th-century residence nestled in the prestigious neighbourhood of Whitchurch. This impressive property boasts a perfect blend of period charm and modern amenities, offering a truly exceptional living experience.

Spread across 3,000 sq ft, Hurdlesgrove House offers ample space for you and your family to create lasting memories. Step inside and you'll be greeted by three spacious reception rooms, ideal for entertaining guests or enjoying quality time with loved ones. The six bedrooms provide plenty of room for everyone, while the four fully renovated bathrooms, including a retreat-style master ensuite with two dressing rooms, ensure comfort and luxury for all.

Beyond the stunning interior, this estate presents a wealth of additional features. Enjoy the convenience of a large and spacious gym, perfect for maintaining an active lifestyle. Indulge in the atmosphere of an English-style pub, offering a unique space to relax and unwind. The property also includes numerous outbuildings, stables, garaging, and grounds spanning an impressive 12.59 acres. It also has a cellar which contains a secondary full-size kitchen and wine cellar the kitchen also has an aga and the dining area with large open fireplace.

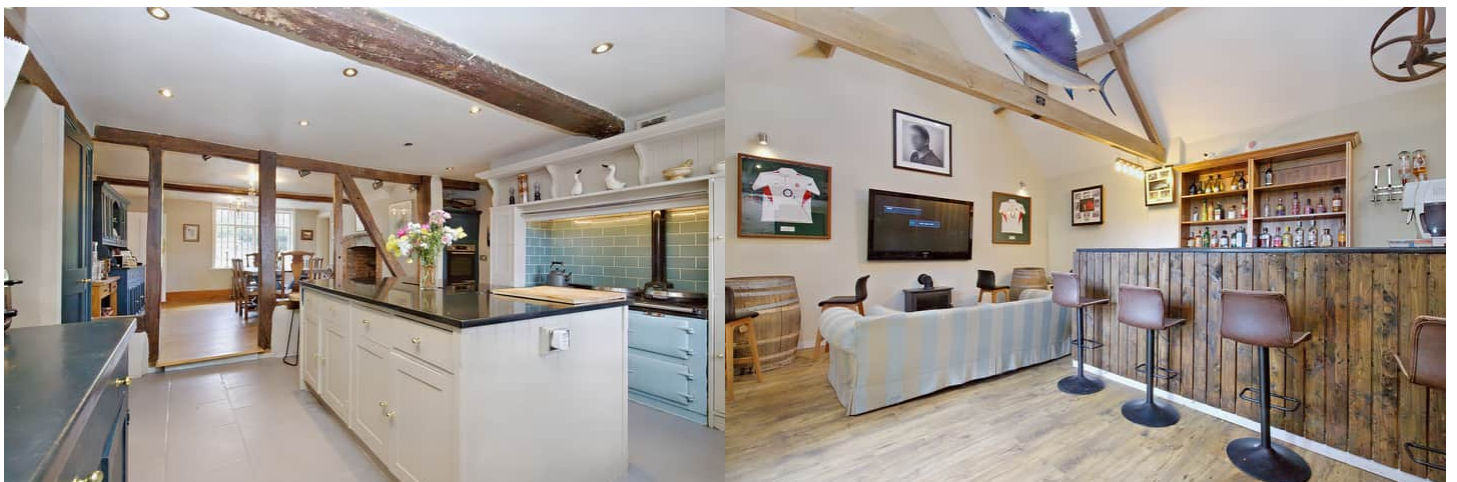
Boasting oil central heating throughout, Hurdlesgrove House ensures a comfortable living environment all year-round. The private driveway leading to the garages provides ample off-street parking, adding convenience to your daily routine.

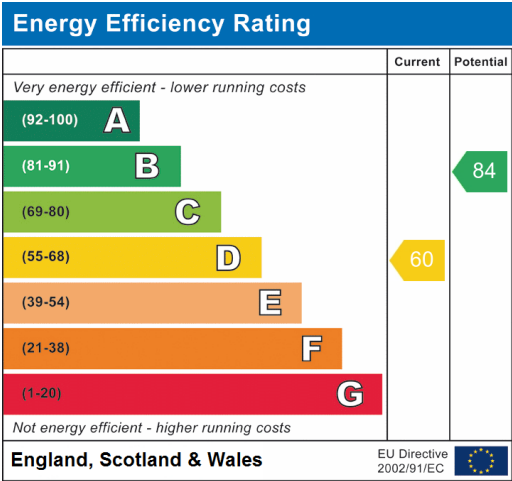
Situated in Buckingham in an area of outstanding natural beauty in Chiltern hills, Hurdlesgrove House offers the best of both worlds. Experience the tranquillity and privacy of the expansive estate while being just a short distance away from the vibrant town centre. Here, you'll find an array of amenities, reputable schools, and excellent transport links, ensuring a convenient and well-connected lifestyle.

Don't miss out on this unparalleled opportunity to own a truly remarkable property. Contact our estate agents at Bettermove on 0330 004 0050 to arrange a viewing and make Hurdlesgrove House your new home.

You can secure the purchase today by paying an exclusivity fee of £1,000 which gives you the rights to purchase within a given timeframe.

During this timeframe, the seller has the right to offer the property to any other buyer, but you have the right to purchase the property within the given timeframe.







20-22 Bridge End, Leeds, LS1 4DJ
t: 0330 004 0050 e: hello@bettermove.co.uk
www.bettermove.co.uk