

Waldorf Apartments Flat 37 Sandgate Road

Folkestone
CT20 2EE

£220,000 LEASEHOLD

FOR SALE WITH BURNAP + ABEL... Welcome to your new home in the Waldorf Apartments, where convenience and comfort come together in perfect harmony. This 2-bedroom apartment offers a spacious lounge/diner, modern kitchen, and family bathroom. The master bedroom boasts an en-suite for added privacy and convenience. Situated in the heart of Folkestone Town Centre, this desirable property also includes an allocated parking space and a lift within the building for easy access. With no chain attached, you can move in hassle-free and start enjoying all that this vibrant neighbourhood has to offer. Don't miss out on the opportunity to make Waldorf Apartments your new address - schedule a viewing today!



Entrance Hall

Lounge/Dining Room

14' 6" x 13' 5" (4.42m x 4.09m)

Kitchen

9' 9" x 9' 5" (2.97m x 2.87m)

Bathroom

7' 7" x 5' 10" (2.31m x 1.78m)

Bedroom One

18' 6" x 11' 4" (5.64m x 3.45m)

En-Suite

Bedroom Two

11' 10" x 7' 9" (3.61m x 2.36m)

Allocated Parking Space

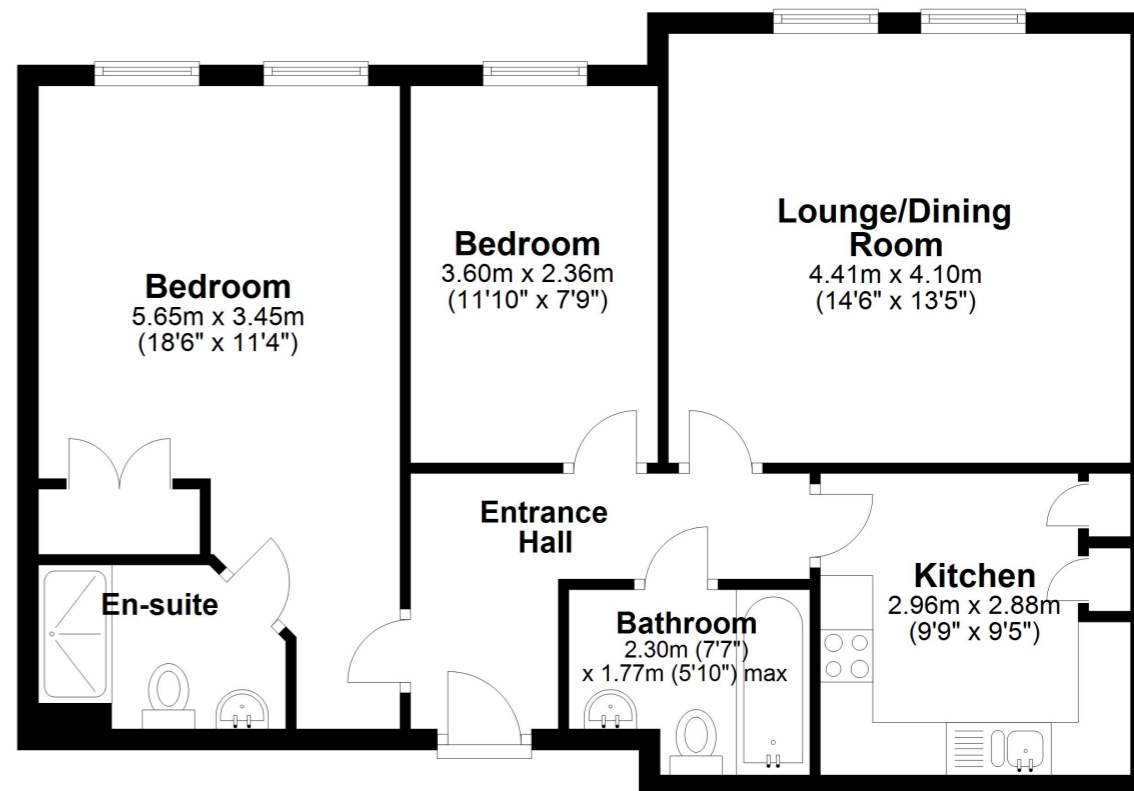
Lease + Service Charges

We understand the lease has 82 years remaining.

The service charge is approximately £2500 per annum.

The ground rent is currently £400 per annum.

Fourth Floor
Approx. 68.9 sq. metres (741.2 sq. feet)



Whilst every attempt has been made to ensure the accuracy of the floor plan contained here, measurements of doors, windows, rooms and any other items are approximate and no responsibility is taken for any error, omission or mis-statement. This plan is for illustrative purposes only and should be used as such by any prospective purchaser.
Plan produced using PlanUp.

