

FOR SALE

Askew Crescent,
Shepherd's Bush, W12

Terraced House
Askew Village

£1,100,000 fh

3  2  2 

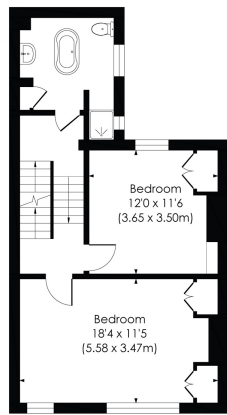


**horton
andgarton**

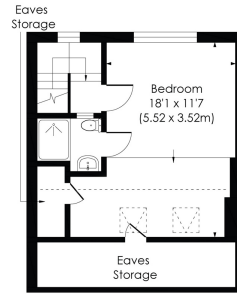
SALES / LETTINGS / PROPERTY MANAGEMENT

hortonandgarton.co.uk | Sales 020 8819 0510 | Lettings 020 8819 0511
172 King Street, Hammersmith, W6 0QU

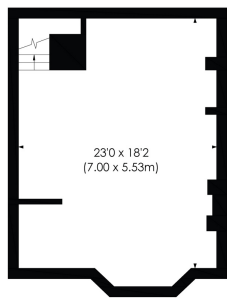




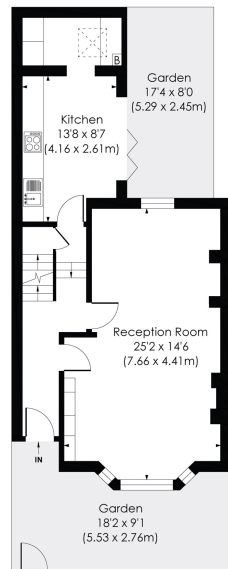
FIRST FLOOR



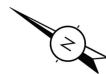
SECOND FLOOR



LOWER GROUND FLOOR



GROUND FLOOR



ASKEW CRESCENT, W12

Approx. Gross Internal Floor Area

1531 Sq' / 142.25 SqM (Including Reduced Height, Excluding Lower Ground Floor)

1374 Sq' / 127.65 SqM (Excluding Reduced Height, Excluding Lower Ground Floor)

© Pixangle Property Marketing Ltd. info@pixangle.com Tel: 0208 870 2118



This floor plan has been prepared for the purpose of illustration only in accordance with the latest RICS code of measuring practice and is not to scale. All measurements and areas are approximate and whilst every effort has been made to ensure the accuracy of the plan contained here, no responsibility is taken for any error, omission or misstatement.



Victorian family house | Three bedrooms - Two bathrooms | 1374 Sq' - 127.65 SqM | Superbly presented throughout | EPC rating E | Shepherd's Bush



hortonandgarton.co.uk

Sales 020 8819 0510

Lettings 020 8819 0511

172 King Street, Hammersmith, W6 0QU