



11 Terminus Road, Bexhill-on-Sea, East Sussex, TN39 3LP
Immaculate Two Bedroom End Terrace Family Home In Sought After Town Centre Location v £315,000





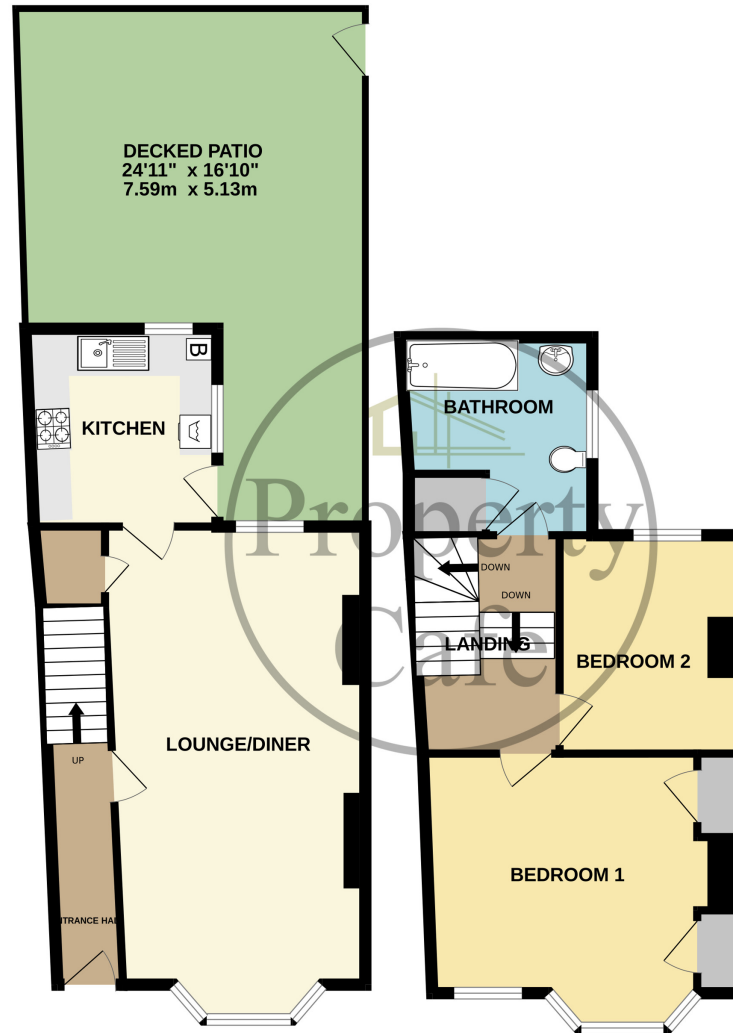
The Property Café is delighted to offer for sale this Spacious Two Bedroom End Terrace Family Home Situated In The Heart Of Bexhill Town Centre * Accommodation & Benefits Include: An Immaculate End Of Terrace Family Home * Good Size Inner Hallway * Two Spacious Double Bedrooms * A Spacious Dual Aspect Lounge-Diner * Modern Fitted Kitchen & Bathroom * Central Heated & Double Glazed * Good Size Loft Space With Potential * Low Maintenance Decked Rear Garden * Residents Parking Zone Area * Close To Town Centre & Seafront * Rear Pedestrian Access To Reginald Rd * Internal Viewing Highly Recommended *

Location: The property is situated within easy walking distance of Bexhill Town Centre which offers an excellent range of independent shops and amenities serving the local residents. Within the Town Centre you will find all the shops general facilities that you may need daily, most are independently owned and have been in existence for many years but of course there are also some excellent main shopping facilities. You will find an excellent Doctors surgery, various dentist, excellent local pubs and restaurants, a main pharmacy & main post office. There is a regular bus services close by with services to Eastbourne and Hastings and both Collington & Bexhill Mainline stations are also close by providing excellent direct services routes to Gatwick, Ashford International & Central London.



GROUND FLOOR
425 sq.ft. (39.5 sq.m.) approx.

1ST FLOOR
424 sq.ft. (39.4 sq.m.) approx.



TOTAL FLOOR AREA : 849 sq.ft. (78.9 sq.m.) approx.

Whilst every attempt has been made to ensure the accuracy of the floorplan contained here, measurements of doors, windows, rooms and any other items are approximate and no responsibility is taken for any error, omission or mis-statement. This plan is for illustrative purposes only and should be used as such by any prospective purchaser. The services, systems and appliances shown have not been tested and no guarantee as to their operability or efficiency can be given.
Made with Metropix ©2024





The Property Café is delighted to offer for sale this Spacious Two Bedroom End Terrace Family Home Situated In The Heart Of Bexhill Town Centre * Accommodation & Benefits Include: An Immaculate End Of Terrace Family Home * Good Size Inner Hallway * Two Spacious Double Bedrooms * A Spacious Dual Aspect Lounge-Diner * Modern Fitted Kitchen & Bathroom * Central Heated & Double Glazed * Good Size Loft Space With Potential * Low Maintenance Decked Rear Garden * Residents Parking Zone Area * Close To Town Centre & Seafront * Rear Pedestrian Access To Reginald Rd * Internal Viewing Highly Recommended * Please Call Our Bexhill Sales Team On 01424 224488.





At Property Café we believe it important to give clear and straight forward advice to both buyers and sellers alike. Whilst we believe the internet is truly amazing we also believe there is still no substitute for meeting you in person; with this in mind we have developed a unique lounge style environment that allows you the time and space to discuss your requirements with us in detail and enjoy your property search in comfort. Our trained consultants look forward to meeting you.

- Immaculate End Of Terrace Family Home
 - Good Size Inner Hallway
 - Two Spacious Double Bedrooms
- Spacious Dual Aspect Lounge-Diner
- Modern Fitted Kitchen & Bathroom
- Central Heated & Double Glazed

- Good Size Loft Space With Potential
- Low Maintenance Decked Rear Garden
 - Residents Parking Zone Area
- Close To Town Centre & Seafront
- Rear Pedestrian Access To Reginald Rd
- Internal Viewing Highly Recommended