

FOR SALE

£475,000 Leasehold (to be confirmed)



Davis & Gibbs

Metro Central Heights, Elephant And Castle. SE1 6BB

Oval Branch
36, Brixton Road, London, SW9 6BU

02078207950
info@davisandgibbs.com

ABOUT THE PROPERTY

In the heart of Elephant and Castle, excellently located for the tube, this fabulous two bed, two bath apartment found on the ground floor of the prestigious Metro Central Heights development.

The apartment benefits from a large master bedroom with built-in storage and an en-suite, a second bedroom that could be used as a home office or study. The open plan reception room is light and spacious and features a small wall separating the lounge area from the kitchen. Located off of the hallway is the family bathroom with a shower over the bath and the property also offers lots of storage space throughout.

Council Tax - Southwark Band D - £1692.92

EPC - D - 65

The building boasts a grand reception area complete with 24 hour concierge, gym and pretty courtyards. Elephant and Castle has undergone a complete regeneration in recent years with many new developments finished and up for sale, it has quickly become a new, popular and quirky place to purchase with this apartment at a snippet of the price. Surrounded by restaurants, shopping facilities and travel links and comes with a healthy lease. Viewings are a must!

FEATURES

- EPC - D - 65
- Council Tax - Southwark Band D
- Amazing Transport Links
- 24hr Concierge
- Access To Gym And Swimming Pool
- Chain Free
- Two Bedroom Apartment
- Iconic Building



ROOM DESCRIPTIONS

Reception Room - 4.65m x 3.81m (15' 3" x 12' 6")

Open plan reception room with windows along one wall bathing the room in plenty of natural light. Great space to entertain and relax. The room has enough space for a dining area and the kitchen is separated slightly but a low wall.

Kitchen - 2.84m x 1.65m (9' 4" x 5' 5")

Located in the reception room. The kitchen is semi open plan within its own alcove. There is plenty of space for under counter units and has plenty of storage throughout.

Bathroom

The main Bathroom is situated off of the hallway entrance. it features both a bath and shower and is the largest of to in the property

Bedroom 1 - 4.32m x 3.58m (14' 2" x 11' 9")

Bedroom one is the master bedroom. It is comprised of a large wardrobe with plenty of storage space is a great size double room and features it's on en-suite.

Bedroom 2 - 2.69m x 2.16m (8' 10" x 7' 1")

Bedroom two is a good size with space for a double bed and wardrobe and desk. could also be used as great home office.

Courtyard - Metro Central Heights

The building complex also features a shared outside courtyard space. A great space in the sunshine with lots of areas for seating and also features a pond. The residents of the building also have access to a swimming pool and gym located in the North Block.

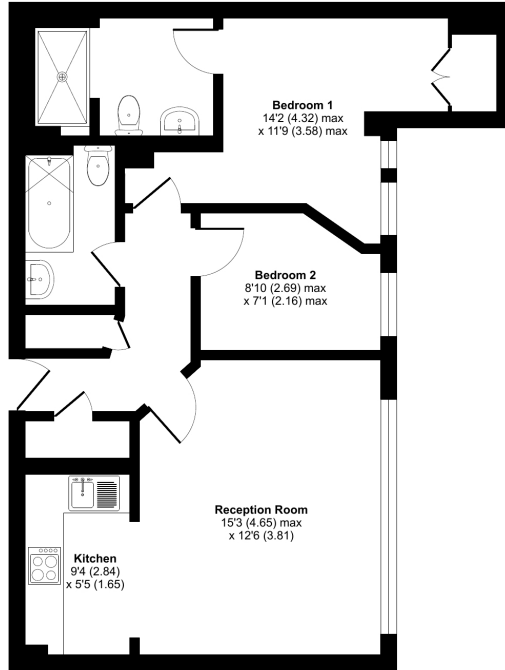


FLOORPLAN

Newington Causeway, London, SE1

Approximate Area = 635 sq ft / 59 sq m

For identification only - Not to scale



LOWER GROUND FLOOR



Floor plan produced in accordance with RICS Property Measurement Standards incorporating International Property Measurement Standards (IPMS2 Residential). © richreom 2023. Produced for Davis & Gibbs. REF: 1012190.

EPC

