



24 Billers Chase, Springfield, Chelmsford, Essex. CM1 6BD

- SUPERB FIVE BEDROOM DETACHED
- SOUGHT AFTER DEVELOPMENT
- GAS CENTRAL HEATING
- DOUBLE GLAZED WINDOWS
- DOUBLE LENGTH GARAGE AND PARKING
- VIEWING ADVISED



PROPERTY DESCRIPTION

A SUPERB FIVE BEDROOM DETACHED FAMILY HOME LOCATED ON THE POPULAR BEAULIEU PARK DEVELOPMENT. THE ACCOMMODATION WHICH IS SPREAD OVER THREE FLOORS COMPRISES OF AN ENTRANCE HALL, FAMILY ROOM/STUDY, LIVING ROOM, KITCHEN/DINER, UTILITY ROOM, CLOAKROOM AND DINING ROOM TO THE GROUND FLOOR. THE FIRST FLOOR COMPRISES OF THE MASTER BEDROOM WITH EN-SUITE, BEDROOM TWO AND FIVE WITH ACCESS TO A JACK AND JILL EN-SUITE, THE SECOND FLOOR COMPRISES OF BEDROOMS THREE AND FOUR AND ALSO FAMILY BATHROOM. THE PROPERTY FURTHER BENEFITS FROM GAS CENTRAL HEATING, DOUBLE GLAZING, DRIVEWAY PROVIDING OFF ROAD PARKING, DOUBLE LENGTH GARAGE AND A PLEASANT REAR GARDEN.



ROOM DESCRIPTIONS

Property Information (WITH APPROXIMATE ROOM SIZES)

Entrance Hall

Family Room/Study
13'8" x 10'3"

Living Room
19'8" x 10'9"

Kitchen/Diner
16'3" x 15'2"

Utility Room
8'1" x 6'4"

Cloakroom

Dining Room
15'8" x 9'6"

First Floor Landing

Master Suite
22'8" x 10'9" door to;
En Suite

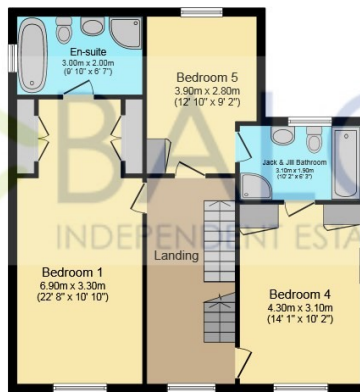
Bedroom Two
13'8" x 10'3" door to;
Jack and Jill En Suite



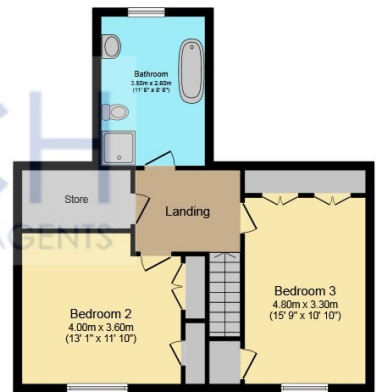
FLOORPLAN



Ground Floor



First Floor



Second Floor