



# The Causeway

Bassingbourn, Royston,  
Cambridgeshire, SG8 5LG  
£500,000

country  
properties

This contemporary detached bungalow is superbly positioned close to local amenities in one of South Cambridgeshire's most desirable and charming villages.

Designed with warmth and modern living in mind, this turnkey home offers generous, well-planned accommodation—ideal for anyone seeking a property ready to move straight into.

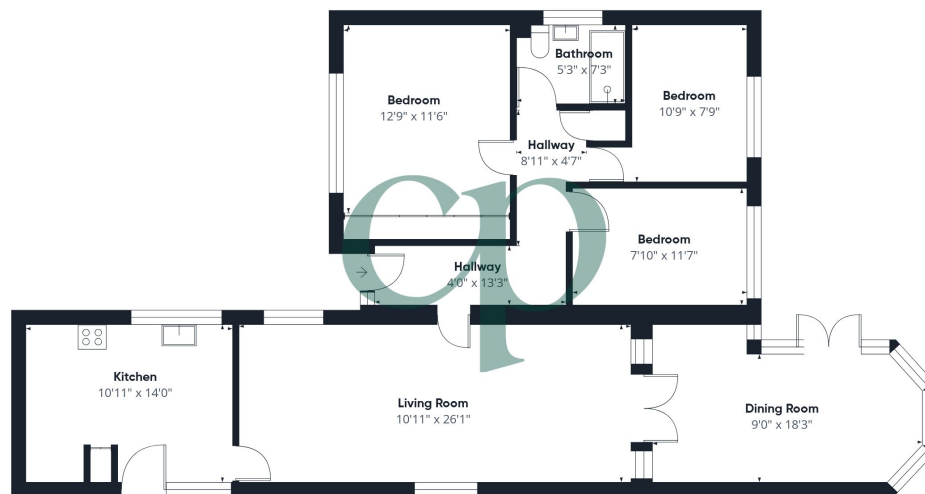
Further benefits include ample off-street parking alongside a double garage, making this an excellent opportunity that truly must be viewed to be fully appreciated.

- Detached Bungalow
- Heart of the Village and close to amenities
- Three Double Bedrooms
- Kitchen/Breakfast Room
- Double Garage and ample parking
- Finished to a high standard throughout
- South Facing Garden
- Large Living Space
- Freehold









Floor 0 Building 1



Floor 0 Building 2

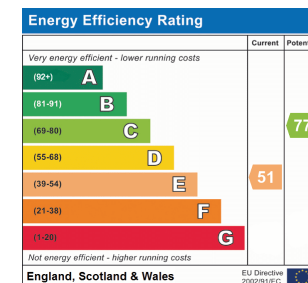


Approximate total area<sup>(1)</sup>  
1398 ft<sup>2</sup>

(1) Excluding balconies and terraces

Calculations reference the RICS IPMS 3C standard. Measurements are approximate and not to scale. This floor plan is intended for illustration only.

GIRAFFE360



All measurements are approximate and quoted in metric with imperial equivalents and for general guidance only and whilst every attempt has been made to ensure accuracy, they must not be relied on. The fixtures, fittings and appliances referred to have not been tested and therefore no guarantee can be given and that they are in working order. Internal photographs are reproduced for general information and it must not be inferred that any item shown is included with the property. For a free valuation, contact the numbers listed on the brochure

## Viewing by appointment only

Country Properties | 45, High Street | SG8 9AW

T: 01763 245121 | E: royston@country-properties.co.uk

[www.country-properties.co.uk](http://www.country-properties.co.uk)

country  
properties

country  
properties