



1 Sandown House, 124 High Street, Staines-Upon-Thames, Surrey, TW18 4EY

STUNNING TWO BEDROOM, TWO BATHROOM APARTMENT IN SOUGHT AFTER NEWLY CONSTRUCTED DEVELOPMENT IDEALLY LOCATED FOR TOWN CENTRE & MAINLINE TRAIN STATION BENEFITTING FROM A 24-HOUR CONCIERGE & ON-SITE RESIDENTS GYM. The property benefits from a spacious lounge/diner with large private balcony open to luxury fitted kitchen with fully integrated appliances, two large double bedrooms (en-suite shower room to Bed 1), further luxury bathroom suite and secure allocated parking. No Onward Chain. Viewings Highly Recommended!

ROOM DESCRIPTIONS

Concierge

With security-entry doors leading to communal hallway with lift and stairs to first floor.



Entrance Hall

Accessed via hard wood front door, recessed downlighters, power points, Amtico flooring with underfloor heating, large built-in utility cupboard with space for washing machine & heating and electric controls. Further large built-in storage cupboard with hanging rails. Doors to:

Lounge/Diner

Large double glazed sliding patio doors to private balcony, Amtico flooring with underfloor heating, recessed downlighters, power points.



ROOM DESCRIPTIONS

Kitchen

Luxury gloss-slab fitted units at eye and base level with solid worktops, built-in oven and hob with extractor over, sink drainer with mixer tap, integrated fridge/freezer and dishwasher.



Bedroom 1

Double glazed window, light and power points.

Door to:



En-suite Shower Room

Fully tiled double-shower cubicle, wash hand basin and W.C inset to cabinet, heated towel rail, mirror.



Bedroom 2

Double glazed window, light and power points.



Bathroom

Panel enclosed bath with shower over, wash hand basin and W.C. inset to cabinet, heated towel rail, Amtico flooring, partly tiled walls.

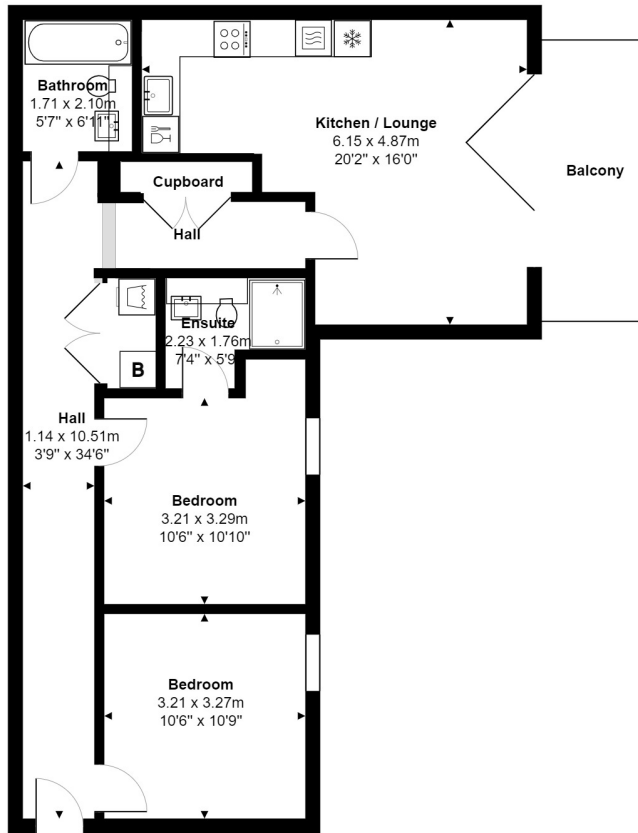


Parking

1 Allocated Parking Bay within Basement Carpark.

FLOORPLAN

1ST FLOOR APARTMENT



Total Area: 73.9 m² ... 795 ft²

All measurements are approximate and for display purposes only.

127a, High Street, Staines-upon-Thames, TW18 4PD

01784 451458

staines@gregory-brown.co.uk