

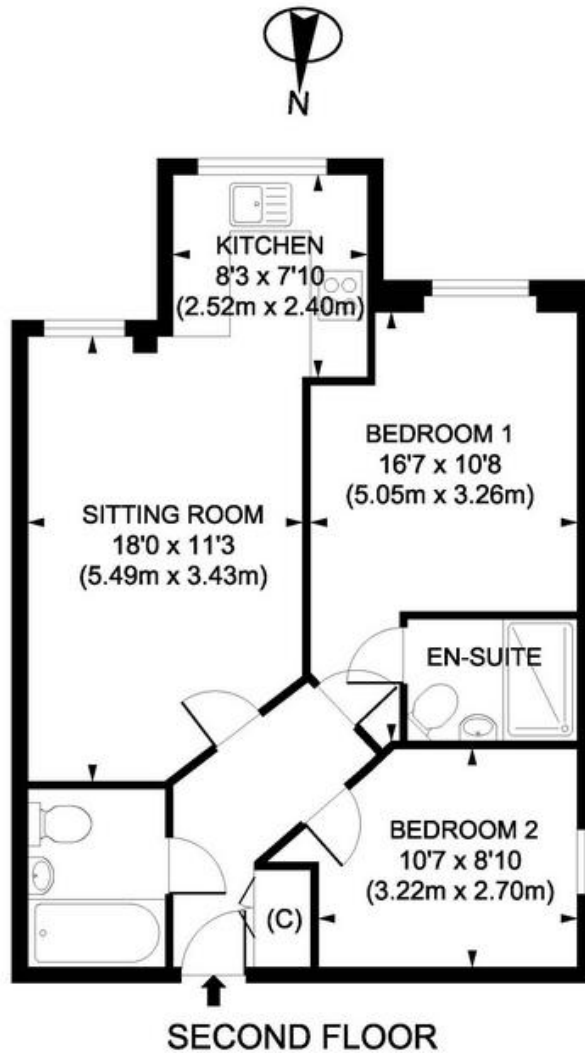


Hooper Court, Gresham Road STAINES-UPON- THAMES, TW18 2AU

MODERN TWO BEDROOM, TWO BATHROOM APARTMENT WITHIN GATED DEVELOPMENT IDEALLY LOCATED WITHIN MOMENTS OF STAINES TOWN CENTRE & MAINLINE TRAIN STATION. The property benefits from a spacious lounge/diner, modern fitted kitchen, two double bedrooms (en-suite to master), further luxury bathroom and TWO GATED PARKING spaces. Unfurnished. Available 8th June. Viewings Highly Recommended!

ROOM DESCRIPTIONS

FLOORPLAN



Gresham Road, TW18

Gross Internal Area 635 sq ft 59 sq metres

Property360. co.uk 2009

REF : HIP009315